

The Arkansas 1st Congressional District

Table 1. The Arkansas 1st Congressional District Description

Area (square miles)	17,151
Navigable Waterbody (square miles)	594
Total Population (2007)	674,797
Population Density (per square mile) (2007)	39
Persons 18+ (2007)	514,010
Number of Households (2007)	270,329

Table 2. Registered Boats Owned by Residents Residing in the Arkansas 1st Congressional District

	1st CD	State Total
Number of Registered Boats	49,475	184,148
Type of Registered Boats		
Power Boats	46,314	169,644
Outboards	41,547	148,572
Inboards	936	3,724
Stern Drives	3,647	16,534
Jet Boats	184	814
Personal Watercraft	2,886	12,882
Sailboats	275	1,622
Size of Registered Boats		
≤ 15'	25,006	83,447
16'-24'	22,566	93,714
25'-39'	1,781	6,077
40' +	122	910
Per Capita Ownership of Registered Boats		
All Population	73/1000	65/1000
Persons 18 +	96/1000	88/1000
Households	183/1000	161/1000

Table 3. Boating-related Businesses Based on NAICS Codes

Category	1st CD	State Total
Boat Building		
No. of Businesses	1	13
No. of Employees	-	926
Total Sales (\$ Millions)	-	\$88.8
Motors & Engines Mfg.		
No. of Businesses	-	-
No. of Employees	-	-
Total Sales (\$ Millions)	-	-
Accessories & Supplies Mfg.		
No. of Businesses	4	12
No. of Employees	195	273
Total Sales (\$ Millions)	\$23.9	\$28.1
Dealers & Wholesalers		
No. of Businesses	31	114
No. of Employees	142	471
Total Sales (\$ Millions)	\$43.3	\$120.1
Boating Services		
No. of Businesses	32	83
No. of Employees	90	275
Total Sales (\$ Millions)	\$5.1	\$18.7

Figure 1. Location of the Arkansas 1st Congressional District

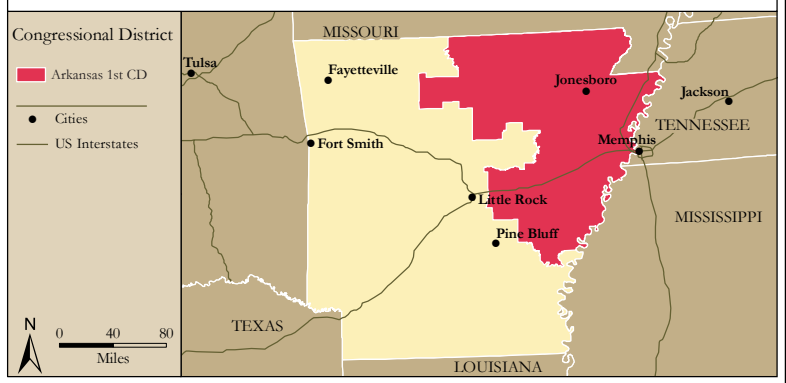


Figure 2. Navigable Waters of the Arkansas 1st Congressional District

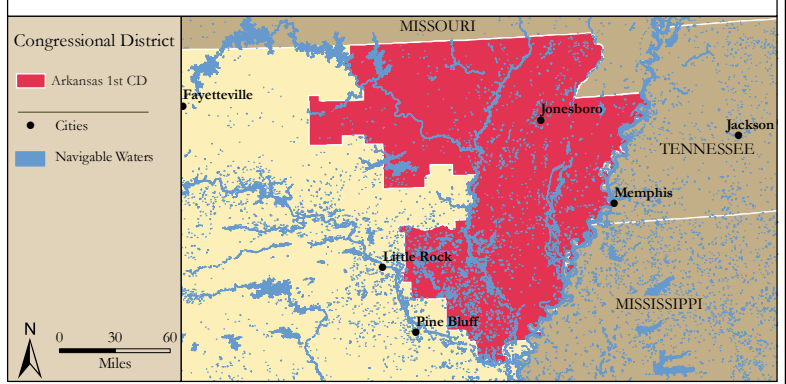


Figure 3. Number of Registered Boats by Zipcode within the Arkansas 1st Congressional District

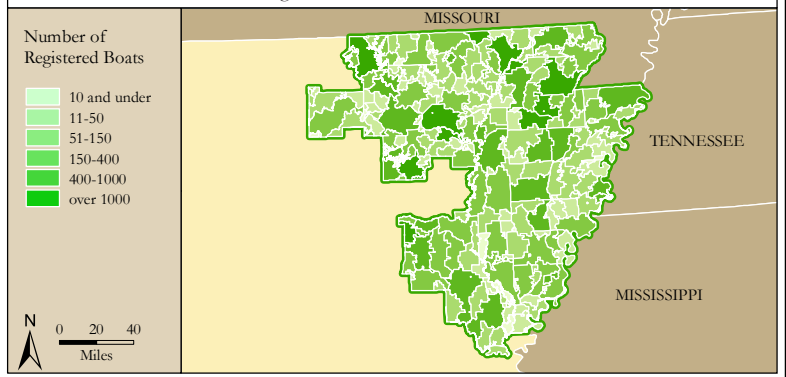
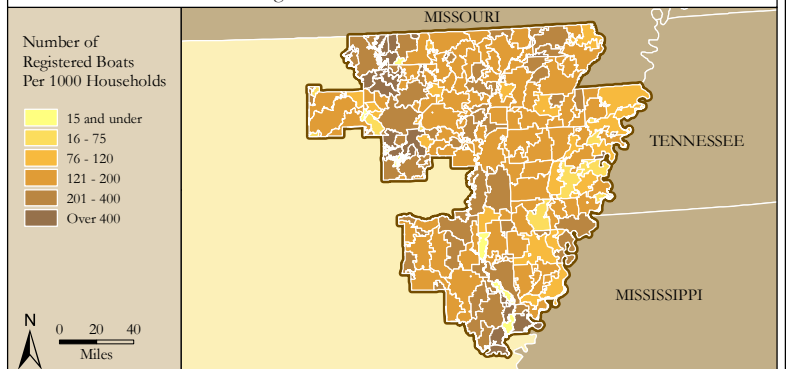


Figure 4. Per Capita (Household) Ownership of Registered Boats by Zipcode within the Arkansas 1st Congressional District



Economic Significance of Boating

Table 1. Craft and Trip Expenses by Power and Sailboats Registered in the Arkansas 1st Congressional District

Category	Boat Type and Size								Total
	Power <15'	Power 16' - 24'	Power 25' - 39'	Power 40'+	Sail <15'	Sail 16' - 24'	Sail 25' - 39'	Sail 40+	
Number of boats (Thousands of boats)	22.1	22.4	1.7	0.1	0.1	0.1	0.1	0.0	46.6
Annual craft spending (\$ per boat per year)	\$457.9	\$1,655.6	\$7,464.6	\$25,299.0	\$488.7	\$1,830.2	\$7,439.8	\$18,328.8	
Total craft spending (\$ Millions)	\$10.1	\$37.1	\$12.8	\$3.0	\$0.0	\$0.3	\$0.5	\$0.1	\$63.9
Total boat days (Thousands of days)	359.2	561.4	52.7	5.1	1.1	2.8	2.0	0.2	984.5
Total trip spending (\$ per boat per year)	\$935.9	\$2,148.4	\$4,574.4	\$8,039.6	\$1,009.7	\$1,009.7	\$1,963.9	\$5,204.7	
Total trip spending (\$ Millions)	\$20.6	\$48.2	\$7.9	\$0.9	\$0.1	\$0.1	\$0.1	\$0.0	\$78.0
Total craft & trip spending (\$ Millions)	\$30.7	\$85.3	\$20.7	\$3.9	\$0.1	\$0.4	\$0.6	\$0.1	\$141.8

Table 2. Total Spending on Boat Trips by Power and Sailboat Owners Registered in the Arkansas 1st CD

Category	Total (\$ Millions)	Percentage
Lodging	\$3.1	4%
Marina services	\$6.3	8%
Restaurant	\$14.1	18%
Groceries	\$14.0	18%
Boat fuel	\$18.0	23%
Auto fuel	\$14.6	19%
Repair & Maintenance	-	-
Marine supplies	-	-
Recreation & Entertainment	\$3.4	4%
Shopping	\$2.5	3%
Other services	-	-
Other goods	\$1.9	2%
Total	\$78.0	100%

Table 3. Total Annual Craft Spending (not including purchases of boats) by Power and Sailboat Owners Registered in the Arkansas 1st CD

Category	Total (\$ Millions)	Percentage
Slip	\$8.5	13%
Loan Payments	\$20.2	32%
Replacement Motors	\$0.9	1%
Replacement Trailers	\$0.2	0%
Insurance	\$5.9	9%
Repairs	\$12.8	20%
Accessories	\$12.6	20%
Taxes	\$2.7	4%
Total	\$63.9	100%

Table 4. Economic Significance of Trip Spending and Annual Craft Spending by Power and Sailboats Registered in the Arkansas 1st CD

	Trip Spending	Annual Craft Spending	Total
Direct Effects			
Sales (\$ Millions)	\$65.8	\$40.2	\$106.0
Jobs	684.7	461.4	1,146.1
Labor Income (\$ Millions)	\$19.7	\$15.6	\$35.3
Value Added (\$ Millions)	\$31.6	\$26.0	\$57.6
Total Effects			
Sales (\$ Millions)	\$176.6	\$101.9	\$278.4
Jobs	1,456.4	916.1	2,372.4
Labor Income (\$ Millions)	\$54.0	\$36.0	\$90.0
Value Added (\$ Millions)	\$91.2	\$60.0	\$151.2

Table 5. Economic Significance of Power and Sailboats Registered in the Arkansas 1st CD

Sector/Spending category	Sales (\$ Millions)	Jobs	Labor Income (\$Millions)	Value Added (\$Millions)
Direct Effects				
Lodging	\$3.1	38.4	\$1.2	\$2.2
Marina Services	\$14.8	190.6	\$5.2	\$9.3
Restaurant	\$14.1	278.7	\$4.8	\$6.8
Recreation & Entertainment	\$3.4	43.2	\$1.2	\$2.1
Repair & Maintenance	\$12.8	159.6	\$4.7	\$6.6
Insurance & Credit	\$7.2	52.6	\$3.1	\$6.6
Gas Service	\$7.3	86.5	\$3.5	\$5.5
Other Retail Trade	\$10.4	194.5	\$5.1	\$8.2
Wholesale Trade	\$6.9	44.4	\$3.0	\$5.3
Other Local Production of Goods	\$26.0	57.7	\$3.5	\$5.0
Total Direct Effects	\$106.0	1,146.1	\$35.3	\$57.6
Secondary Effects	\$172.5	1,226.3	\$54.7	\$93.6
Total Effects	\$278.4	2,372.4	\$90.0	\$151.2

The Arkansas 2nd Congressional District

Table 1. The Arkansas 2nd Congressional District Description

Area (square miles)	5,922
Navigable Waterbody (square miles)	176
Total Population (2007)	708,220
Population Density (per square mile) (2007)	117
Persons 18+ (2007)	536,659
Number of Households (2007)	278,994

Table 2. Registered Boats Owned by Residents Residing in the Arkansas 2nd Congressional District

	2nd CD	State Total
Number of Registered Boats	40,946	184,148
Type of Registered Boats		
Power Boats	37,326	169,644
Outboards	31,712	148,572
Inboards	920	3,724
Stern Drives	4,459	16,534
Jet Boats	235	814
Personal Watercraft	3,174	12,882
Sailboats	446	1,622
Size of Registered Boats		
≤ 15'	19,264	83,447
16'-24'	19,787	93,714
25'-39'	1,569	6,077
40' +	326	910
Per Capita Ownership of Registered Boats		
All Population	58/1000	65/1000
Persons 18 +	76/1000	88/1000
Households	147/1000	161/1000

Table 3. Boating-related Businesses Based on NAICS Codes

Category	2nd CD	State Total
Boat Building		
No. of Businesses	3	13
No. of Employees	25	926
Total Sales (\$ Millions)	\$5.8	\$88.8
Motors & Engines Mfg.		
No. of Businesses	-	-
No. of Employees	-	-
Total Sales (\$ Millions)	-	-
Accessories & Supplies Mfg.		
No. of Businesses	3	12
No. of Employees	23	273
Total Sales (\$ Millions)	\$0.9	\$28.1
Dealers & Wholesalers		
No. of Businesses	27	114
No. of Employees	82	471
Total Sales (\$ Millions)	\$16.7	\$120.1
Boating Services		
No. of Businesses	13	83
No. of Employees	29	275
Total Sales (\$ Millions)	\$1.7	\$18.7

Figure 1. Location of the Arkansas 2nd Congressional District

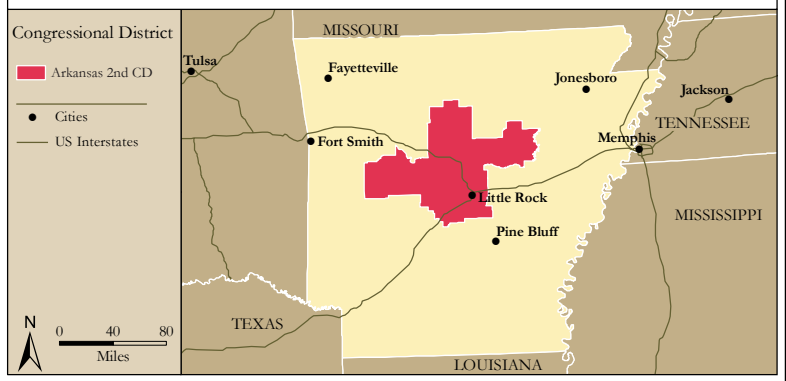


Figure 2. Navigable Waters of the Arkansas 2nd Congressional District

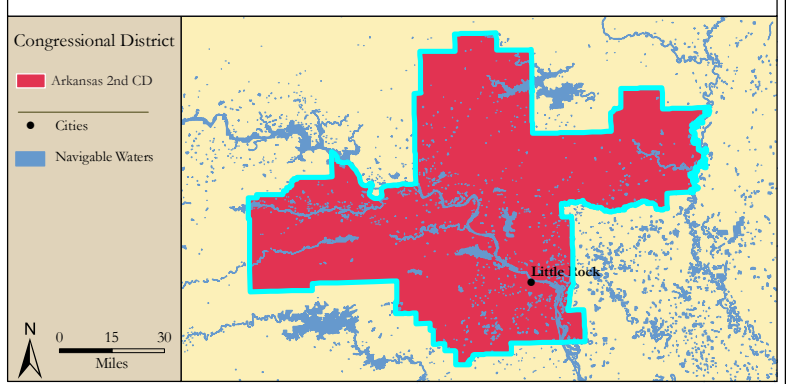


Figure 3. Number of Registered Boats by Zipcode within the Arkansas 2nd Congressional District

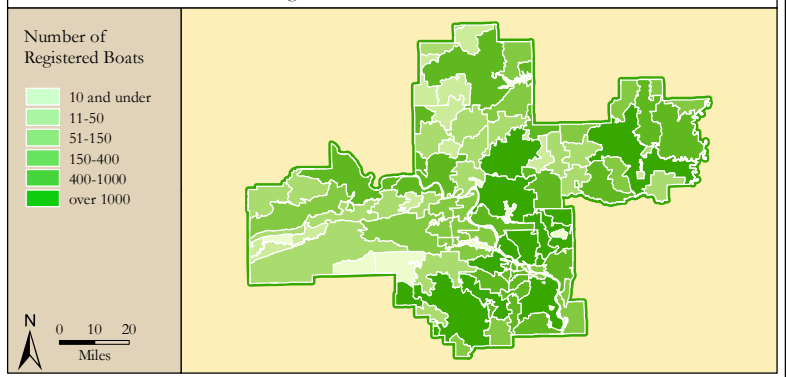
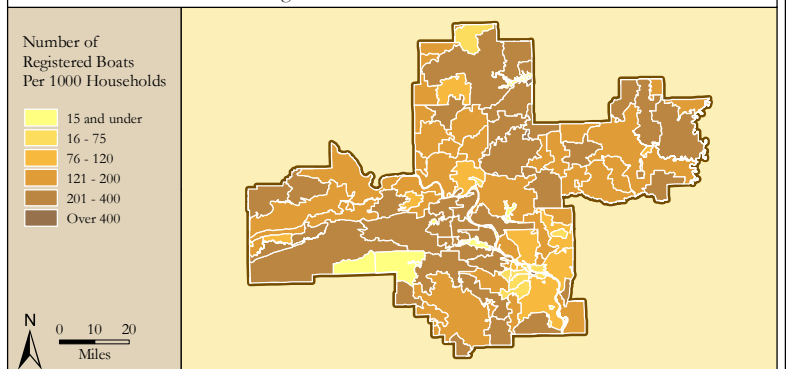


Figure 4. Per Capita (Household) Ownership of Registered Boats by Zipcode within the Arkansas 2nd Congressional District



Economic Significance of Boating

Table 1. Craft and Trip Expenses by Power and Sailboats Registered in the Arkansas 2nd Congressional District

Category	Boat Type and Size								Total
	Power <15'	Power 16' - 24'	Power 25' - 39'	Power 40'+	Sail <15'	Sail 16' - 24'	Sail 25' - 39'	Sail 40+	
Number of boats (Thousands of boats)	16.0	19.6	1.4	0.3	0.1	0.2	0.1	0.0	37.8
Annual craft spending (\$ per boat per year)	\$457.9	\$1,655.6	\$7,464.6	\$25,299.0	\$488.7	\$1,830.2	\$7,439.8	\$18,328.8	
Total craft spending (\$ Millions)	\$7.3	\$32.4	\$10.7	\$8.1	\$0.0	\$0.4	\$1.0	\$0.1	\$60.1
Total boat days (Thousands of days)	260.4	490.4	43.9	13.9	1.9	3.9	4.4	0.3	819.0
Total trip spending (\$ per boat per year)	\$935.9	\$2,148.4	\$4,574.4	\$8,039.6	\$1,009.7	\$1,009.7	\$1,963.9	\$5,204.7	
Total trip spending (\$ Millions)	\$15.0	\$42.1	\$6.5	\$2.6	\$0.1	\$0.2	\$0.3	\$0.0	\$66.8
Total craft & trip spending (\$ Millions)	\$22.3	\$74.5	\$17.2	\$10.6	\$0.1	\$0.6	\$1.3	\$0.2	\$126.8

Table 2. Total Spending on Boat Trips by Power and Sailboat Owners Registered in the Arkansas 2nd CD

Category	Total (\$ Millions)	Percentage
Lodging	\$2.6	4%
Marina services	\$5.5	8%
Restaurant	\$12.1	18%
Groceries	\$12.1	18%
Boat fuel	\$15.7	23%
Auto fuel	\$12.2	18%
Repair & Maintenance	-	-
Marine supplies	-	-
Recreation & Entertainment	\$2.8	4%
Shopping	\$2.1	3%
Other services	-	-
Other goods	\$1.6	2%
Total	\$66.8	100%

Table 3. Total Annual Craft Spending (not including purchases of boats) by Power and Sailboat Owners Registered in the Arkansas 2nd CD

Category	Total (\$ Millions)	Percentage
Slip	\$8.3	14%
Loan Payments	\$19.4	32%
Replacement Motors	\$0.8	1%
Replacement Trailers	\$0.2	0%
Insurance	\$5.5	9%
Repairs	\$11.9	20%
Accessories	\$11.4	19%
Taxes	\$2.6	4%
Total	\$60.1	100%

Table 4. Economic Significance of Trip Spending and Annual Craft Spending by Power and Sailboats Registered in the Arkansas 2nd CD

	Trip Spending	Annual Craft Spending	Total
Direct Effects			
Sales (\$ Millions)	\$56.5	\$37.5	\$94.0
Jobs	587.5	431.4	1,018.9
Labor Income (\$ Millions)	\$16.9	\$14.5	\$31.4
Value Added (\$ Millions)	\$27.1	\$24.3	\$51.4
Total Effects			
Sales (\$ Millions)	\$151.8	\$95.1	\$246.8
Jobs	1,250.4	855.8	2,106.1
Labor Income (\$ Millions)	\$46.4	\$33.6	\$79.9
Value Added (\$ Millions)	\$78.3	\$56.0	\$134.3

Table 5. Economic Significance of Power and Sailboats Registered in the Arkansas 2nd CD

Sector/Spending category	Sales (\$ Millions)	Jobs	Labor Income (\$Millions)	Value Added (\$Millions)
Direct Effects				
Lodging	\$2.6	32.6	\$1.0	\$1.9
Marina Services	\$13.8	177.8	\$4.8	\$8.7
Restaurant	\$12.1	240.1	\$4.1	\$5.8
Recreation & Entertainment	\$2.8	36.2	\$1.0	\$1.8
Repair & Maintenance	\$11.9	148.9	\$4.4	\$6.2
Insurance & Credit	\$6.8	49.0	\$2.9	\$6.2
Gas Service	\$6.2	73.9	\$3.0	\$4.7
Other Retail Trade	\$9.2	171.7	\$4.5	\$7.2
Wholesale Trade	\$6.0	38.7	\$2.6	\$4.6
Other Local Production of Goods	\$22.6	50.3	\$3.1	\$4.3
Total Direct Effects	\$94.0	1,018.9	\$31.4	\$51.4
Secondary Effects	\$152.8	1,087.2	\$48.5	\$82.9
Total Effects	\$246.8	2,106.1	\$79.9	\$134.3

The Arkansas 3rd Congressional District

Table 1. The Arkansas 3rd Congressional District Description

Area (square miles)	8,490
Navigable Waterbody (square miles)	175
Total Population (2007)	770,621
Population Density (per square mile) (2007)	89
Persons 18+ (2007)	578,992
Number of Households (2007)	290,092

Table 2. Registered Boats Owned by Residents Residing in the Arkansas 3rd Congressional District

	3rd CD	State Total
Number of Registered Boats	41,650	184,148
Type of Registered Boats		
Power Boats	37,507	169,644
Outboards	31,651	148,572
Inboards	1,068	3,724
Stern Drives	4,562	16,534
Jet Boats	226	814
Personal Watercraft	3,557	12,882
Sailboats	586	1,622
Size of Registered Boats		
≤ 15'	14,076	83,447
16'-24'	26,094	93,714
25'-39'	1,304	6,077
40' +	176	910
Per Capita Ownership of Registered Boats		
All Population	54/1000	65/1000
Persons 18 +	72/1000	88/1000
Households	144/1000	161/1000

Table 3. Boating-related Businesses Based on NAICS Codes

Category	3rd CD	State Total
Boat Building		
No. of Businesses	8	13
No. of Employees	866	926
Total Sales (\$ Millions)	\$80.8	\$88.8
Motors & Engines Mfg.		
No. of Businesses	-	-
No. of Employees	-	-
Total Sales (\$ Millions)	-	-
Accessories & Supplies Mfg.		
No. of Businesses	2	12
No. of Employees	25	273
Total Sales (\$ Millions)	\$1.7	\$28.1
Dealers & Wholesalers		
No. of Businesses	31	114
No. of Employees	99	471
Total Sales (\$ Millions)	\$16.4	\$120.1
Boating Services		
No. of Businesses	19	83
No. of Employees	44	275
Total Sales (\$ Millions)	\$2.5	\$18.7

Figure 1. Location of the Arkansas 3rd Congressional District

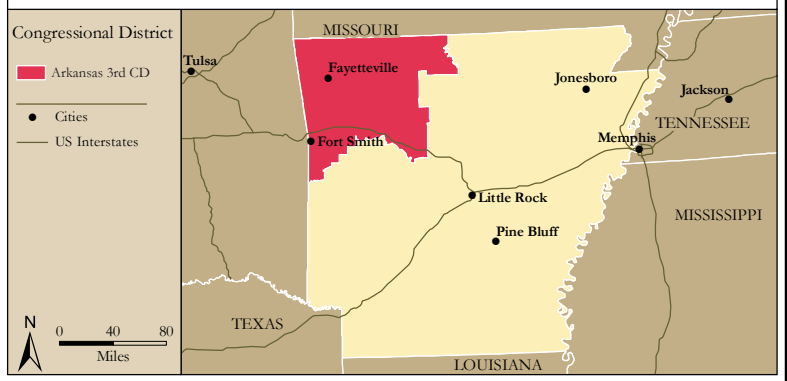


Figure 2. Navigable Waters of the Arkansas 3rd Congressional District

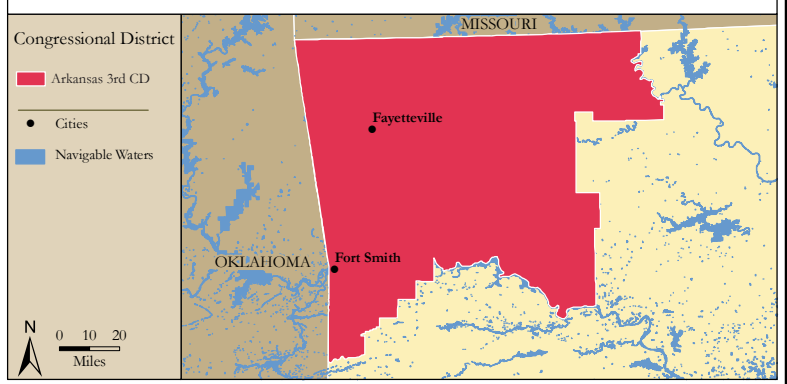


Figure 3. Number of Registered Boats by Zipcode within the Arkansas 3rd Congressional District

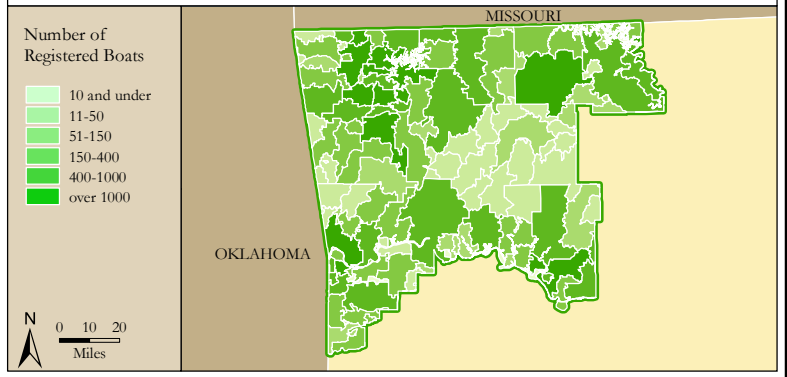
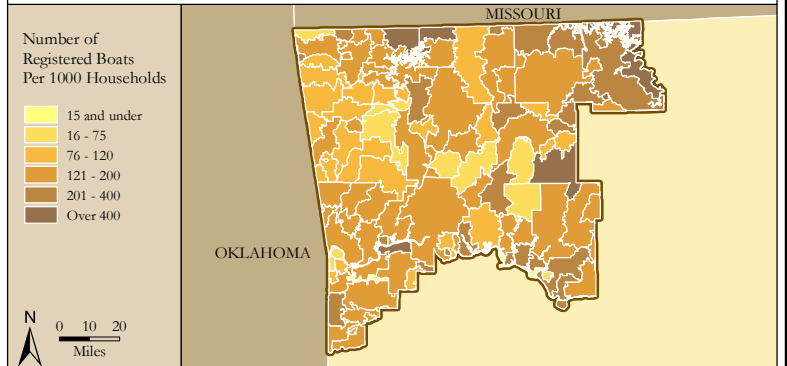


Figure 4. Per Capita (Household) Ownership of Registered Boats by Zipcode within the Arkansas 3rd Congressional District



Economic Significance of Boating

Table 1. Craft and Trip Expenses by Power and Sailboats Registered in the Arkansas 3rd Congressional District

Category	Boat Type and Size								Total
	Power <15'	Power 16' - 24'	Power 25' - 39'	Power 40'+	Sail <15'	Sail 16' - 24'	Sail 25' - 39'	Sail 40+	
Number of boats (Thousands of boats)	10.4	25.8	1.1	0.2	0.2	0.3	0.2	0.0	38.1
Annual craft spending (\$ per boat per year)	\$457.9	\$1,655.6	\$7,464.6	\$25,299.0	\$488.7	\$1,830.2	\$7,439.8	\$18,328.8	
Total craft spending (\$ Millions)	\$4.7	\$42.8	\$8.6	\$4.2	\$0.1	\$0.5	\$1.2	\$0.2	\$62.2
Total boat days (Thousands of days)	168.8	646.6	35.2	7.3	2.9	5.3	4.9	0.4	871.3
Total trip spending (\$ per boat per year)	\$935.9	\$2,148.4	\$4,574.4	\$8,039.6	\$1,009.7	\$1,009.7	\$1,963.9	\$5,204.7	
Total trip spending (\$ Millions)	\$9.7	\$55.5	\$5.3	\$1.3	\$0.2	\$0.3	\$0.3	\$0.0	\$72.6
Total craft & trip spending (\$ Millions)	\$14.5	\$98.2	\$13.8	\$5.6	\$0.2	\$0.8	\$1.5	\$0.2	\$134.7

Table 2. Total Spending on Boat Trips by Power and Sailboat Owners Registered in the Arkansas 3rd CD

Category	Total (\$ Millions)	Percentage
Lodging	\$3.1	4%
Marina services	\$5.6	8%
Restaurant	\$13.1	18%
Groceries	\$13.4	18%
Boat fuel	\$16.9	23%
Auto fuel	\$13.6	19%
Repair & Maintenance	-	-
Marine supplies	-	-
Recreation & Entertainment	\$3.0	4%
Shopping	\$2.1	3%
Other services	-	-
Other goods	\$1.8	3%
Total	\$72.6	100%

Table 3. Total Annual Craft Spending (not including purchases of boats) by Power and Sailboat Owners Registered in the Arkansas 3rd CD

Category	Total (\$ Millions)	Percentage
Slip	\$8.4	14%
Loan Payments	\$20.2	33%
Replacement Motors	\$0.9	1%
Replacement Trailers	\$0.2	0%
Insurance	\$5.7	9%
Repairs	\$12.3	20%
Accessories	\$11.9	19%
Taxes	\$2.6	4%
Total	\$62.2	100%

Table 4. Economic Significance of Trip Spending and Annual Craft Spending by Power and Sailboats Registered in the Arkansas 3rd CD

	Trip Spending	Annual Craft Spending	Total
Direct Effects			
Sales (\$ Millions)	\$61.2	\$38.7	\$99.9
Jobs	634.8	444.4	1,079.1
Labor Income (\$ Millions)	\$18.3	\$15.0	\$33.3
Value Added (\$ Millions)	\$29.4	\$25.1	\$54.4
Total Effects			
Sales (\$ Millions)	\$164.4	\$98.0	\$262.5
Jobs	1,352.9	882.0	2,234.9
Labor Income (\$ Millions)	\$50.3	\$34.6	\$84.9
Value Added (\$ Millions)	\$84.9	\$57.8	\$142.6

Table 5. Economic Significance of Power and Sailboats Registered in the Arkansas 3rd CD

Sector/Spending category	Sales (\$ Millions)	Jobs	Labor Income (\$Millions)	Value Added (\$Millions)
Direct Effects				
Lodging	\$3.1	38.3	\$1.2	\$2.2
Marina Services	\$14.0	180.0	\$4.9	\$8.8
Restaurant	\$13.1	259.1	\$4.4	\$6.3
Recreation & Entertainment	\$3.0	38.1	\$1.0	\$1.9
Repair & Maintenance	\$12.3	153.8	\$4.6	\$6.4
Insurance & Credit	\$7.0	50.8	\$3.0	\$6.4
Gas Service	\$6.8	80.7	\$3.3	\$5.2
Other Retail Trade	\$9.8	182.5	\$4.7	\$7.7
Wholesale Trade	\$6.5	41.6	\$2.8	\$4.9
Other Local Production of Goods	\$24.4	54.3	\$3.3	\$4.7
Total Direct Effects	\$99.9	1,079.1	\$33.3	\$54.4
Secondary Effects	\$162.5	1,155.8	\$51.6	\$88.2
Total Effects	\$262.5	2,234.9	\$84.9	\$142.6

The Arkansas 4th Congressional District

Table 1. The Arkansas 4th Congressional District Description

Area (square miles)	20,505
Navigable Waterbody (square miles)	615
Total Population (2007)	665,776
Population Density (per square mile) (2007)	32
Persons 18+ (2007)	511,180
Number of Households (2007)	265,212

Table 2. Registered Boats Owned by Residents Residing in the Arkansas 4th Congressional District

	4th CD	State Total
Number of Registered Boats	51,969	184,148
Type of Registered Boats		
Power Boats	48,397	169,644
Outboards	43,571	148,572
Inboards	799	3,724
Stern Drives	3,858	16,534
Jet Boats	169	814
Personal Watercraft	3,257	12,882
Sailboats	315	1,622
Size of Registered Boats		
≤ 15'	25,037	83,447
16'-24'	25,226	93,714
25'-39'	1,422	6,077
40' +	284	910
Per Capita Ownership of Registered Boats		
All Population	78/1000	65/1000
Persons 18 +	102/1000	88/1000
Households	196/1000	161/1000

Table 3. Boating-related Businesses Based on NAICS Codes

Category	4th CD	State Total
Boat Building		
No. of Businesses	1	13
No. of Employees	35	926
Total Sales (\$ Millions)	\$2.2	\$88.8
Motors & Engines Mfg.		
No. of Businesses	-	-
No. of Employees	-	-
Total Sales (\$ Millions)	-	-
Accessories & Supplies Mfg.		
No. of Businesses	3	12
No. of Employees	30	273
Total Sales (\$ Millions)	\$1.6	\$28.1
Dealers & Wholesalers		
No. of Businesses	25	114
No. of Employees	150	471
Total Sales (\$ Millions)	\$43.9	\$120.1
Boating Services		
No. of Businesses	21	83
No. of Employees	116	275
Total Sales (\$ Millions)	\$9.6	\$18.7

Figure 1. Location of the Arkansas 4th Congressional District

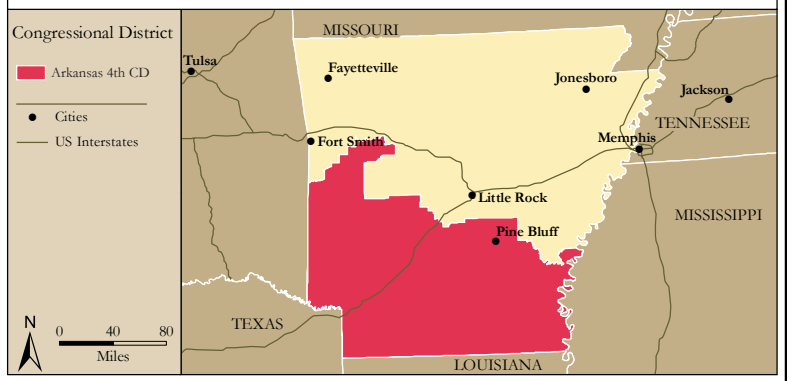


Figure 2. Navigable Waters of the Arkansas 4th Congressional District

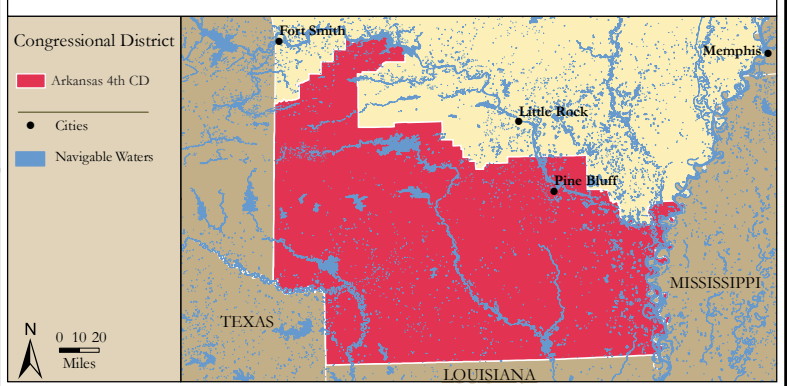


Figure 3. Number of Registered Boats by Zipcode within the Arkansas 4th Congressional District

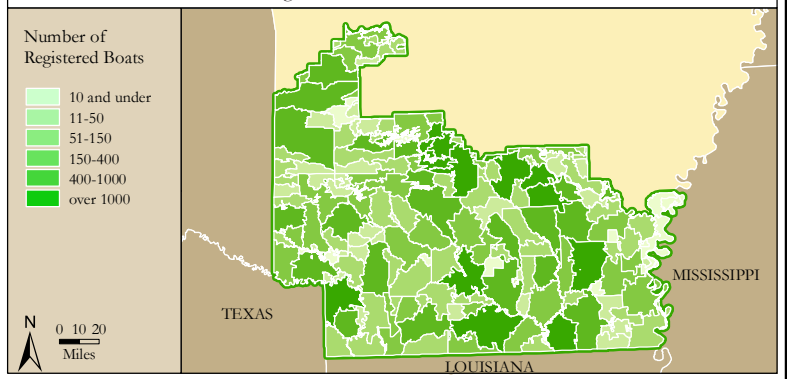
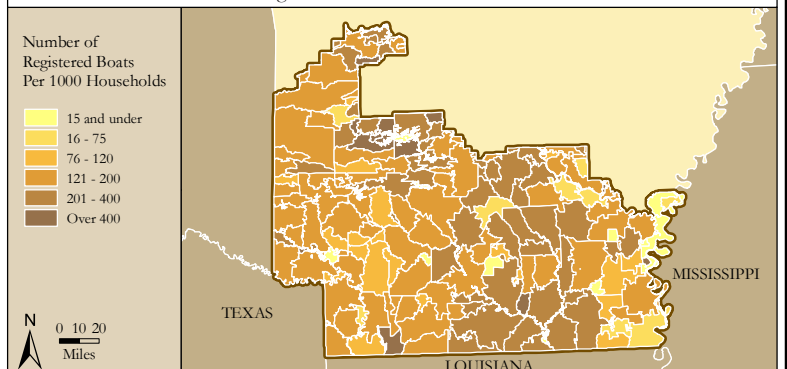


Figure 4. Per Capita (Household) Ownership of Registered Boats by Zipcode within the Arkansas 4th Congressional District



Economic Significance of Boating

Table 1. Craft and Trip Expenses by Power and Sailboats Registered in the Arkansas 4th Congressional District

Category	Boat Type and Size								Total
	Power <15'	Power 16' - 24'	Power 25' - 39'	Power 40'+	Sail <15'	Sail 16' - 24'	Sail 25' - 39'	Sail 40+	
Number of boats (Thousands of boats)	21.7	25.1	1.4	0.3	0.1	0.2	0.1	0.0	48.7
Annual craft spending (\$ per boat per year)	\$457.9	\$1,655.6	\$7,464.6	\$25,299.0	\$488.7	\$1,830.2	\$7,439.8	\$18,328.8	
Total craft spending (\$ Millions)	\$9.9	\$41.5	\$10.1	\$7.1	\$0.0	\$0.3	\$0.5	\$0.1	\$69.5
Total boat days (Thousands of days)	353.4	627.3	41.7	12.2	1.5	3.3	2.0	0.1	1,041.5
Total trip spending (\$ per boat per year)	\$935.9	\$2,148.4	\$4,574.4	\$8,039.6	\$1,009.7	\$1,009.7	\$1,963.9	\$5,204.7	
Total trip spending (\$ Millions)	\$20.3	\$53.8	\$6.2	\$2.3	\$0.1	\$0.2	\$0.1	\$0.0	\$83.0
Total craft & trip spending (\$ Millions)	\$30.3	\$95.3	\$16.4	\$9.4	\$0.1	\$0.5	\$0.6	\$0.1	\$152.5

Table 2. Total Spending on Boat Trips by Power and Sailboat Owners Registered in the Arkansas 4th CD

Category	Total (\$ Millions)	Percentage
Lodging	\$3.3	4%
Marina services	\$6.7	8%
Restaurant	\$14.9	18%
Groceries	\$15.1	18%
Boat fuel	\$19.1	23%
Auto fuel	\$15.6	19%
Repair & Maintenance	-	-
Marine supplies	-	-
Recreation & Entertainment	\$3.6	4%
Shopping	\$2.6	3%
Other services	-	-
Other goods	\$2.1	2%
Total	\$83.0	100%

Table 3. Total Annual Craft Spending (not including purchases of boats) by Power and Sailboat Owners Registered in the Arkansas 4th CD

Category	Total (\$ Millions)	Percentage
Slip	\$9.2	13%
Loan Payments	\$22.2	32%
Replacement Motors	\$1.0	1%
Replacement Trailers	\$0.2	0%
Insurance	\$6.5	9%
Repairs	\$13.8	20%
Accessories	\$13.6	20%
Taxes	\$3.0	4%
Total	\$69.5	100%

Table 4. Economic Significance of Trip Spending and Annual Craft Spending by Power and Sailboats Registered in the Arkansas 4th CD

	Trip Spending	Annual Craft Spending	Total
Direct Effects			
Sales (\$ Millions)	\$70.0	\$43.6	\$113.5
Jobs	728.6	499.8	1,228.4
Labor Income (\$ Millions)	\$21.0	\$16.9	\$37.9
Value Added (\$ Millions)	\$33.7	\$28.2	\$61.9
Total Effects			
Sales (\$ Millions)	\$187.9	\$110.3	\$298.3
Jobs	1,550.1	992.2	2,542.3
Labor Income (\$ Millions)	\$57.5	\$39.0	\$96.5
Value Added (\$ Millions)	\$97.1	\$65.0	\$162.1

Table 5. Economic Significance of Power and Sailboats Registered in the Arkansas 4th CD

Sector/Spending category	Sales (\$ Millions)	Jobs	Labor Income (\$Millions)	Value Added (\$Millions)
Direct Effects				
Lodging	\$3.3	41.6	\$1.3	\$2.4
Marina Services	\$15.9	204.6	\$5.6	\$10.0
Restaurant	\$14.9	296.1	\$5.1	\$7.2
Recreation & Entertainment	\$3.6	45.7	\$1.2	\$2.2
Repair & Maintenance	\$13.8	173.0	\$5.1	\$7.2
Insurance & Credit	\$7.9	57.5	\$3.4	\$7.3
Gas Service	\$7.7	92.0	\$3.7	\$5.9
Other Retail Trade	\$11.2	208.7	\$5.4	\$8.8
Wholesale Trade	\$7.4	47.5	\$3.2	\$5.6
Other Local Production of Goods	\$27.7	61.8	\$3.8	\$5.3
Total Direct Effects	\$113.5	1,228.4	\$37.9	\$61.9
Secondary Effects	\$184.7	1,313.9	\$58.6	\$100.2
Total Effects	\$298.3	2,542.3	\$96.5	\$162.1