

The Wisconsin 1st Congressional District

Table 1. The Wisconsin 1st Congressional District Description

Area (square miles)	1,680
Navigable Waterbody (square miles)	77
Total Population (2007)	717,740
Population Density (per square mile) (2007)	417
Persons 18+ (2007)	546,996
Number of Households (2007)	276,138

Table 2. Registered Boats Owned by Residents Residing in the Wisconsin 1st Congressional District

	1st CD	State Total
Number of Registered Boats	56,343	547,788
Type of Registered Boats		
Power Boats	50,118	504,454
Outboards	41,194	438,575
Inboards	1,739	11,164
Stern Drives	6,858	51,848
Jet Boats	327	2,867
Personal Watercraft	4,946	32,688
Sailboats	1,279	10,646
Size of Registered Boats		
≤ 15'	25,431	258,045
16'-24'	29,013	274,243
25'-39'	1,766	14,362
40' +	133	1,138
Per Capita Ownership of Registered Boats		
All Population	79/1000	98/1000
Persons 18 +	103/1000	133/1000
Households	204/1000	243/1000

Table 3. Boating-related Businesses Based on NAICS Codes

Category	1st CD	State Total
Boat Building		
No. of Businesses	3	21
No. of Employees	78	2,190
Total Sales (\$ Millions)	\$7.7	\$305.3
Motors & Engines Mfg.		
No. of Businesses	-	4
No. of Employees	-	224
Total Sales (\$ Millions)	-	\$73.7
Accessories & Supplies Mfg.		
No. of Businesses	3	19
No. of Employees	14	112
Total Sales (\$ Millions)	\$1.0	\$6.9
Dealers & Wholesalers		
No. of Businesses	41	247
No. of Employees	218	1,427
Total Sales (\$ Millions)	\$45.2	\$351.3
Boating Services		
No. of Businesses	39	192
No. of Employees	474	1,306
Total Sales (\$ Millions)	\$8.4	\$65.0

Figure 1. Location of the Wisconsin 1st Congressional District

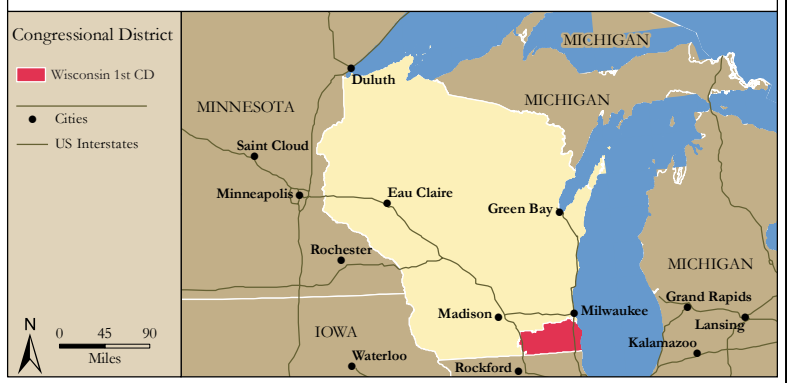


Figure 2. Navigable Waters of the Wisconsin 1st Congressional District

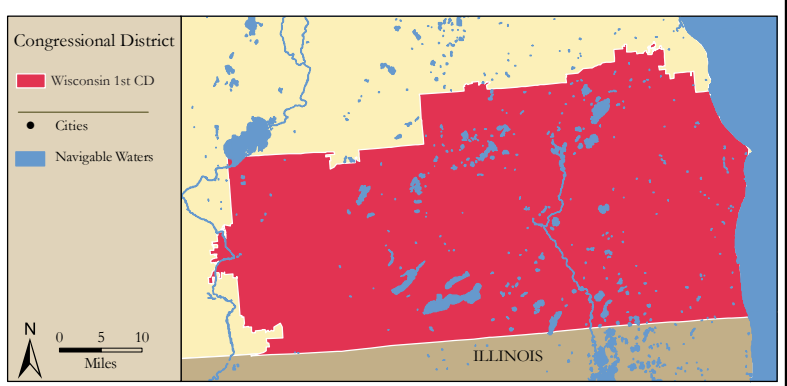


Figure 3. Number of Registered Boats by Zipcode within the Wisconsin 1st Congressional District

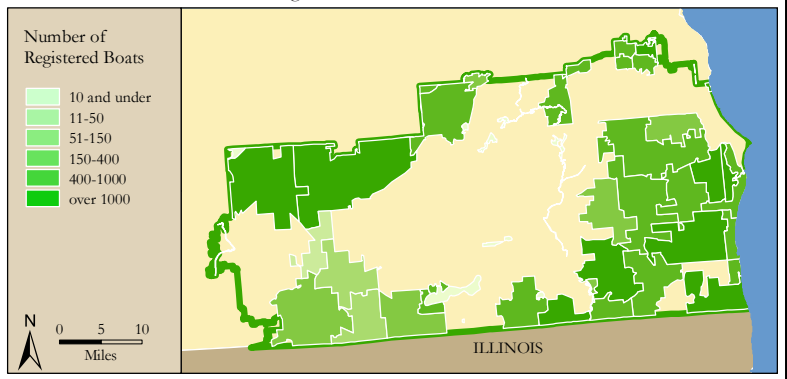
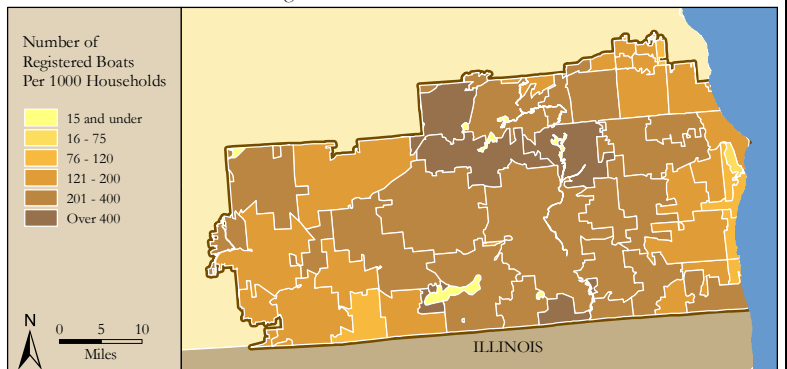


Figure 4. Per Capita (Household) Ownership of Registered Boats by Zipcode within the Wisconsin 1st Congressional District



Economic Significance of Boating

Table 1. Craft and Trip Expenses by Power and Sailboats Registered in the Wisconsin 1st Congressional District

Category	Boat Type and Size								Total
	Power <15'	Power 16' - 24'	Power 25' - 39'	Power 40'+	Sail <15'	Sail 16' - 24'	Sail 25' - 39'	Sail 40+	
Number of boats (Thousands of boats)	20.1	28.5	1.4	0.1	0.4	0.5	0.3	0.0	51.4
Annual craft spending (\$ per boat per year)	\$457.9	\$1,655.6	\$7,464.6	\$25,299.0	\$488.7	\$1,830.2	\$7,439.8	\$18,328.8	
Total craft spending (\$ Millions)	\$9.2	\$47.2	\$10.7	\$2.7	\$0.2	\$0.9	\$2.5	\$0.5	\$73.9
Total boat days (Thousands of days)	326.9	713.7	44.0	4.6	7.9	9.9	10.4	1.3	1,118.6
Total trip spending (\$ per boat per year)	\$935.9	\$2,148.4	\$4,574.4	\$8,039.6	\$1,009.7	\$1,009.7	\$1,963.9	\$5,204.7	
Total trip spending (\$ Millions)	\$18.8	\$61.2	\$6.6	\$0.8	\$0.4	\$0.5	\$0.6	\$0.1	\$89.2
Total craft & trip spending (\$ Millions)	\$28.0	\$108.4	\$17.3	\$3.5	\$0.6	\$1.5	\$3.1	\$0.7	\$163.0

Table 2. Total Spending on Boat Trips by Power and Sailboat Owners Registered in the Wisconsin 1st CD

Category	Total (\$ Millions)	Percentage
Lodging	\$3.7	4%
Marina services	\$7.0	8%
Restaurant	\$16.2	18%
Groceries	\$16.3	18%
Boat fuel	\$20.2	23%
Auto fuel	\$16.9	19%
Repair & Maintenance	-	-
Marine supplies	-	-
Recreation & Entertainment	\$3.8	4%
Shopping	\$2.8	3%
Other services	-	-
Other goods	\$2.3	3%
Total	\$89.2	100%

Table 3. Total Annual Craft Spending (not including purchases of boats) by Power and Sailboat Owners Registered in the Wisconsin 1st CD

Category	Total (\$ Millions)	Percentage
Slip	\$10.1	14%
Loan Payments	\$23.1	31%
Replacement Motors	\$1.1	1%
Replacement Trailers	\$0.3	0%
Insurance	\$6.8	9%
Repairs	\$14.8	20%
Accessories	\$14.6	20%
Taxes	\$3.1	4%
Total	\$73.9	100%

Table 4. Economic Significance of Trip Spending and Annual Craft Spending by Power and Sailboats Registered in the Wisconsin 1st CD

	Trip Spending	Annual Craft Spending	Total
Direct Effects			
Sales (\$ Millions)	\$75.1	\$46.7	\$121.8
Jobs	783.7	537.1	1,320.8
Labor Income (\$ Millions)	\$22.6	\$18.1	\$40.6
Value Added (\$ Millions)	\$36.2	\$30.2	\$66.4
Total Effects			
Sales (\$ Millions)	\$201.8	\$118.4	\$320.2
Jobs	1,666.5	1,065.9	2,732.4
Labor Income (\$ Millions)	\$61.8	\$41.8	\$103.6
Value Added (\$ Millions)	\$104.3	\$69.7	\$174.0

Table 5. Economic Significance of Power and Sailboats Registered in the Wisconsin 1st CD

Sector/Spending category	Sales (\$ Millions)	Jobs	Labor Income (\$Millions)	Value Added (\$Millions)
Direct Effects				
Lodging	\$3.7	45.9	\$1.5	\$2.6
Marina Services	\$17.1	220.2	\$6.0	\$10.8
Restaurant	\$16.2	319.9	\$5.5	\$7.8
Recreation & Entertainment	\$3.8	48.6	\$1.3	\$2.4
Repair & Maintenance	\$14.8	184.9	\$5.5	\$7.7
Insurance & Credit	\$8.3	60.4	\$3.6	\$7.6
Gas Service	\$8.3	98.4	\$4.0	\$6.3
Other Retail Trade	\$12.0	224.8	\$5.8	\$9.4
Wholesale Trade	\$8.0	51.0	\$3.4	\$6.1
Other Local Production of Goods	\$29.7	66.7	\$4.1	\$5.7
Total Direct Effects	\$121.8	1,320.8	\$40.6	\$66.4
Secondary Effects	\$198.4	1,411.6	\$62.9	\$107.6
Total Effects	\$320.2	2,732.4	\$103.6	\$174.0

The Wisconsin 2nd Congressional District

Table 1. The Wisconsin 2nd Congressional District Description

Area (square miles)	3,511
Navigable Waterbody (square miles)	161
Total Population (2007)	727,850
Population Density (per square mile) (2007)	202
Persons 18+ (2007)	568,277
Number of Households (2007)	298,352

Table 2. Registered Boats Owned by Residents Residing in the Wisconsin 2nd Congressional District

	2nd CD	State Total
Number of Registered Boats	51,774	547,788
Type of Registered Boats		
Power Boats	47,187	504,454
Outboards	38,670	438,575
Inboards	1,214	11,164
Stern Drives	7,026	51,848
Jet Boats	277	2,867
Personal Watercraft	3,164	32,688
Sailboats	1,423	10,646
Size of Registered Boats		
≤ 15'	21,986	258,045
16'-24'	28,422	274,243
25'-39'	1,272	14,362
40' +	94	1,138
Per Capita Ownership of Registered Boats		
All Population	71/1000	98/1000
Persons 18 +	91/1000	133/1000
Households	174/1000	243/1000

Table 3. Boating-related Businesses Based on NAICS Codes

Category	2nd CD	State Total
Boat Building		
No. of Businesses	-	21
No. of Employees	-	2,190
Total Sales (\$ Millions)	-	\$305.3
Motors & Engines Mfg.		
No. of Businesses	1	4
No. of Employees	1	224
Total Sales (\$ Millions)	\$0.1	\$73.7
Accessories & Supplies Mfg.		
No. of Businesses	1	19
No. of Employees	-	112
Total Sales (\$ Millions)	-	\$6.9
Dealers & Wholesalers		
No. of Businesses	20	247
No. of Employees	93	1,427
Total Sales (\$ Millions)	\$13.9	\$351.3
Boating Services		
No. of Businesses	8	192
No. of Employees	113	1,306
Total Sales (\$ Millions)	\$2.9	\$65.0

Figure 1. Location of the Wisconsin 2nd Congressional District



Figure 2. Navigable Waters of the Wisconsin 2nd Congressional District

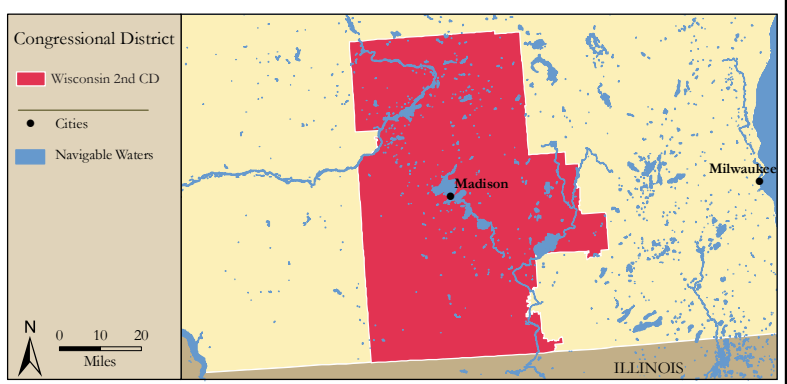


Figure 3. Number of Registered Boats by Zipcode within the Wisconsin 2nd Congressional District

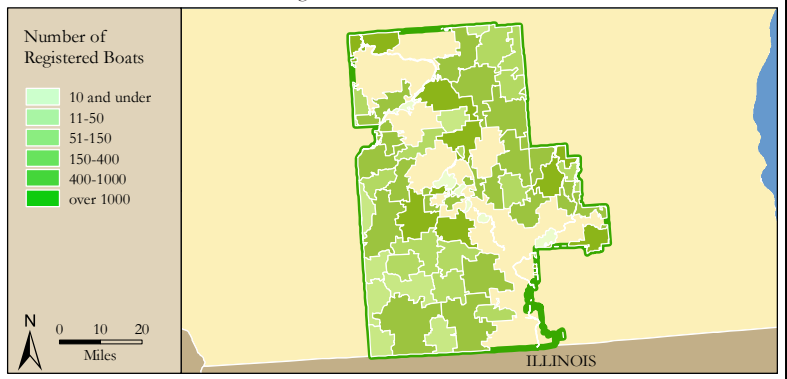
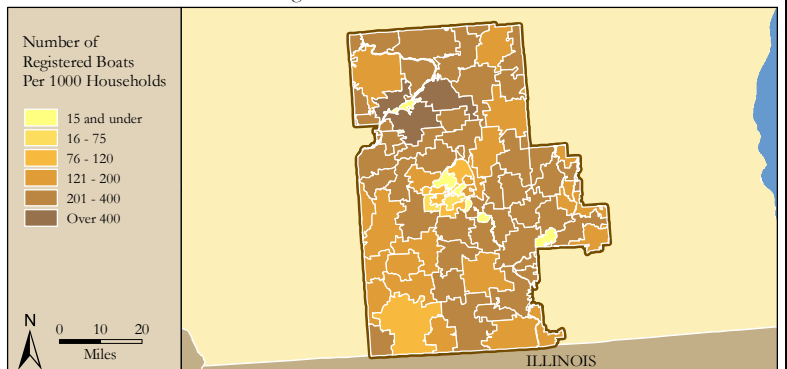


Figure 4. Per Capita (Household) Ownership of Registered Boats by Zipcode within the Wisconsin 2nd Congressional District



Economic Significance of Boating

Table 1. Craft and Trip Expenses by Power and Sailboats Registered in the Wisconsin 2nd Congressional District

Category	Boat Type and Size								Total
	Power <15'	Power 16' - 24'	Power 25' - 39'	Power 40'+	Sail <15'	Sail 16' - 24'	Sail 25' - 39'	Sail 40+	
Number of boats (Thousands of boats)	18.3	27.7	1.1	0.1	0.5	0.7	0.2	0.0	48.6
Annual craft spending (\$ per boat per year)	\$457.9	\$1,655.6	\$7,464.6	\$25,299.0	\$488.7	\$1,830.2	\$7,439.8	\$18,328.8	
Total craft spending (\$ Millions)	\$8.4	\$45.8	\$8.1	\$1.8	\$0.2	\$1.4	\$1.4	\$0.4	\$67.5
Total boat days (Thousands of days)	298.7	693.2	33.3	3.1	9.2	14.3	5.8	1.1	1,058.6
Total trip spending (\$ per boat per year)	\$935.9	\$2,148.4	\$4,574.4	\$8,039.6	\$1,009.7	\$1,009.7	\$1,963.9	\$5,204.7	
Total trip spending (\$ Millions)	\$17.2	\$59.5	\$5.0	\$0.6	\$0.5	\$0.7	\$0.4	\$0.1	\$83.9
Total craft & trip spending (\$ Millions)	\$25.6	\$105.3	\$13.1	\$2.4	\$0.7	\$2.1	\$1.7	\$0.5	\$151.4

Table 2. Total Spending on Boat Trips by Power and Sailboat Owners Registered in the Wisconsin 2nd CD

Category	Total (\$ Millions)	Percentage
Lodging	\$3.5	4%
Marina services	\$6.5	8%
Restaurant	\$15.2	18%
Groceries	\$15.4	18%
Boat fuel	\$18.9	22%
Auto fuel	\$16.1	19%
Repair & Maintenance	-	-
Marine supplies	-	-
Recreation & Entertainment	\$3.6	4%
Shopping	\$2.6	3%
Other services	-	-
Other goods	\$2.1	3%
Total	\$83.9	100%

Table 3. Total Annual Craft Spending (not including purchases of boats) by Power and Sailboat Owners Registered in the Wisconsin 2nd CD

Category	Total (\$ Millions)	Percentage
Slip	\$9.1	13%
Loan Payments	\$21.1	31%
Replacement Motors	\$1.0	1%
Replacement Trailers	\$0.2	0%
Insurance	\$6.3	9%
Repairs	\$13.5	20%
Accessories	\$13.5	20%
Taxes	\$2.9	4%
Total	\$67.5	100%

Table 4. Economic Significance of Trip Spending and Annual Craft Spending by Power and Sailboats Registered in the Wisconsin 2nd CD

	Trip Spending	Annual Craft Spending	Total
Direct Effects			
Sales (\$ Millions)	\$70.5	\$42.7	\$113.3
Jobs	736.7	490.8	1,227.4
Labor Income (\$ Millions)	\$21.2	\$16.5	\$37.8
Value Added (\$ Millions)	\$34.0	\$27.6	\$61.7
Total Effects			
Sales (\$ Millions)	\$189.5	\$108.3	\$297.9
Jobs	1,566.3	974.2	2,540.5
Labor Income (\$ Millions)	\$58.1	\$38.2	\$96.3
Value Added (\$ Millions)	\$98.0	\$63.8	\$161.8

Table 5. Economic Significance of Power and Sailboats Registered in the Wisconsin 2nd CD

Sector/Spending category	Sales (\$ Millions)	Jobs	Labor Income (\$Millions)	Value Added (\$Millions)
Direct Effects				
Lodging	\$3.5	44.0	\$1.4	\$2.5
Marina Services	\$15.5	199.8	\$5.4	\$9.8
Restaurant	\$15.2	300.5	\$5.2	\$7.3
Recreation & Entertainment	\$3.6	45.7	\$1.2	\$2.2
Repair & Maintenance	\$13.5	168.8	\$5.0	\$7.0
Insurance & Credit	\$7.7	55.6	\$3.3	\$7.0
Gas Service	\$7.8	92.7	\$3.7	\$5.9
Other Retail Trade	\$11.2	210.0	\$5.5	\$8.8
Wholesale Trade	\$7.5	47.8	\$3.2	\$5.7
Other Local Production of Goods	\$27.8	62.5	\$3.8	\$5.4
Total Direct Effects	\$113.3	1,227.4	\$37.8	\$61.7
Secondary Effects	\$184.6	1,313.1	\$58.5	\$100.1
Total Effects	\$297.9	2,540.5	\$96.3	\$161.8

The Wisconsin 3rd Congressional District

Table 1. The Wisconsin 3rd Congressional District Description

Area (square miles)	13,566
Navigable Waterbody (square miles)	483
Total Population (2007)	709,839
Population Density (per square mile) (2007)	51
Persons 18+ (2007)	550,360
Number of Households (2007)	285,318

Table 2. Registered Boats Owned by Residents Residing in the Wisconsin 3rd Congressional District

	3rd CD	State Total
Number of Registered Boats	75,914	547,788
Type of Registered Boats		
Power Boats	72,215	504,454
Outboards	64,658	438,575
Inboards	1,077	11,164
Stern Drives	6,142	51,848
Jet Boats	338	2,867
Personal Watercraft	2,951	32,688
Sailboats	748	10,646
Size of Registered Boats		
≤ 15'	34,986	258,045
16'-24'	39,049	274,243
25'-39'	1,607	14,362
40' +	272	1,138
Per Capita Ownership of Registered Boats		
All Population	107/1000	98/1000
Persons 18 +	138/1000	133/1000
Households	266/1000	243/1000

Table 3. Boating-related Businesses Based on NAICS Codes

Category	3rd CD	State Total
Boat Building		
No. of Businesses	-	21
No. of Employees	-	2,190
Total Sales (\$ Millions)	-	\$305.3
Motors & Engines Mfg.		
No. of Businesses	-	4
No. of Employees	-	224
Total Sales (\$ Millions)	-	\$73.7
Accessories & Supplies Mfg.		
No. of Businesses	1	19
No. of Employees	12	112
Total Sales (\$ Millions)	\$0.7	\$6.9
Dealers & Wholesalers		
No. of Businesses	17	247
No. of Employees	101	1,427
Total Sales (\$ Millions)	\$23.6	\$351.3
Boating Services		
No. of Businesses	16	192
No. of Employees	52	1,306
Total Sales (\$ Millions)	\$3.1	\$65.0

Figure 1. Location of the Wisconsin 3rd Congressional District

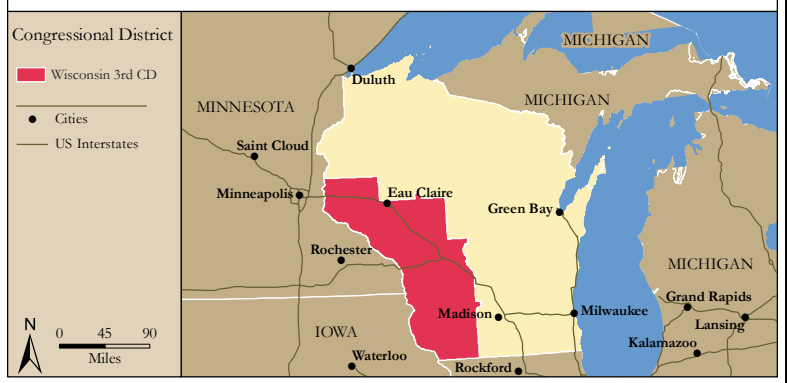


Figure 2. Navigable Waters of the Wisconsin 3rd Congressional District

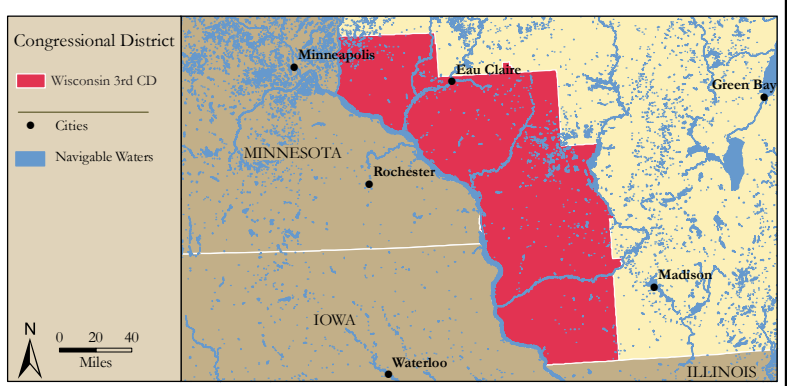


Figure 3. Number of Registered Boats by Zipcode within the Wisconsin 3rd Congressional District

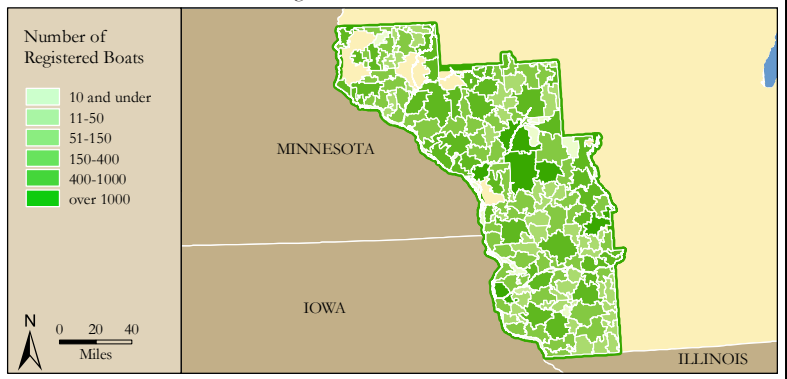
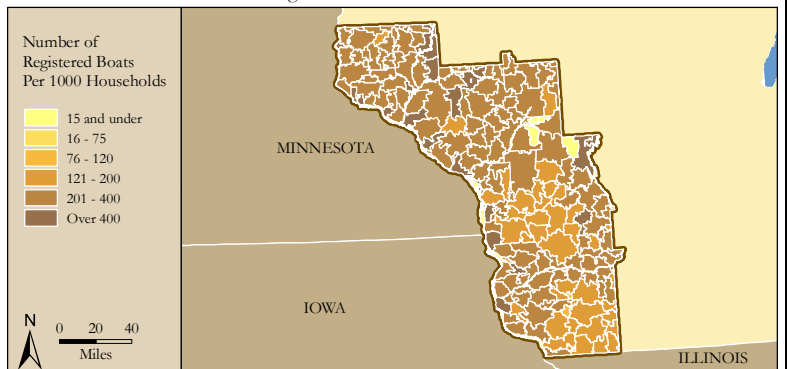


Figure 4. Per Capita (Household) Ownership of Registered Boats by Zipcode within the Wisconsin 3rd Congressional District



Economic Significance of Boating

Table 1. Craft and Trip Expenses by Power and Sailboats Registered in the Wisconsin 3rd Congressional District

Category	Boat Type and Size								Total
	Power <15'	Power 16' - 24'	Power 25' - 39'	Power 40'+	Sail <15'	Sail 16' - 24'	Sail 25' - 39'	Sail 40+	
Number of boats (Thousands of boats)	31.8	38.7	1.5	0.3	0.3	0.4	0.1	0.0	73.0
Annual craft spending (\$ per boat per year)	\$457.9	\$1,655.6	\$7,464.6	\$25,299.0	\$488.7	\$1,830.2	\$7,439.8	\$18,328.8	
Total craft spending (\$ Millions)	\$14.6	\$64.1	\$11.0	\$6.7	\$0.1	\$0.7	\$0.9	\$0.2	\$98.2
Total boat days (Thousands of days)	517.4	968.8	45.4	11.4	4.9	6.9	4.0	0.4	1,559.3
Total trip spending (\$ per boat per year)	\$935.9	\$2,148.4	\$4,574.4	\$8,039.6	\$1,009.7	\$1,009.7	\$1,963.9	\$5,204.7	
Total trip spending (\$ Millions)	\$29.7	\$83.1	\$6.8	\$2.1	\$0.3	\$0.4	\$0.2	\$0.0	\$122.7
Total craft & trip spending (\$ Millions)	\$44.3	\$147.2	\$17.8	\$8.8	\$0.4	\$1.0	\$1.2	\$0.2	\$220.9

Table 2. Total Spending on Boat Trips by Power and Sailboat Owners Registered in the Wisconsin 3rd CD

Category	Total (\$ Millions)	Percentage
Lodging	\$5.1	4%
Marina services	\$9.7	8%
Restaurant	\$22.0	18%
Groceries	\$22.4	18%
Boat fuel	\$27.7	23%
Auto fuel	\$23.6	19%
Repair & Maintenance	-	-
Marine supplies	-	-
Recreation & Entertainment	\$5.3	4%
Shopping	\$3.9	3%
Other services	-	-
Other goods	\$3.1	3%
Total	\$122.7	100%

Table 3. Total Annual Craft Spending (not including purchases of boats) by Power and Sailboat Owners Registered in the Wisconsin 3rd CD

Category	Total (\$ Millions)	Percentage
Slip	\$12.8	13%
Loan Payments	\$30.9	31%
Replacement Motors	\$1.5	1%
Replacement Trailers	\$0.4	0%
Insurance	\$9.2	9%
Repairs	\$19.6	20%
Accessories	\$19.6	20%
Taxes	\$4.2	4%
Total	\$98.2	100%

Table 4. Economic Significance of Trip Spending and Annual Craft Spending by Power and Sailboats Registered in the Wisconsin 3rd CD

	Trip Spending	Annual Craft Spending	Total
Direct Effects			
Sales (\$ Millions)	\$103.1	\$61.8	\$164.9
Jobs	1,075.6	708.6	1,784.2
Labor Income (\$ Millions)	\$31.0	\$23.9	\$55.0
Value Added (\$ Millions)	\$49.7	\$40.0	\$89.8
Total Effects			
Sales (\$ Millions)	\$277.0	\$156.6	\$433.6
Jobs	2,287.6	1,407.1	3,694.7
Labor Income (\$ Millions)	\$84.9	\$55.3	\$140.2
Value Added (\$ Millions)	\$143.3	\$92.2	\$235.5

Table 5. Economic Significance of Power and Sailboats Registered in the Wisconsin 3rd CD

Sector/Spending category	Sales (\$ Millions)	Jobs	Labor Income (\$Millions)	Value Added (\$Millions)
Direct Effects				
Lodging	\$5.1	63.2	\$2.0	\$3.6
Marina Services	\$22.5	288.5	\$7.9	\$14.1
Restaurant	\$22.0	436.2	\$7.5	\$10.6
Recreation & Entertainment	\$5.3	67.8	\$1.8	\$3.3
Repair & Maintenance	\$19.6	245.3	\$7.3	\$10.2
Insurance & Credit	\$11.2	81.6	\$4.8	\$10.3
Gas Service	\$11.4	135.8	\$5.5	\$8.7
Other Retail Trade	\$16.3	305.1	\$7.9	\$12.8
Wholesale Trade	\$10.9	69.7	\$4.7	\$8.3
Other Local Production of Goods	\$40.6	91.0	\$5.5	\$7.8
Total Direct Effects	\$164.9	1,784.2	\$55.0	\$89.8
Secondary Effects	\$268.7	1,910.6	\$85.2	\$145.7
Total Effects	\$433.6	3,694.7	\$140.2	\$235.5

The Wisconsin 4th Congressional District

Table 1. The Wisconsin 4th Congressional District Description

Area (square miles)	112
Navigable Waterbody (square miles)	1
Total Population (2007)	648,127
Population Density (per square mile) (2007)	5,759
Persons 18+ (2007)	467,908
Number of Households (2007)	262,367

Table 2. Registered Boats Owned by Residents Residing in the Wisconsin 4th Congressional District

	4th CD	State Total
Number of Registered Boats	16,295	547,788
Type of Registered Boats		
Power Boats	15,044	504,454
Outboards	13,067	438,575
Inboards	327	11,164
Stern Drives	1,588	51,848
Jet Boats	62	2,867
Personal Watercraft	729	32,688
Sailboats	522	10,646
Size of Registered Boats		
≤ 15'	8,629	258,045
16'-24'	6,991	274,243
25'-39'	629	14,362
40' +	46	1,138
Per Capita Ownership of Registered Boats		
All Population	25/1000	98/1000
Persons 18 +	35/1000	133/1000
Households	62/1000	243/1000

Table 3. Boating-related Businesses Based on NAICS Codes

Category	4th CD	State Total
Boat Building		
No. of Businesses	1	21
No. of Employees	1	2,190
Total Sales (\$ Millions)	\$0.1	\$305.3
Motors & Engines Mfg.		
No. of Businesses	-	4
No. of Employees	-	224
Total Sales (\$ Millions)	-	\$73.7
Accessories & Supplies Mfg.		
No. of Businesses	2	19
No. of Employees	25	112
Total Sales (\$ Millions)	\$1.4	\$6.9
Dealers & Wholesalers		
No. of Businesses	5	247
No. of Employees	16	1,427
Total Sales (\$ Millions)	\$2.2	\$351.3
Boating Services		
No. of Businesses	13	192
No. of Employees	206	1,306
Total Sales (\$ Millions)	\$22.9	\$65.0

Figure 1. Location of the Wisconsin 4th Congressional District



Figure 2. Navigable Waters of the Wisconsin 4th Congressional District

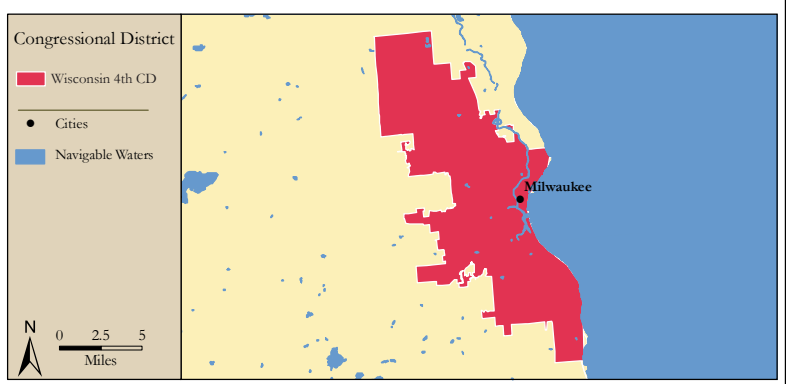


Figure 3. Number of Registered Boats by Zipcode within the Wisconsin 4th Congressional District

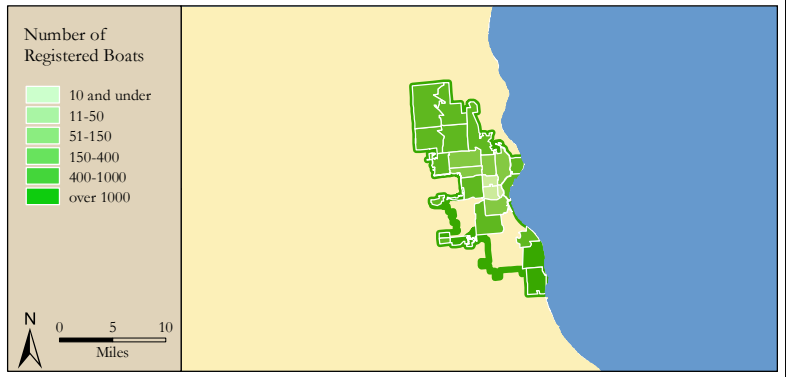
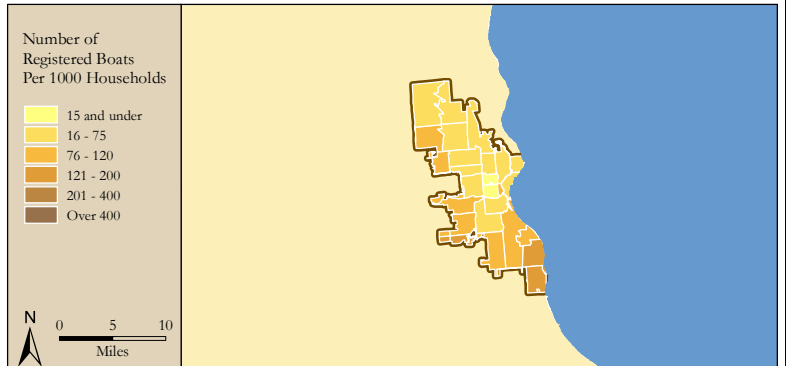


Figure 4. Per Capita (Household) Ownership of Registered Boats by Zipcode within the Wisconsin 4th Congressional District



Economic Significance of Boating

Table 1. Craft and Trip Expenses by Power and Sailboats Registered in the Wisconsin 4th Congressional District

Category	Boat Type and Size								Total
	Power <15'	Power 16' - 24'	Power 25' - 39'	Power 40'+	Sail <15'	Sail 16' - 24'	Sail 25' - 39'	Sail 40+	
Number of boats (Thousands of boats)	7.8	6.8	0.4	0.0	0.1	0.2	0.2	0.0	15.6
Annual craft spending (\$ per boat per year)	\$457.9	\$1,655.6	\$7,464.6	\$25,299.0	\$488.7	\$1,830.2	\$7,439.8	\$18,328.8	
Total craft spending (\$ Millions)	\$3.6	\$11.3	\$3.1	\$0.9	\$0.1	\$0.3	\$1.6	\$0.2	\$21.0
Total boat days (Thousands of days)	126.4	170.9	12.7	1.6	2.6	3.2	6.7	0.5	324.6
Total trip spending (\$ per boat per year)	\$935.9	\$2,148.4	\$4,574.4	\$8,039.6	\$1,009.7	\$1,009.7	\$1,963.9	\$5,204.7	
Total trip spending (\$ Millions)	\$7.3	\$14.7	\$1.9	\$0.3	\$0.1	\$0.2	\$0.4	\$0.1	\$24.9
Total craft & trip spending (\$ Millions)	\$10.8	\$26.0	\$5.0	\$1.2	\$0.2	\$0.5	\$2.0	\$0.2	\$45.9

Table 2. Total Spending on Boat Trips by Power and Sailboat Owners Registered in the Wisconsin 4th CD

Category	Total (\$ Millions)	Percentage
Lodging	\$1.0	4%
Marina services	\$2.1	8%
Restaurant	\$4.5	18%
Groceries	\$4.5	18%
Boat fuel	\$5.5	22%
Auto fuel	\$4.7	19%
Repair & Maintenance	-	-
Marine supplies	-	-
Recreation & Entertainment	\$1.1	4%
Shopping	\$0.8	3%
Other services	-	-
Other goods	\$0.6	3%
Total	\$24.9	100%

Table 3. Total Annual Craft Spending (not including purchases of boats) by Power and Sailboat Owners Registered in the Wisconsin 4th CD

Category	Total (\$ Millions)	Percentage
Slip	\$3.0	14%
Loan Payments	\$6.3	30%
Replacement Motors	\$0.3	1%
Replacement Trailers	\$0.1	0%
Insurance	\$1.9	9%
Repairs	\$4.3	20%
Accessories	\$4.2	20%
Taxes	\$0.9	4%
Total	\$21.0	100%

Table 4. Economic Significance of Trip Spending and Annual Craft Spending by Power and Sailboats Registered in the Wisconsin 4th CD

	Trip Spending	Annual Craft Spending	Total
Direct Effects			
Sales (\$ Millions)	\$21.0	\$13.5	\$34.5
Jobs	220.4	156.1	376.5
Labor Income (\$ Millions)	\$6.3	\$5.2	\$11.6
Value Added (\$ Millions)	\$10.1	\$8.7	\$18.9
Total Effects			
Sales (\$ Millions)	\$56.4	\$34.3	\$90.7
Jobs	467.5	309.6	777.0
Labor Income (\$ Millions)	\$17.3	\$12.1	\$29.4
Value Added (\$ Millions)	\$29.2	\$20.2	\$49.4

Table 5. Economic Significance of Power and Sailboats Registered in the Wisconsin 4th CD

Sector/Spending category	Sales (\$ Millions)	Jobs	Labor Income (\$Millions)	Value Added (\$Millions)
Direct Effects				
Lodging	\$1.0	12.3	\$0.4	\$0.7
Marina Services	\$5.1	65.2	\$1.8	\$3.2
Restaurant	\$4.5	90.1	\$1.5	\$2.2
Recreation & Entertainment	\$1.1	14.0	\$0.4	\$0.7
Repair & Maintenance	\$4.3	53.3	\$1.6	\$2.2
Insurance & Credit	\$2.3	17.0	\$1.0	\$2.1
Gas Service	\$2.3	27.2	\$1.1	\$1.7
Other Retail Trade	\$3.4	64.2	\$1.7	\$2.7
Wholesale Trade	\$2.2	14.3	\$1.0	\$1.7
Other Local Production of Goods	\$8.2	18.8	\$1.1	\$1.6
Total Direct Effects	\$34.5	376.5	\$11.6	\$18.9
Secondary Effects	\$56.2	400.5	\$17.9	\$30.5
Total Effects	\$90.7	777.0	\$29.4	\$49.4

The Wisconsin 5th Congressional District

Table 1. The Wisconsin 5th Congressional District Description

Area (square miles)	1,273
Navigable Waterbody (square miles)	84
Total Population (2007)	704,845
Population Density (per square mile) (2007)	542
Persons 18+ (2007)	548,603
Number of Households (2007)	283,155

Table 2. Registered Boats Owned by Residents Residing in the Wisconsin 5th Congressional District

	5th CD	State Total
Number of Registered Boats	59,980	547,788
Type of Registered Boats		
Power Boats	53,061	504,454
Outboards	42,899	438,575
Inboards	2,021	11,164
Stern Drives	7,750	51,848
Jet Boats	391	2,867
Personal Watercraft	4,770	32,688
Sailboats	2,149	10,646
Size of Registered Boats		
≤ 15'	26,703	258,045
16'-24'	30,898	274,243
25'-39'	2,187	14,362
40' +	192	1,138
Per Capita Ownership of Registered Boats		
All Population	85/1000	98/1000
Persons 18 +	109/1000	133/1000
Households	212/1000	243/1000

Table 3. Boating-related Businesses Based on NAICS Codes

Category	5th CD	State Total
Boat Building		
No. of Businesses	1	21
No. of Employees	1	2,190
Total Sales (\$ Millions)	\$0.0	\$305.3
Motors & Engines Mfg.		
No. of Businesses	1	4
No. of Employees	73	224
Total Sales (\$ Millions)	\$24.1	\$73.7
Accessories & Supplies Mfg.		
No. of Businesses	3	19
No. of Employees	14	112
Total Sales (\$ Millions)	\$1.0	\$6.9
Dealers & Wholesalers		
No. of Businesses	19	247
No. of Employees	132	1,427
Total Sales (\$ Millions)	\$59.1	\$351.3
Boating Services		
No. of Businesses	6	192
No. of Employees	28	1,306
Total Sales (\$ Millions)	\$4.6	\$65.0

Figure 1. Location of the Wisconsin 5th Congressional District



Figure 2. Navigable Waters of the Wisconsin 5th Congressional District

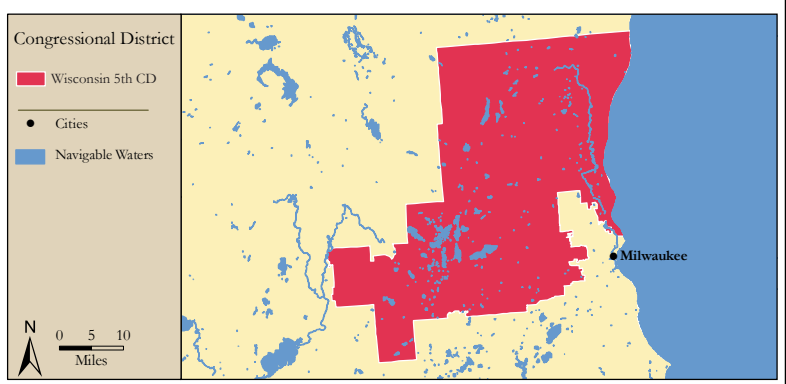


Figure 3. Number of Registered Boats by Zipcode within the Wisconsin 5th Congressional District

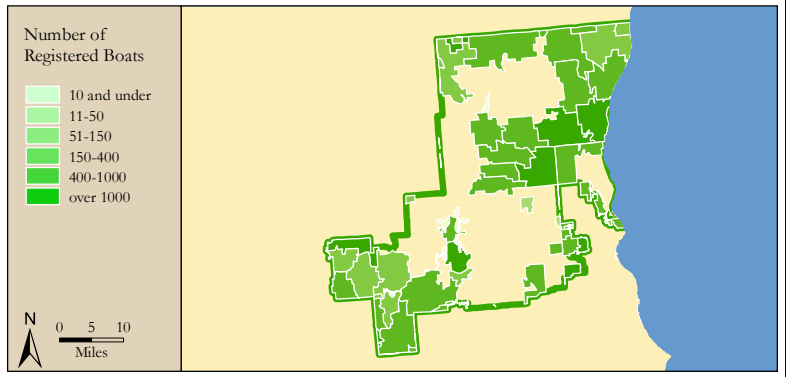
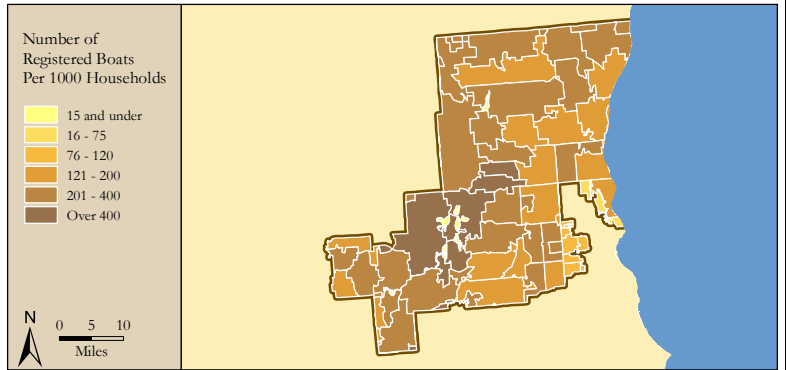


Figure 4. Per Capita (Household) Ownership of Registered Boats by Zipcode within the Wisconsin 5th Congressional District



Economic Significance of Boating

Table 1. Craft and Trip Expenses by Power and Sailboats Registered in the Wisconsin 5th Congressional District

Category	Boat Type and Size								Total
	Power <15'	Power 16' - 24'	Power 25' - 39'	Power 40'+	Sail <15'	Sail 16' - 24'	Sail 25' - 39'	Sail 40+	
Number of boats (Thousands of boats)	21.2	30.0	1.7	0.1	0.8	0.9	0.5	0.0	55.2
Annual craft spending (\$ per boat per year)	\$457.9	\$1,655.6	\$7,464.6	\$25,299.0	\$488.7	\$1,830.2	\$7,439.8	\$18,328.8	
Total craft spending (\$ Millions)	\$9.7	\$49.7	\$12.9	\$3.8	\$0.4	\$1.6	\$3.4	\$0.8	\$82.2
Total boat days (Thousands of days)	344.5	751.8	53.1	6.5	15.0	16.9	14.4	2.0	1,204.0
Total trip spending (\$ per boat per year)	\$935.9	\$2,148.4	\$4,574.4	\$8,039.6	\$1,009.7	\$1,009.7	\$1,963.9	\$5,204.7	
Total trip spending (\$ Millions)	\$19.8	\$64.5	\$7.9	\$1.2	\$0.8	\$0.9	\$0.9	\$0.2	\$96.2
Total craft & trip spending (\$ Millions)	\$29.5	\$114.2	\$20.8	\$5.0	\$1.2	\$2.5	\$4.3	\$1.0	\$178.5

Table 2. Total Spending on Boat Trips by Power and Sailboat Owners Registered in the Wisconsin 5th CD

Category	Total (\$ Millions)	Percentage
Lodging	\$3.9	4%
Marina services	\$7.7	8%
Restaurant	\$17.6	18%
Groceries	\$17.6	18%
Boat fuel	\$21.9	23%
Auto fuel	\$18.1	19%
Repair & Maintenance	-	-
Marine supplies	-	-
Recreation & Entertainment	\$4.1	4%
Shopping	\$3.0	3%
Other services	-	-
Other goods	\$2.4	3%
Total	\$96.2	100%

Table 3. Total Annual Craft Spending (not including purchases of boats) by Power and Sailboat Owners Registered in the Wisconsin 5th CD

Category	Total (\$ Millions)	Percentage
Slip	\$11.6	14%
Loan Payments	\$25.6	31%
Replacement Motors	\$1.1	1%
Replacement Trailers	\$0.3	0%
Insurance	\$7.5	9%
Repairs	\$16.5	20%
Accessories	\$16.2	20%
Taxes	\$3.4	4%
Total	\$82.2	100%

Table 4. Economic Significance of Trip Spending and Annual Craft Spending by Power and Sailboats Registered in the Wisconsin 5th CD

	Trip Spending	Annual Craft Spending	Total
Direct Effects			
Sales (\$ Millions)	\$81.2	\$52.2	\$133.3
Jobs	848.3	600.8	1,449.1
Labor Income (\$ Millions)	\$24.4	\$20.2	\$44.6
Value Added (\$ Millions)	\$39.1	\$33.7	\$72.8
Total Effects			
Sales (\$ Millions)	\$218.1	\$132.3	\$350.4
Jobs	1,802.7	1,191.7	2,994.4
Labor Income (\$ Millions)	\$66.8	\$46.7	\$113.5
Value Added (\$ Millions)	\$112.7	\$77.9	\$190.6

Table 5. Economic Significance of Power and Sailboats Registered in the Wisconsin 5th CD

Sector/Spending category	Sales (\$ Millions)	Jobs	Labor Income (\$Millions)	Value Added (\$Millions)
Direct Effects				
Lodging	\$3.9	49.0	\$1.6	\$2.8
Marina Services	\$19.3	247.4	\$6.7	\$12.1
Restaurant	\$17.6	348.0	\$6.0	\$8.4
Recreation & Entertainment	\$4.1	52.2	\$1.4	\$2.6
Repair & Maintenance	\$16.5	205.8	\$6.1	\$8.6
Insurance & Credit	\$9.2	66.8	\$4.0	\$8.4
Gas Service	\$8.9	105.8	\$4.3	\$6.8
Other Retail Trade	\$13.1	246.2	\$6.4	\$10.3
Wholesale Trade	\$8.6	55.4	\$3.7	\$6.6
Other Local Production of Goods	\$32.1	72.6	\$4.4	\$6.2
Total Direct Effects	\$133.3	1,449.1	\$44.6	\$72.8
Secondary Effects	\$217.1	1,545.3	\$68.9	\$117.8
Total Effects	\$350.4	2,994.4	\$113.5	\$190.6

The Wisconsin 6th Congressional District

Table 1. The Wisconsin 6th Congressional District Description

Area (square miles)	5,641
Navigable Waterbody (square miles)	594
Total Population (2007)	693,373
Population Density (per square mile) (2007)	115
Persons 18+ (2007)	544,512
Number of Households (2007)	282,066

Table 2. Registered Boats Owned by Residents Residing in the Wisconsin 6th Congressional District

	6th CD	State Total
Number of Registered Boats	71,016	547,788
Type of Registered Boats		
Power Boats	65,283	504,454
Outboards	56,411	438,575
Inboards	1,057	11,164
Stern Drives	7,396	51,848
Jet Boats	419	2,867
Personal Watercraft	4,336	32,688
Sailboats	1,397	10,646
Size of Registered Boats		
≤ 15'	33,227	258,045
16'-24'	35,631	274,243
25'-39'	2,045	14,362
40' +	113	1,138
Per Capita Ownership of Registered Boats		
All Population	102/1000	98/1000
Persons 18 +	130/1000	133/1000
Households	252/1000	243/1000

Table 3. Boating-related Businesses Based on NAICS Codes

Category	6th CD	State Total
Boat Building		
No. of Businesses	3	21
No. of Employees	203	2,190
Total Sales (\$ Millions)	\$42.3	\$305.3
Motors & Engines Mfg.		
No. of Businesses	1	4
No. of Employees	150	224
Total Sales (\$ Millions)	\$49.5	\$73.7
Accessories & Supplies Mfg.		
No. of Businesses	2	19
No. of Employees	19	112
Total Sales (\$ Millions)	\$1.2	\$6.9
Dealers & Wholesalers		
No. of Businesses	39	247
No. of Employees	220	1,427
Total Sales (\$ Millions)	\$39.8	\$351.3
Boating Services		
No. of Businesses	34	192
No. of Employees	147	1,306
Total Sales (\$ Millions)	\$6.5	\$65.0

Figure 1. Location of the Wisconsin 6th Congressional District



Figure 2. Navigable Waters of the Wisconsin 6th Congressional District

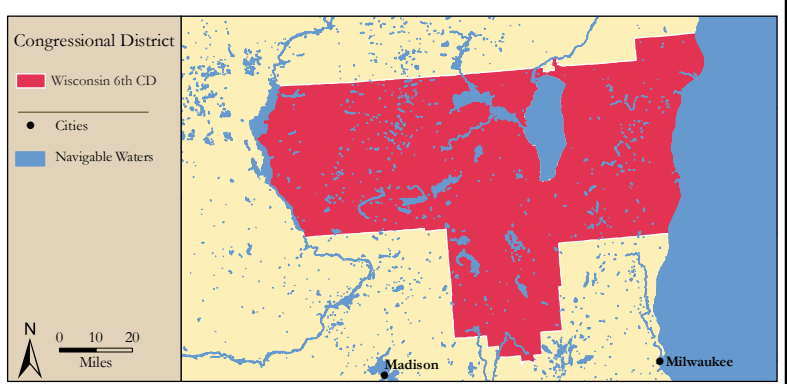


Figure 3. Number of Registered Boats by Zipcode within the Wisconsin 6th Congressional District

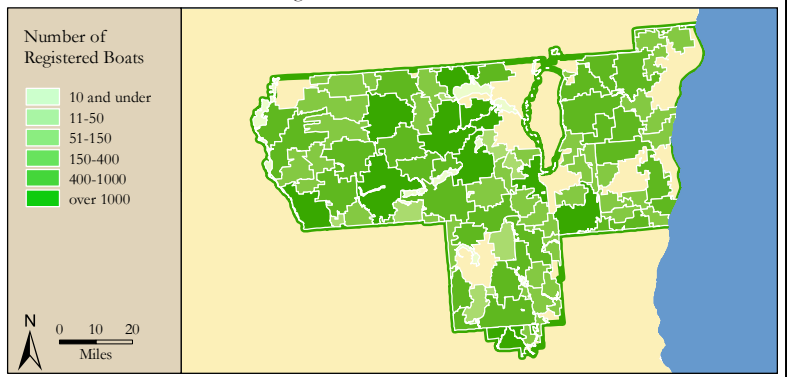
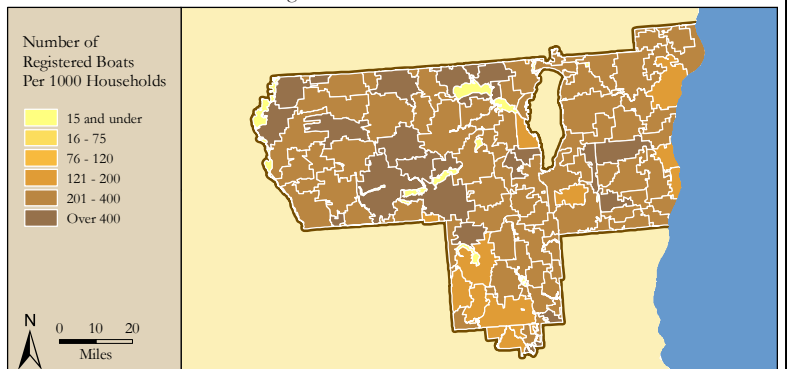


Figure 4. Per Capita (Household) Ownership of Registered Boats by Zipcode within the Wisconsin 6th Congressional District



Economic Significance of Boating

Table 1. Craft and Trip Expenses by Power and Sailboats Registered in the Wisconsin 6th Congressional District

Category	Boat Type and Size								Total
	Power <15'	Power 16' - 24'	Power 25' - 39'	Power 40'+	Sail <15'	Sail 16' - 24'	Sail 25' - 39'	Sail 40+	
Number of boats (Thousands of boats)	28.3	35.1	1.8	0.1	0.6	0.5	0.3	0.0	66.7
Annual craft spending (\$ per boat per year)	\$457.9	\$1,655.6	\$7,464.6	\$25,299.0	\$488.7	\$1,830.2	\$7,439.8	\$18,328.8	
Total craft spending (\$ Millions)	\$13.0	\$58.1	\$13.2	\$2.4	\$0.3	\$1.0	\$2.1	\$0.3	\$90.3
Total boat days (Thousands of days)	461.2	878.8	54.1	4.2	10.9	10.3	8.9	0.8	1,429.1
Total trip spending (\$ per boat per year)	\$935.9	\$2,148.4	\$4,574.4	\$8,039.6	\$1,009.7	\$1,009.7	\$1,963.9	\$5,204.7	
Total trip spending (\$ Millions)	\$26.5	\$75.4	\$8.1	\$0.8	\$0.6	\$0.5	\$0.6	\$0.1	\$112.5
Total craft & trip spending (\$ Millions)	\$39.5	\$133.5	\$21.2	\$3.2	\$0.8	\$1.5	\$2.7	\$0.4	\$202.8

Table 2. Total Spending on Boat Trips by Power and Sailboat Owners Registered in the Wisconsin 6th CD

Category	Total (\$ Millions)	Percentage
Lodging	\$4.6	4%
Marina services	\$8.9	8%
Restaurant	\$20.3	18%
Groceries	\$20.5	18%
Boat fuel	\$25.4	23%
Auto fuel	\$21.5	19%
Repair & Maintenance	-	-
Marine supplies	-	-
Recreation & Entertainment	\$4.8	4%
Shopping	\$3.5	3%
Other services	-	-
Other goods	\$2.9	3%
Total	\$112.5	100%

Table 3. Total Annual Craft Spending (not including purchases of boats) by Power and Sailboat Owners Registered in the Wisconsin 6th CD

Category	Total (\$ Millions)	Percentage
Slip	\$12.1	13%
Loan Payments	\$28.2	31%
Replacement Motors	\$1.3	1%
Replacement Trailers	\$0.3	0%
Insurance	\$8.4	9%
Repairs	\$18.1	20%
Accessories	\$18.1	20%
Taxes	\$3.8	4%
Total	\$90.3	100%

Table 4. Economic Significance of Trip Spending and Annual Craft Spending by Power and Sailboats Registered in the Wisconsin 6th CD

	Trip Spending	Annual Craft Spending	Total
Direct Effects			
Sales (\$ Millions)	\$94.6	\$57.2	\$151.8
Jobs	988.3	656.6	1,644.9
Labor Income (\$ Millions)	\$28.5	\$22.1	\$50.6
Value Added (\$ Millions)	\$45.6	\$37.0	\$82.6
Total Effects			
Sales (\$ Millions)	\$254.3	\$144.9	\$399.2
Jobs	2,101.0	1,303.5	3,404.4
Labor Income (\$ Millions)	\$77.9	\$51.2	\$129.1
Value Added (\$ Millions)	\$131.5	\$85.3	\$216.8

Table 5. Economic Significance of Power and Sailboats Registered in the Wisconsin 6th CD

Sector/Spending category	Sales (\$ Millions)	Jobs	Labor Income (\$Millions)	Value Added (\$Millions)
Direct Effects				
Lodging	\$4.6	57.7	\$1.9	\$3.3
Marina Services	\$20.9	269.2	\$7.3	\$13.2
Restaurant	\$20.3	402.6	\$6.9	\$9.8
Recreation & Entertainment	\$4.8	62.0	\$1.7	\$3.0
Repair & Maintenance	\$18.1	226.3	\$6.7	\$9.4
Insurance & Credit	\$10.2	74.4	\$4.4	\$9.4
Gas Service	\$10.5	124.3	\$5.0	\$8.0
Other Retail Trade	\$15.0	280.8	\$7.3	\$11.8
Wholesale Trade	\$10.0	64.0	\$4.3	\$7.6
Other Local Production of Goods	\$37.2	83.6	\$5.1	\$7.2
Total Direct Effects	\$151.8	1,644.9	\$50.6	\$82.6
Secondary Effects	\$247.4	1,759.6	\$78.5	\$134.2
Total Effects	\$399.2	3,404.4	\$129.1	\$216.8

The Wisconsin 7th Congressional District

Table 1. The Wisconsin 7th Congressional District Description

Area (square miles)	18,787
Navigable Waterbody (square miles)	2,314
Total Population (2007)	689,600
Population Density (per square mile) (2007)	36
Persons 18+ (2007)	541,899
Number of Households (2007)	291,883

Table 2. Registered Boats Owned by Residents Residing in the Wisconsin 7th Congressional District

	7th CD	State Total
Number of Registered Boats	112,223	547,788
Type of Registered Boats		
Power Boats	106,564	504,454
Outboards	98,838	438,575
Inboards	1,523	11,164
Stern Drives	5,810	51,848
Jet Boats	393	2,867
Personal Watercraft	4,396	32,688
Sailboats	1,263	10,646
Size of Registered Boats		
≤ 15'	57,321	258,045
16'-24'	52,991	274,243
25'-39'	1,850	14,362
40' +	61	1,138
Per Capita Ownership of Registered Boats		
All Population	163/1000	98/1000
Persons 18 +	207/1000	133/1000
Households	384/1000	243/1000

Table 3. Boating-related Businesses Based on NAICS Codes

Category	7th CD	State Total
Boat Building		
No. of Businesses	4	21
No. of Employees	43	2,190
Total Sales (\$ Millions)	\$6.9	\$305.3
Motors & Engines Mfg.		
No. of Businesses	-	4
No. of Employees	-	224
Total Sales (\$ Millions)	-	\$73.7
Accessories & Supplies Mfg.		
No. of Businesses	4	19
No. of Employees	6	112
Total Sales (\$ Millions)	\$0.4	\$6.9
Dealers & Wholesalers		
No. of Businesses	49	247
No. of Employees	310	1,427
Total Sales (\$ Millions)	\$68.0	\$351.3
Boating Services		
No. of Businesses	25	192
No. of Employees	114	1,306
Total Sales (\$ Millions)	\$6.3	\$65.0

Figure 1. Location of the Wisconsin 7th Congressional District



Figure 2. Navigable Waters of the Wisconsin 7th Congressional District

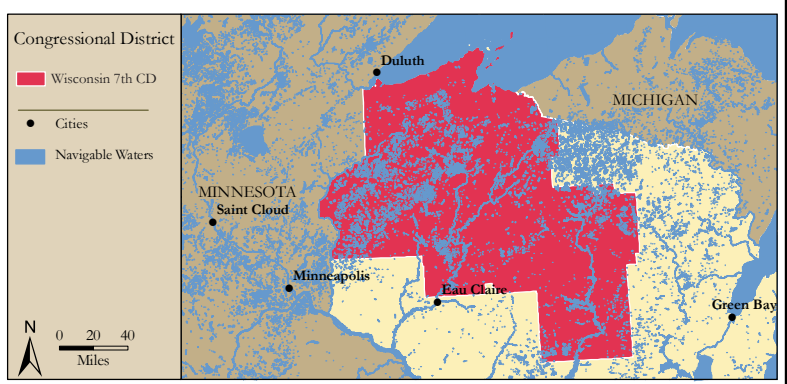


Figure 3. Number of Registered Boats by Zipcode within the Wisconsin 7th Congressional District

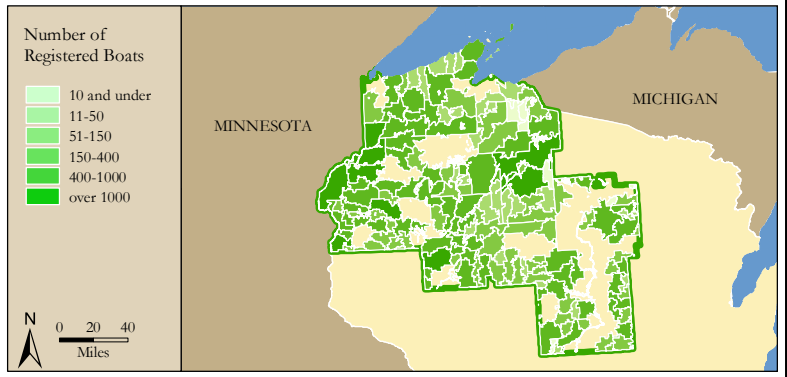
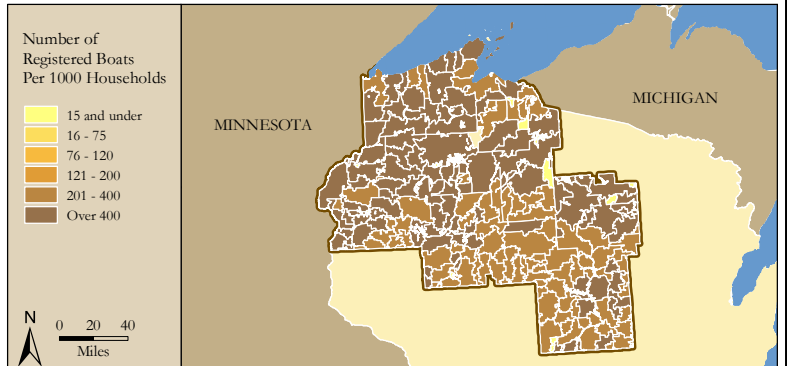


Figure 4. Per Capita (Household) Ownership of Registered Boats by Zipcode within the Wisconsin 7th Congressional District



Economic Significance of Boating

Table 1. Craft and Trip Expenses by Power and Sailboats Registered in the Wisconsin 7th Congressional District

Category	Boat Type and Size								Total
	Power <15'	Power 16' - 24'	Power 25' - 39'	Power 40'+	Sail <15'	Sail 16' - 24'	Sail 25' - 39'	Sail 40+	
Number of boats (Thousands of boats)	52.4	52.5	1.7	0.1	0.5	0.5	0.2	0.0	107.8
Annual craft spending (\$ per boat per year)	\$457.9	\$1,655.6	\$7,464.6	\$25,299.0	\$488.7	\$1,830.2	\$7,439.8	\$18,328.8	
Total craft spending (\$ Millions)	\$24.0	\$86.9	\$12.4	\$1.3	\$0.3	\$1.0	\$1.4	\$0.1	\$127.4
Total boat days (Thousands of days)	853.1	1,313.6	50.8	2.3	10.3	10.3	6.1	0.4	2,246.7
Total trip spending (\$ per boat per year)	\$935.9	\$2,148.4	\$4,574.4	\$8,039.6	\$1,009.7	\$1,009.7	\$1,963.9	\$5,204.7	
Total trip spending (\$ Millions)	\$49.0	\$112.7	\$7.6	\$0.4	\$0.5	\$0.5	\$0.4	\$0.0	\$171.2
Total craft & trip spending (\$ Millions)	\$73.0	\$199.6	\$19.9	\$1.8	\$0.8	\$1.5	\$1.8	\$0.2	\$298.6

Table 2. Total Spending on Boat Trips by Power and Sailboat Owners Registered in the Wisconsin 7th CD

Category	Total (\$ Millions)	Percentage
Lodging	\$7.1	4%
Marina services	\$13.4	8%
Restaurant	\$30.7	18%
Groceries	\$31.2	18%
Boat fuel	\$37.7	22%
Auto fuel	\$33.7	20%
Repair & Maintenance	-	-
Marine supplies	-	-
Recreation & Entertainment	\$7.5	4%
Shopping	\$5.5	3%
Other services	-	-
Other goods	\$4.4	3%
Total	\$171.2	100%

Table 3. Total Annual Craft Spending (not including purchases of boats) by Power and Sailboat Owners Registered in the Wisconsin 7th CD

Category	Total (\$ Millions)	Percentage
Slip	\$16.1	13%
Loan Payments	\$38.9	31%
Replacement Motors	\$2.1	2%
Replacement Trailers	\$0.5	0%
Insurance	\$12.1	10%
Repairs	\$25.7	20%
Accessories	\$26.4	21%
Taxes	\$5.5	4%
Total	\$127.4	100%

Table 4. Economic Significance of Trip Spending and Annual Craft Spending by Power and Sailboats Registered in the Wisconsin 7th CD

	Trip Spending	Annual Craft Spending	Total
Direct Effects			
Sales (\$ Millions)	\$143.4	\$81.1	\$224.5
Jobs	1,501.7	928.7	2,430.4
Labor Income (\$ Millions)	\$43.3	\$31.4	\$74.7
Value Added (\$ Millions)	\$69.4	\$52.5	\$121.9
Total Effects			
Sales (\$ Millions)	\$385.4	\$205.5	\$590.9
Jobs	3,190.4	1,844.9	5,035.4
Labor Income (\$ Millions)	\$118.3	\$72.6	\$190.8
Value Added (\$ Millions)	\$199.6	\$121.0	\$320.6

Table 5. Economic Significance of Power and Sailboats Registered in the Wisconsin 7th CD

Sector/Spending category	Sales (\$ Millions)	Jobs	Labor Income (\$Millions)	Value Added (\$Millions)
Direct Effects				
Lodging	\$7.1	88.8	\$2.9	\$5.1
Marina Services	\$29.5	378.8	\$10.3	\$18.6
Restaurant	\$30.7	607.2	\$10.4	\$14.7
Recreation & Entertainment	\$7.5	96.9	\$2.6	\$4.8
Repair & Maintenance	\$25.7	321.2	\$9.5	\$13.4
Insurance & Credit	\$14.7	106.9	\$6.3	\$13.5
Gas Service	\$15.9	189.2	\$7.6	\$12.1
Other Retail Trade	\$22.5	419.2	\$10.9	\$17.6
Wholesale Trade	\$15.0	96.3	\$6.5	\$11.4
Other Local Production of Goods	\$55.8	125.8	\$7.6	\$10.8
Total Direct Effects	\$224.5	2,430.4	\$74.7	\$121.9
Secondary Effects	\$366.4	2,605.0	\$116.1	\$198.7
Total Effects	\$590.9	5,035.4	\$190.8	\$320.6

The Wisconsin 8th Congressional District

Table 1. The Wisconsin 8th Congressional District Description

Area (square miles)	9,740
Navigable Waterbody (square miles)	1,555
Total Population (2007)	709,315
Population Density (per square mile) (2007)	70
Persons 18+ (2007)	547,958
Number of Households (2007)	291,595

Table 2. Registered Boats Owned by Residents Residing in the Wisconsin 8th Congressional District

	8th CD	State Total
Number of Registered Boats	95,800	547,788
Type of Registered Boats		
Power Boats	87,775	504,454
Outboards	76,980	438,575
Inboards	2,006	11,164
Stern Drives	8,222	51,848
Jet Boats	567	2,867
Personal Watercraft	6,333	32,688
Sailboats	1,692	10,646
Size of Registered Boats		
≤ 15'	45,925	258,045
16'-24'	46,931	274,243
25'-39'	2,727	14,362
40' +	217	1,138
Per Capita Ownership of Registered Boats		
All Population	135/1000	98/1000
Persons 18 +	175/1000	133/1000
Households	329/1000	243/1000

Table 3. Boating-related Businesses Based on NAICS Codes

Category	8th CD	State Total
Boat Building		
No. of Businesses	8	21
No. of Employees	1,864	2,190
Total Sales (\$ Millions)	\$248.3	\$305.3
Motors & Engines Mfg.		
No. of Businesses	-	4
No. of Employees	-	224
Total Sales (\$ Millions)	-	\$73.7
Accessories & Supplies Mfg.		
No. of Businesses	2	19
No. of Employees	22	112
Total Sales (\$ Millions)	\$1.2	\$6.9
Dealers & Wholesalers		
No. of Businesses	56	247
No. of Employees	349	1,427
Total Sales (\$ Millions)	\$102.2	\$351.3
Boating Services		
No. of Businesses	51	192
No. of Employees	178	1,306
Total Sales (\$ Millions)	\$10.8	\$65.0

Figure 1. Location of the Wisconsin 8th Congressional District

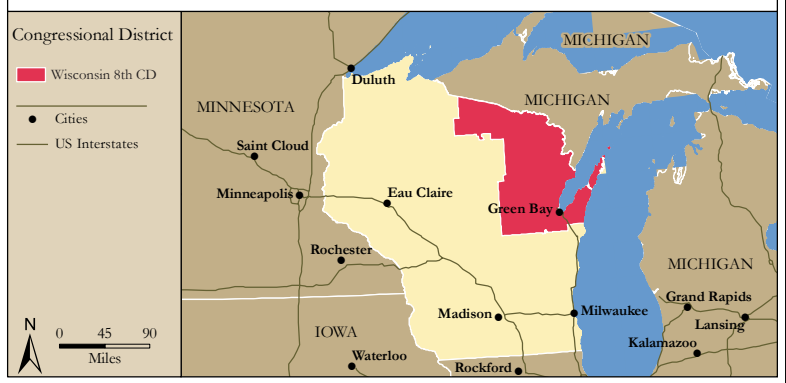


Figure 2. Navigable Waters of the Wisconsin 8th Congressional District

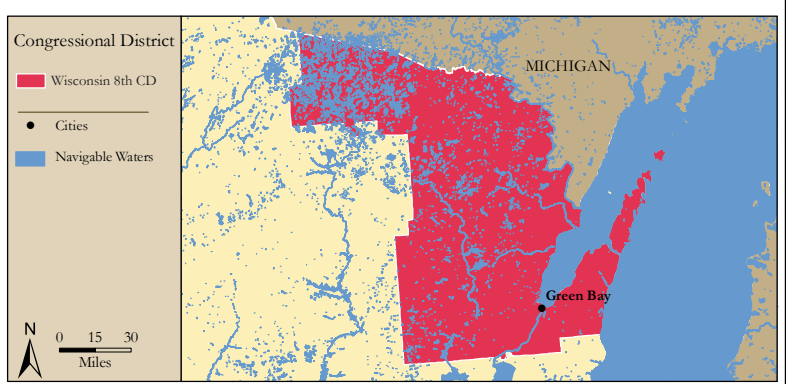


Figure 3. Number of Registered Boats by Zipcode within the Wisconsin 8th Congressional District

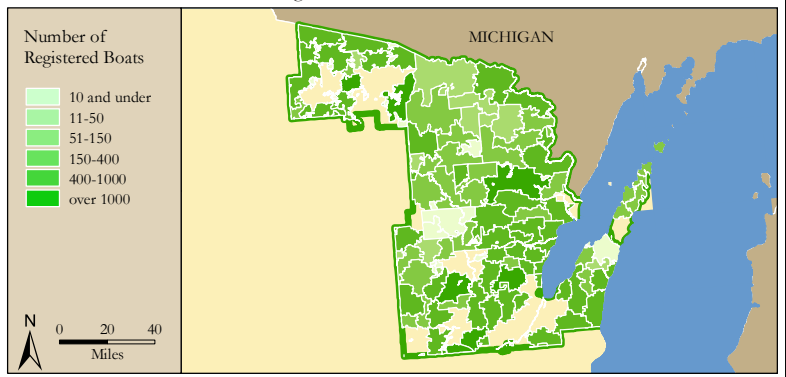
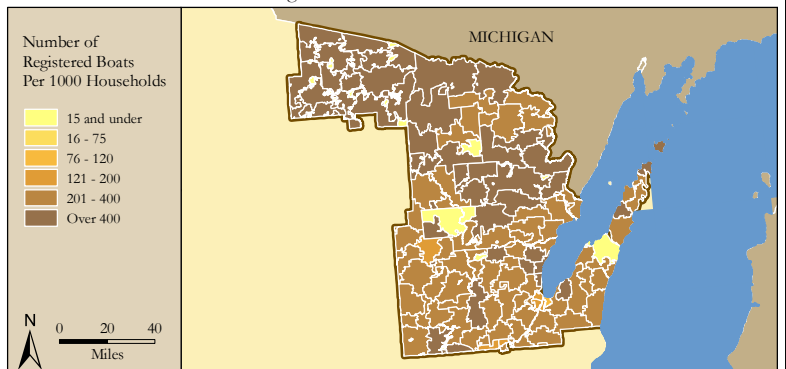


Figure 4. Per Capita (Household) Ownership of Registered Boats by Zipcode within the Wisconsin 8th Congressional District



Economic Significance of Boating

Table 1. Craft and Trip Expenses by Power and Sailboats Registered in the Wisconsin 8th Congressional District

Category	Boat Type and Size								Total
	Power <15'	Power 16' - 24'	Power 25' - 39'	Power 40'+	Sail <15'	Sail 16' - 24'	Sail 25' - 39'	Sail 40+	
Number of boats (Thousands of boats)	38.9	46.4	2.3	0.2	0.7	0.6	0.4	0.0	89.5
Annual craft spending (\$ per boat per year)	\$457.9	\$1,655.6	\$7,464.6	\$25,299.0	\$488.7	\$1,830.2	\$7,439.8	\$18,328.8	
Total craft spending (\$ Millions)	\$17.8	\$76.8	\$17.3	\$4.6	\$0.3	\$1.0	\$3.0	\$0.7	\$121.5
Total boat days (Thousands of days)	633.3	1,161.2	71.3	7.8	13.4	10.8	12.7	1.7	1,912.1
Total trip spending (\$ per boat per year)	\$935.9	\$2,148.4	\$4,574.4	\$8,039.6	\$1,009.7	\$1,009.7	\$1,963.9	\$5,204.7	
Total trip spending (\$ Millions)	\$36.4	\$99.6	\$10.6	\$1.4	\$0.7	\$0.6	\$0.8	\$0.2	\$150.4
Total craft & trip spending (\$ Millions)	\$54.2	\$176.4	\$28.0	\$6.0	\$1.0	\$1.6	\$3.8	\$0.9	\$271.9

Table 2. Total Spending on Boat Trips by Power and Sailboat Owners Registered in the Wisconsin 8th CD

Category	Total (\$ Millions)	Percentage
Lodging	\$6.2	4%
Marina services	\$11.9	8%
Restaurant	\$27.2	18%
Groceries	\$27.4	18%
Boat fuel	\$34.0	23%
Auto fuel	\$28.7	19%
Repair & Maintenance	-	-
Marine supplies	-	-
Recreation & Entertainment	\$6.5	4%
Shopping	\$4.7	3%
Other services	-	-
Other goods	\$3.8	3%
Total	\$150.4	100%

Table 3. Total Annual Craft Spending (not including purchases of boats) by Power and Sailboat Owners Registered in the Wisconsin 8th CD

Category	Total (\$ Millions)	Percentage
Slip	\$16.3	13%
Loan Payments	\$37.9	31%
Replacement Motors	\$1.8	1%
Replacement Trailers	\$0.4	0%
Insurance	\$11.3	9%
Repairs	\$24.4	20%
Accessories	\$24.3	20%
Taxes	\$5.2	4%
Total	\$121.5	100%

Table 4. Economic Significance of Trip Spending and Annual Craft Spending by Power and Sailboats Registered in the Wisconsin 8th CD

	Trip Spending	Annual Craft Spending	Total
Direct Effects			
Sales (\$ Millions)	\$126.5	\$76.9	\$203.4
Jobs	1,321.3	883.2	2,204.6
Labor Income (\$ Millions)	\$38.1	\$29.8	\$67.8
Value Added (\$ Millions)	\$61.0	\$49.7	\$110.8
Total Effects			
Sales (\$ Millions)	\$339.9	\$194.9	\$534.9
Jobs	2,808.9	1,753.3	4,562.2
Labor Income (\$ Millions)	\$104.1	\$68.8	\$173.0
Value Added (\$ Millions)	\$175.8	\$114.8	\$290.6

Table 5. Economic Significance of Power and Sailboats Registered in the Wisconsin 8th CD

Sector/Spending category	Sales (\$ Millions)	Jobs	Labor Income (\$Millions)	Value Added (\$Millions)
Direct Effects				
Lodging	\$6.2	76.8	\$2.5	\$4.4
Marina Services	\$28.2	362.3	\$9.9	\$17.8
Restaurant	\$27.2	538.0	\$9.2	\$13.0
Recreation & Entertainment	\$6.5	83.0	\$2.3	\$4.1
Repair & Maintenance	\$24.4	304.6	\$9.0	\$12.7
Insurance & Credit	\$13.8	100.1	\$5.9	\$12.6
Gas Service	\$14.0	166.1	\$6.7	\$10.6
Other Retail Trade	\$20.1	376.2	\$9.8	\$15.8
Wholesale Trade	\$13.4	85.6	\$5.7	\$10.2
Other Local Production of Goods	\$49.8	111.8	\$6.8	\$9.6
Total Direct Effects	\$203.4	2,204.6	\$67.8	\$110.8
Secondary Effects	\$331.5	2,357.6	\$105.1	\$179.8
Total Effects	\$534.9	4,562.2	\$173.0	\$290.6