

The Mississippi 1st Congressional District

Table 1. The Mississippi 1st Congressional District Description

Area (square miles)	11,413
Navigable Waterbody (square miles)	416
Total Population (2007)	763,153
Population Density (per square mile) (2007)	66
Persons 18+ (2007)	574,932
Number of Households (2007)	285,369

Table 2. Registered Boats Owned by Residents Residing in the Mississippi 1st Congressional District

	1st CD	State Total
Number of Registered Boats	78,239	286,776
Type of Registered Boats		
Power Boats	71,832	265,313
Outboards	63,539	239,236
Inboards	1,549	5,319
Stern Drives	6,522	19,734
Jet Boats	222	1,024
Personal Watercraft	5,858	18,306
Sailboats	549	3,157

Size of Registered Boats

	1st CD	State Total
≤ 15'	46,732	172,134
16'-24'	29,690	106,971
25'-39'	1,581	6,951
40' +	236	720

Per Capita Ownership of Registered Boats

	1st CD	State Total
All Population	103/1000	98/1000
Persons 18 +	136/1000	134/1000
Households	274/1000	256/1000

Table 3. Boating-related Businesses Based on NAICS Codes

Category	1st CD	State Total
Boat Building		
No. of Businesses	2	5
No. of Employees	400	838
Total Sales (\$ Millions)	\$43.3	\$154.7
Motors & Engines Mfg.		
No. of Businesses	-	-
No. of Employees	-	-
Total Sales (\$ Millions)	-	-
Accessories & Supplies Mfg.		
No. of Businesses	2	4
No. of Employees	27	37
Total Sales (\$ Millions)	\$1.4	\$1.8
Dealers & Wholesalers		
No. of Businesses	22	73
No. of Employees	115	292
Total Sales (\$ Millions)	\$18.8	\$61.1
Boating Services		
No. of Businesses	16	56
No. of Employees	69	231
Total Sales (\$ Millions)	\$3.7	\$12.0

Figure 1. Location of the Mississippi 1st Congressional District

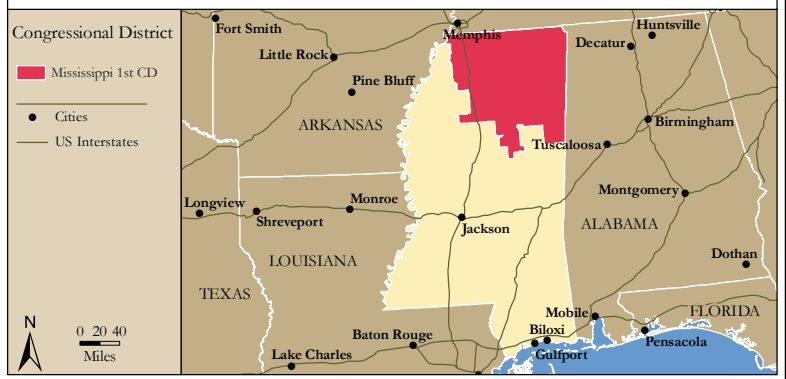


Figure 2. Navigable Waters of the Mississippi 1st Congressional District

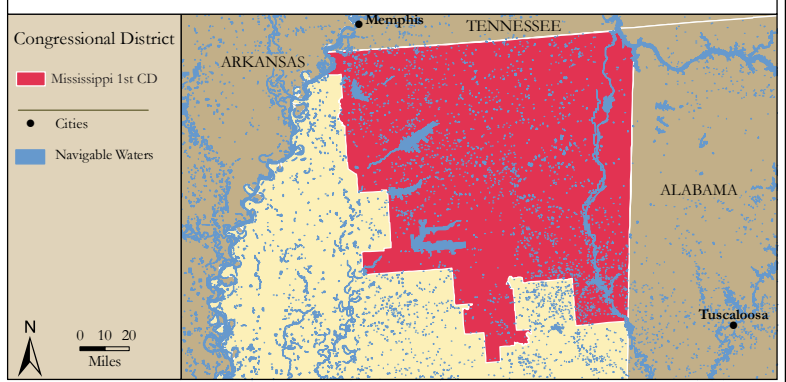


Figure 3. Number of Registered Boats by Zipcode within the Mississippi 1st Congressional District

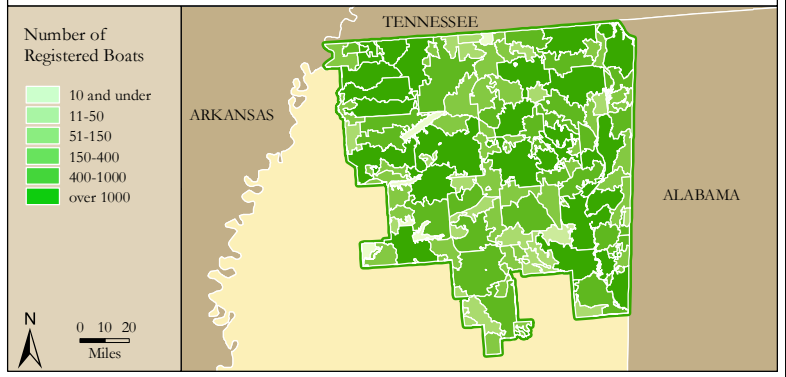
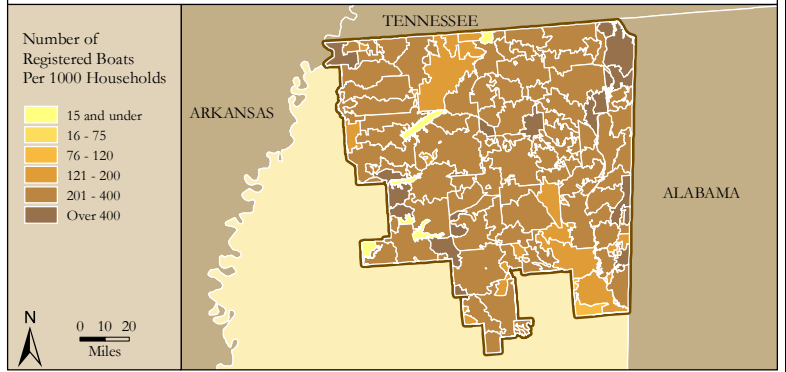


Figure 4. Per Capita (Household) Ownership of Registered Boats by Zipcode within the Mississippi 1st Congressional District



Economic Significance of Boating

Table 1. Craft and Trip Expenses by Power and Sailboats Registered in the Mississippi 1st Congressional District

Category	Boat Type and Size								Total
	Power <15'	Power 16' - 24'	Power 25' - 39'	Power 40'+	Sail <15'	Sail 16' - 24'	Sail 25' - 39'	Sail 40+	
Number of boats (Thousands of boats)	40.6	29.5	1.5	0.2	0.3	0.2	0.1	0.0	72.4
Annual craft spending (\$ per boat per year)	\$457.9	\$1,655.6	\$7,464.6	\$25,299.0	\$488.7	\$1,830.2	\$7,439.8	\$18,328.8	
Total craft spending (\$ Millions)	\$18.6	\$48.8	\$11.2	\$5.9	\$0.1	\$0.4	\$0.6	\$0.1	\$85.7
Total boat days (Thousands of days)	661.2	738.2	46.2	10.1	5.0	4.1	2.3	0.2	1,467.3
Total trip spending (\$ per boat per year)	\$935.9	\$2,148.4	\$4,574.4	\$8,039.6	\$1,009.7	\$1,009.7	\$1,963.9	\$5,204.7	
Total trip spending (\$ Millions)	\$38.0	\$63.3	\$6.9	\$1.9	\$0.3	\$0.2	\$0.1	\$0.0	\$110.7
Total craft & trip spending (\$ Millions)	\$56.6	\$112.1	\$18.1	\$7.7	\$0.4	\$0.6	\$0.7	\$0.1	\$196.4

Table 2. Total Spending on Boat Trips by Power and Sailboat Owners Registered in the Mississippi 1st CD

Category	Total (\$ Millions)	Percentage
Lodging	\$4.4	4%
Marina services	\$9.0	8%
Restaurant	\$19.9	18%
Groceries	\$19.9	18%
Boat fuel	\$24.6	22%
Auto fuel	\$21.5	19%
Repair & Maintenance	-	-
Marine supplies	-	-
Recreation & Entertainment	\$5.0	4%
Shopping	\$3.7	3%
Other services	-	-
Other goods	\$2.8	3%
Total	\$110.7	100%

Table 3. Total Annual Craft Spending (not including purchases of boats) by Power and Sailboat Owners Registered in the Mississippi 1st CD

Category	Total (\$ Millions)	Percentage
Slip	\$11.0	13%
Loan Payments	\$26.2	31%
Replacement Motors	\$1.3	2%
Replacement Trailers	\$0.3	0%
Insurance	\$8.2	10%
Repairs	\$17.3	20%
Accessories	\$17.6	21%
Taxes	\$3.7	4%
Total	\$85.7	100%

Table 4. Economic Significance of Trip Spending and Annual Craft Spending by Power and Sailboats Registered in the Mississippi 1st CD

	Trip Spending	Annual Craft Spending	Total
Direct Effects			
Sales (\$ Millions)	\$93.0	\$54.5	\$147.5
Jobs	974.5	624.9	1,599.4
Labor Income (\$ Millions)	\$28.1	\$21.1	\$49.2
Value Added (\$ Millions)	\$45.0	\$35.3	\$80.3
Total Effects			
Sales (\$ Millions)	\$249.8	\$138.1	\$388.0
Jobs	2,068.8	1,240.9	3,309.7
Labor Income (\$ Millions)	\$76.6	\$48.8	\$125.4
Value Added (\$ Millions)	\$129.4	\$81.3	\$210.7

Table 5. Economic Significance of Power and Sailboats Registered in the Mississippi 1st CD

Sector/Spending category	Sales (\$ Millions)	Jobs	Labor Income (\$Millions)	Value Added (\$Millions)
Direct Effects				
Lodging	\$4.4	54.5	\$1.8	\$3.1
Marina Services	\$20.1	257.9	\$7.0	\$12.6
Restaurant	\$19.9	394.2	\$6.8	\$9.6
Recreation & Entertainment	\$5.0	63.8	\$1.7	\$3.1
Repair & Maintenance	\$17.3	216.0	\$6.4	\$9.0
Insurance & Credit	\$9.9	71.8	\$4.2	\$9.0
Gas Service	\$10.3	122.1	\$4.9	\$7.8
Other Retail Trade	\$14.7	274.8	\$7.1	\$11.6
Wholesale Trade	\$9.8	62.6	\$4.2	\$7.4
Other Local Production of Goods	\$36.3	81.7	\$5.0	\$7.0
Total Direct Effects	\$147.5	1,599.4	\$49.2	\$80.3
Secondary Effects	\$240.5	1,710.3	\$76.2	\$130.4
Total Effects	\$388.0	3,309.7	\$125.4	\$210.7

The Mississippi 2nd Congressional District

Table 1. The Mississippi 2nd Congressional District Description

Area (square miles)	13,625
Navigable Waterbody (square miles)	449
Total Population (2007)	698,337
Population Density (per square mile) (2007)	50
Persons 18+ (2007)	505,752
Number of Households (2007)	251,640

Table 2. Registered Boats Owned by Residents Residing in the Mississippi 2nd Congressional District

	2nd CD	State Total
Number of Registered Boats	45,784	286,776
Type of Registered Boats		
Power Boats	43,432	265,313
Outboards	40,189	239,236
Inboards	570	5,319
Stern Drives	2,567	19,734
Jet Boats	106	1,024
Personal Watercraft	1,979	18,306
Sailboats	373	3,157
Size of Registered Boats		
≤ 15'	31,012	172,134
16'-24'	14,019	106,971
25'-39'	668	6,951
40' +	85	720
Per Capita Ownership of Registered Boats		
All Population	66/1000	98/1000
Persons 18 +	91/1000	134/1000
Households	182/1000	256/1000

Table 3. Boating-related Businesses Based on NAICS Codes

Category	2nd CD	State Total
Boat Building		
No. of Businesses	-	5
No. of Employees	-	838
Total Sales (\$ Millions)	-	\$154.7
Motors & Engines Mfg.		
No. of Businesses	-	-
No. of Employees	-	-
Total Sales (\$ Millions)	-	-
Accessories & Supplies Mfg.		
No. of Businesses	-	4
No. of Employees	-	37
Total Sales (\$ Millions)	-	\$1.8
Dealers & Wholesalers		
No. of Businesses	6	73
No. of Employees	19	292
Total Sales (\$ Millions)	\$2.4	\$61.1
Boating Services		
No. of Businesses	3	56
No. of Employees	33	231
Total Sales (\$ Millions)	\$1.1	\$12.0

Figure 1. Location of the Mississippi 2nd Congressional District

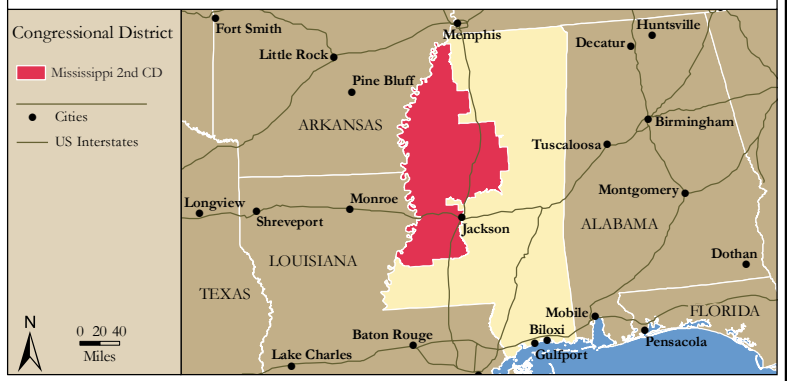


Figure 2. Navigable Waters of the Mississippi 2nd Congressional District

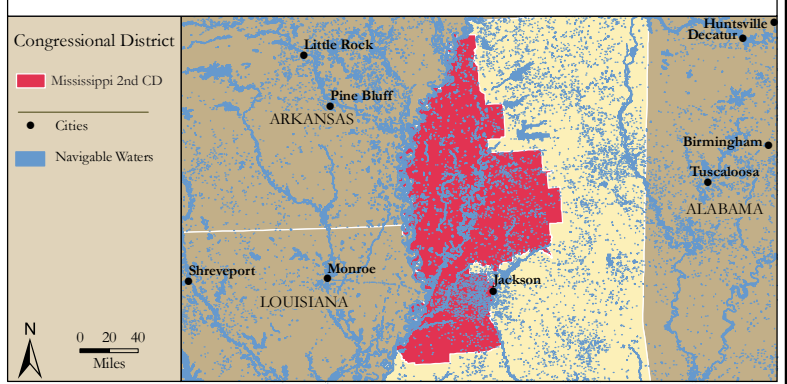


Figure 3. Number of Registered Boats by Zipcode within the Mississippi 2nd Congressional District

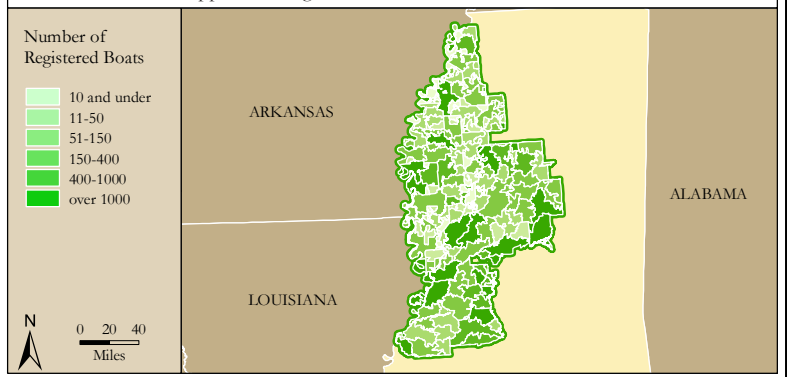
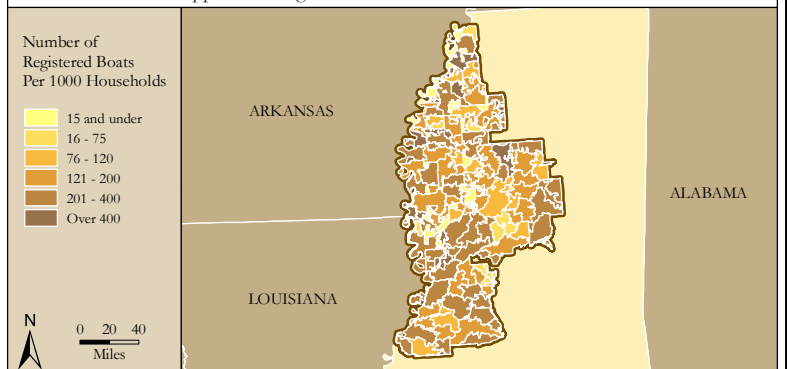


Figure 4. Per Capita (Household) Ownership of Registered Boats by Zipcode within the Mississippi 2nd Congressional District



Economic Significance of Boating

Table 1. Craft and Trip Expenses by Power and Sailboats Registered in the Mississippi 2nd Congressional District

Category	Boat Type and Size								Total
	Power <15'	Power 16' - 24'	Power 25' - 39'	Power 40'+	Sail <15'	Sail 16' - 24'	Sail 25' - 39'	Sail 40+	
Number of boats (Thousands of boats)	28.8	13.9	0.6	0.1	0.2	0.1	0.0	0.0	43.8
Annual craft spending (\$ per boat per year)	\$457.9	\$1,655.6	\$7,464.6	\$25,299.0	\$488.7	\$1,830.2	\$7,439.8	\$18,328.8	
Total craft spending (\$ Millions)	\$13.2	\$23.0	\$4.6	\$2.1	\$0.1	\$0.2	\$0.3	\$0.0	\$43.7
Total boat days (Thousands of days)	469.5	347.8	19.0	3.7	3.8	2.5	1.5	0.0	847.8
Total trip spending (\$ per boat per year)	\$935.9	\$2,148.4	\$4,574.4	\$8,039.6	\$1,009.7	\$1,009.7	\$1,963.9	\$5,204.7	
Total trip spending (\$ Millions)	\$27.0	\$29.8	\$2.8	\$0.7	\$0.2	\$0.1	\$0.1	\$0.0	\$60.8
Total craft & trip spending (\$ Millions)	\$40.2	\$52.8	\$7.5	\$2.8	\$0.3	\$0.4	\$0.4	\$0.0	\$104.4

Table 2. Total Spending on Boat Trips by Power and Sailboat Owners Registered in the Mississippi 2nd CD

Category	Total (\$ Millions)	Percentage
Lodging	\$2.4	4%
Marina services	\$5.0	8%
Restaurant	\$10.9	18%
Groceries	\$10.8	18%
Boat fuel	\$13.0	21%
Auto fuel	\$12.1	20%
Repair & Maintenance	-	-
Marine supplies	-	-
Recreation & Entertainment	\$2.9	5%
Shopping	\$2.1	3%
Other services	-	-
Other goods	\$1.5	3%
Total	\$60.8	100%

Table 3. Total Annual Craft Spending (not including purchases of boats) by Power and Sailboat Owners Registered in the Mississippi 2nd CD

Category	Total (\$ Millions)	Percentage
Slip	\$5.5	12%
Loan Payments	\$12.7	29%
Replacement Motors	\$0.7	2%
Replacement Trailers	\$0.2	0%
Insurance	\$4.3	10%
Repairs	\$8.9	20%
Accessories	\$9.4	22%
Taxes	\$1.9	4%
Total	\$43.7	100%

Table 4. Economic Significance of Trip Spending and Annual Craft Spending by Power and Sailboats Registered in the Mississippi 2nd CD

	Trip Spending	Annual Craft Spending	Total
Direct Effects			
Sales (\$ Millions)	\$50.8	\$28.3	\$79.1
Jobs	536.4	324.0	860.3
Labor Income (\$ Millions)	\$15.4	\$11.0	\$26.4
Value Added (\$ Millions)	\$24.7	\$18.3	\$43.0
Total Effects			
Sales (\$ Millions)	\$136.6	\$71.7	\$208.3
Jobs	1,136.0	643.6	1,779.6
Labor Income (\$ Millions)	\$42.0	\$25.3	\$67.3
Value Added (\$ Millions)	\$70.9	\$42.2	\$113.1

Table 5. Economic Significance of Power and Sailboats Registered in the Mississippi 2nd CD

Sector/Spending category	Sales (\$ Millions)	Jobs	Labor Income (\$Millions)	Value Added (\$Millions)
Direct Effects				
Lodging	\$2.4	29.3	\$0.9	\$1.7
Marina Services	\$10.5	134.9	\$3.7	\$6.6
Restaurant	\$10.9	215.9	\$3.7	\$5.2
Recreation & Entertainment	\$2.9	36.6	\$1.0	\$1.8
Repair & Maintenance	\$8.9	111.7	\$3.3	\$4.6
Insurance & Credit	\$5.1	37.2	\$2.2	\$4.7
Gas Service	\$5.6	66.6	\$2.7	\$4.3
Other Retail Trade	\$8.0	149.5	\$3.9	\$6.3
Wholesale Trade	\$5.3	34.1	\$2.3	\$4.0
Other Local Production of Goods	\$19.6	44.6	\$2.7	\$3.8
Total Direct Effects	\$79.1	860.3	\$26.4	\$43.0
Secondary Effects	\$129.2	919.3	\$40.9	\$70.1
Total Effects	\$208.3	1,779.6	\$67.3	\$113.1

The Mississippi 3rd Congressional District

Table 1. The Mississippi 3rd Congressional District Description

Area (square miles)	13,168
Navigable Waterbody (square miles)	171
Total Population (2007)	739,812
Population Density (per square mile) (2007)	56
Persons 18+ (2007)	557,353
Number of Households (2007)	282,810

Table 2. Registered Boats Owned by Residents Residing in the Mississippi 3rd Congressional District

	3rd CD	State Total
Number of Registered Boats	64,708	286,776
Type of Registered Boats		
Power Boats	60,291	265,313
Outboards	54,694	239,236
Inboards	1,049	5,319
Stern Drives	4,318	19,734
Jet Boats	230	1,024
Personal Watercraft	3,656	18,306
Sailboats	761	3,157
Size of Registered Boats		
≤ 15'	39,859	172,134
16'-24'	23,629	106,971
25'-39'	1,046	6,951
40' +	174	720
Per Capita Ownership of Registered Boats		
All Population	87/1000	98/1000
Persons 18 +	116/1000	134/1000
Households	229/1000	256/1000

Table 3. Boating-related Businesses Based on NAICS Codes

Category	3rd CD	State Total
Boat Building		
No. of Businesses	-	5
No. of Employees	-	838
Total Sales (\$ Millions)	-	\$154.7
Motors & Engines Mfg.		
No. of Businesses	-	-
No. of Employees	-	-
Total Sales (\$ Millions)	-	-
Accessories & Supplies Mfg.		
No. of Businesses	-	4
No. of Employees	-	37
Total Sales (\$ Millions)	-	\$1.8
Dealers & Wholesalers		
No. of Businesses	14	73
No. of Employees	54	292
Total Sales (\$ Millions)	\$10.2	\$61.1
Boating Services		
No. of Businesses	5	56
No. of Employees	14	231
Total Sales (\$ Millions)	\$0.8	\$12.0

Figure 1. Location of the Mississippi 3rd Congressional District

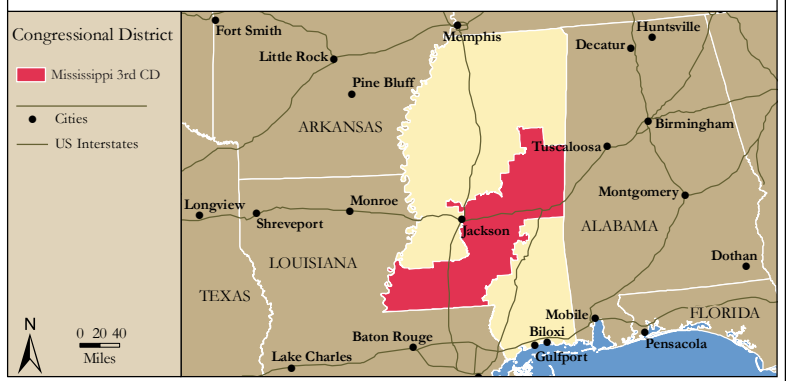


Figure 2. Navigable Waters of the Mississippi 3rd Congressional District

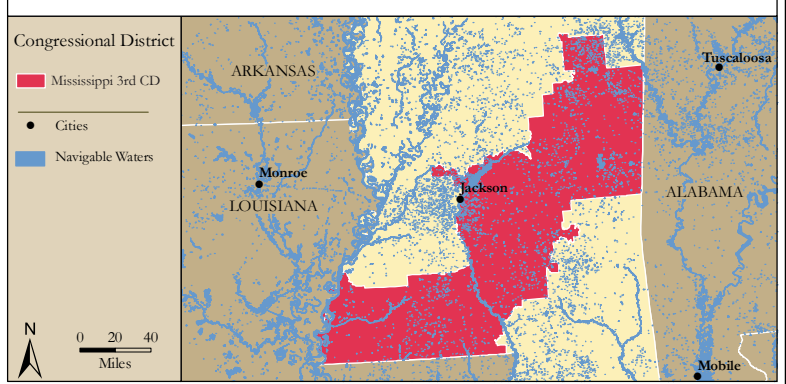


Figure 3. Number of Registered Boats by Zipcode within the Mississippi 3rd Congressional District

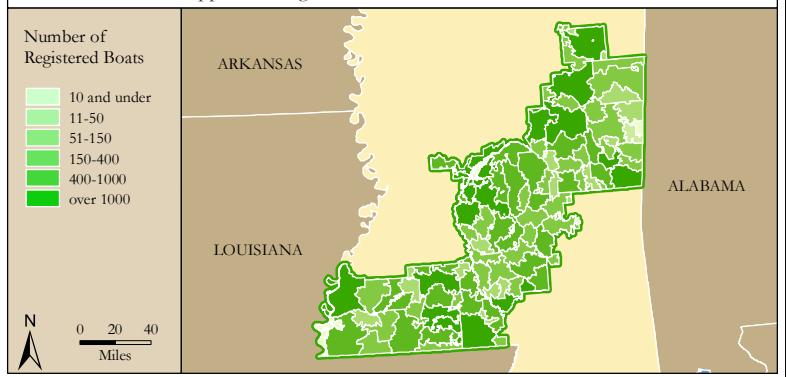
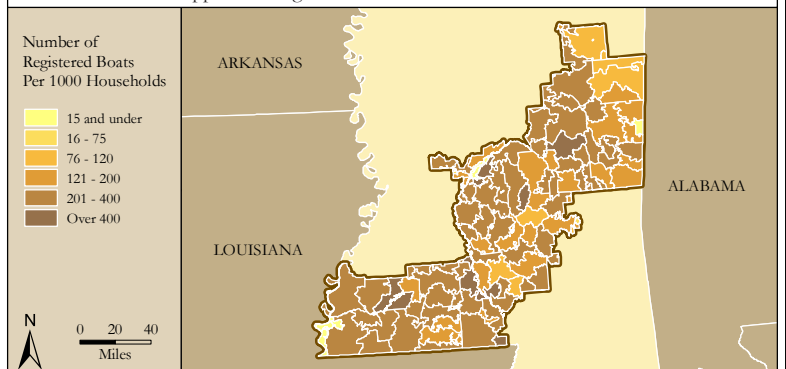


Figure 4. Per Capita (Household) Ownership of Registered Boats by Zipcode within the Mississippi 3rd Congressional District



Economic Significance of Boating

Table 1. Craft and Trip Expenses by Power and Sailboats Registered in the Mississippi 3rd Congressional District

Category	Boat Type and Size								Total
	Power <15'	Power 16' - 24'	Power 25' - 39'	Power 40'+	Sail <15'	Sail 16' - 24'	Sail 25' - 39'	Sail 40+	
Number of boats (Thousands of boats)	35.9	23.3	0.9	0.2	0.3	0.3	0.1	0.0	61.1
Annual craft spending (\$ per boat per year)	\$457.9	\$1,655.6	\$7,464.6	\$25,299.0	\$488.7	\$1,830.2	\$7,439.8	\$18,328.8	
Total craft spending (\$ Millions)	\$16.4	\$38.6	\$6.8	\$4.2	\$0.1	\$0.6	\$1.0	\$0.1	\$67.9
Total boat days (Thousands of days)	584.6	583.7	27.8	7.3	5.8	6.1	4.4	0.3	1,220.0
Total trip spending (\$ per boat per year)	\$935.9	\$2,148.4	\$4,574.4	\$8,039.6	\$1,009.7	\$1,009.7	\$1,963.9	\$5,204.7	
Total trip spending (\$ Millions)	\$33.6	\$50.1	\$4.1	\$1.3	\$0.3	\$0.3	\$0.3	\$0.0	\$90.1
Total craft & trip spending (\$ Millions)	\$50.0	\$88.7	\$10.9	\$5.6	\$0.4	\$0.9	\$1.3	\$0.2	\$158.0

Table 2. Total Spending on Boat Trips by Power and Sailboat Owners Registered in the Mississippi 3rd CD

Category	Total (\$ Millions)	Percentage
Lodging	\$3.6	4%
Marina services	\$7.4	8%
Restaurant	\$16.2	18%
Groceries	\$16.2	18%
Boat fuel	\$19.6	22%
Auto fuel	\$17.7	20%
Repair & Maintenance	-	-
Marine supplies	-	-
Recreation & Entertainment	\$4.1	5%
Shopping	\$3.0	3%
Other services	-	-
Other goods	\$2.3	3%
Total	\$90.1	100%

Table 3. Total Annual Craft Spending (not including purchases of boats) by Power and Sailboat Owners Registered in the Mississippi 3rd CD

Category	Total (\$ Millions)	Percentage
Slip	\$8.7	13%
Loan Payments	\$20.3	30%
Replacement Motors	\$1.1	2%
Replacement Trailers	\$0.3	0%
Insurance	\$6.5	10%
Repairs	\$13.8	20%
Accessories	\$14.2	21%
Taxes	\$3.0	4%
Total	\$67.9	100%

Table 4. Economic Significance of Trip Spending and Annual Craft Spending by Power and Sailboats Registered in the Mississippi 3rd CD

	Trip Spending	Annual Craft Spending	Total
Direct Effects			
Sales (\$ Millions)	\$75.5	\$43.6	\$119.1
Jobs	794.2	500.1	1,294.2
Labor Income (\$ Millions)	\$22.8	\$16.9	\$39.7
Value Added (\$ Millions)	\$36.6	\$28.2	\$64.8
Total Effects			
Sales (\$ Millions)	\$202.9	\$110.5	\$313.5
Jobs	1,684.1	993.1	2,677.1
Labor Income (\$ Millions)	\$62.3	\$39.0	\$101.4
Value Added (\$ Millions)	\$105.2	\$65.1	\$170.3

Table 5. Economic Significance of Power and Sailboats Registered in the Mississippi 3rd CD

Sector/Spending category	Sales (\$ Millions)	Jobs	Labor Income (\$Millions)	Value Added (\$Millions)
Direct Effects				
Lodging	\$3.6	44.5	\$1.4	\$2.5
Marina Services	\$16.1	206.6	\$5.6	\$10.1
Restaurant	\$16.2	320.8	\$5.5	\$7.8
Recreation & Entertainment	\$4.1	52.7	\$1.4	\$2.6
Repair & Maintenance	\$13.8	172.3	\$5.1	\$7.2
Insurance & Credit	\$7.8	57.2	\$3.4	\$7.2
Gas Service	\$8.3	98.9	\$4.0	\$6.3
Other Retail Trade	\$12.0	223.7	\$5.8	\$9.4
Wholesale Trade	\$7.9	50.9	\$3.4	\$6.0
Other Local Production of Goods	\$29.3	66.6	\$4.0	\$5.7
Total Direct Effects	\$119.1	1,294.2	\$39.7	\$64.8
Secondary Effects	\$194.4	1,382.9	\$61.6	\$105.4
Total Effects	\$313.5	2,677.1	\$101.4	\$170.3

The Mississippi 4th Congressional District

Table 1. The Mississippi 4th Congressional District Description

Area (square miles)	8,701
Navigable Waterbody (square miles)	350
Total Population (2007)	748,593
Population Density (per square mile) (2007)	85
Persons 18+ (2007)	563,045
Number of Households (2007)	278,482

Table 2. Registered Boats Owned by Residents Residing in the Mississippi 4th Congressional District

	4th CD	State Total
Number of Registered Boats	97,813	286,776
Type of Registered Boats		
Power Boats	89,546	265,313
Outboards	80,633	239,236
Inboards	2,141	5,319
Stern Drives	6,306	19,734
Jet Boats	466	1,024
Personal Watercraft	6,800	18,306
Sailboats	1,467	3,157

Size of Registered Boats

	4th CD	State Total
≤ 15'	54,407	172,134
16'-24'	39,547	106,971
25'-39'	3,635	6,951
40' +	224	720

Per Capita Ownership of Registered Boats

	4th CD	State Total
All Population	131/1000	98/1000
Persons 18 +	174/1000	134/1000
Households	351/1000	256/1000

Table 3. Boating-related Businesses Based on NAICS Codes

Category	4th CD	State Total
Boat Building		
No. of Businesses	3	5
No. of Employees	438	838
Total Sales (\$ Millions)	\$111.4	\$154.7
Motors & Engines Mfg.		
No. of Businesses	-	-
No. of Employees	-	-
Total Sales (\$ Millions)	-	-
Accessories & Supplies Mfg.		
No. of Businesses	2	4
No. of Employees	10	37
Total Sales (\$ Millions)	\$0.5	\$1.8
Dealers & Wholesalers		
No. of Businesses	31	73
No. of Employees	106	292
Total Sales (\$ Millions)	\$30.0	\$61.1
Boating Services		
No. of Businesses	32	56
No. of Employees	117	231
Total Sales (\$ Millions)	\$6.4	\$12.0

Figure 1. Location of the Mississippi 4th Congressional District



Figure 2. Navigable Waters of the Mississippi 4th Congressional District

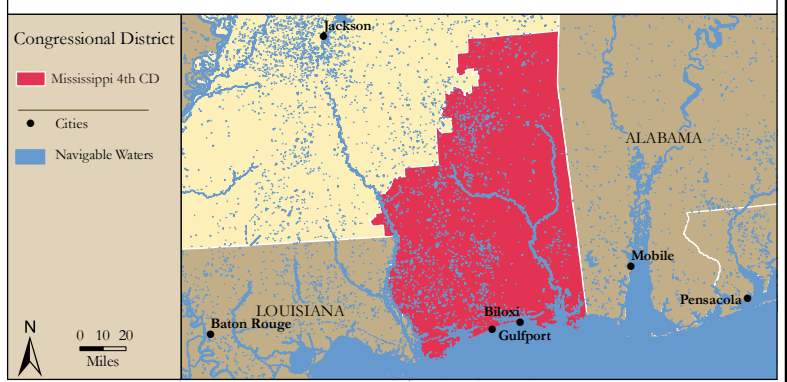


Figure 3. Number of Registered Boats by Zipcode within the Mississippi 4th Congressional District

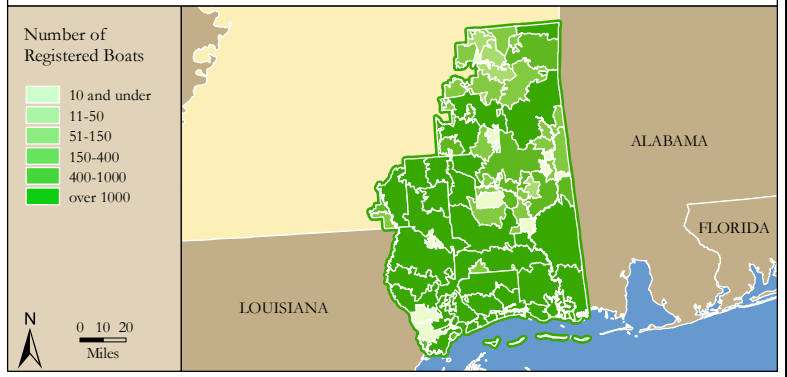
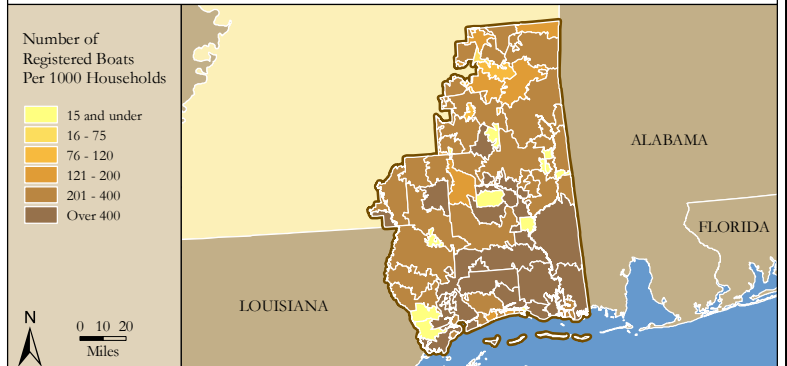


Figure 4. Per Capita (Household) Ownership of Registered Boats by Zipcode within the Mississippi 4th Congressional District



Economic Significance of Boating

Table 1. Craft and Trip Expenses by Power and Sailboats Registered in the Mississippi 4th Congressional District

Category	Boat Type and Size								Total
	Power <15'	Power 16' - 24'	Power 25' - 39'	Power 40'+	Sail <15'	Sail 16' - 24'	Sail 25' - 39'	Sail 40+	
Number of boats (Thousands of boats)	47.2	38.9	3.2	0.2	0.4	0.6	0.4	0.0	91.0
Annual craft spending (\$ per boat per year)	\$457.9	\$1,655.6	\$7,464.6	\$25,299.0	\$488.7	\$1,830.2	\$7,439.8	\$18,328.8	
Total craft spending (\$ Millions)	\$21.6	\$64.4	\$23.9	\$5.2	\$0.2	\$1.2	\$3.2	\$0.3	\$120.1
Total boat days (Thousands of days)	768.8	974.4	98.3	9.0	7.4	12.2	13.5	0.8	1,884.5
Total trip spending (\$ per boat per year)	\$935.9	\$2,148.4	\$4,574.4	\$8,039.6	\$1,009.7	\$1,009.7	\$1,963.9	\$5,204.7	
Total trip spending (\$ Millions)	\$44.2	\$83.6	\$14.7	\$1.7	\$0.4	\$0.6	\$0.8	\$0.1	\$146.1
Total craft & trip spending (\$ Millions)	\$65.8	\$148.0	\$38.6	\$6.9	\$0.6	\$1.8	\$4.0	\$0.4	\$266.1

Table 2. Total Spending on Boat Trips by Power and Sailboat Owners Registered in the Mississippi 4th CD

Category	Total (\$ Millions)	Percentage
Lodging	\$5.7	4%
Marina services	\$12.1	8%
Restaurant	\$26.5	18%
Groceries	\$26.2	18%
Boat fuel	\$33.3	23%
Auto fuel	\$27.5	19%
Repair & Maintenance	-	-
Marine supplies	-	-
Recreation & Entertainment	\$6.4	4%
Shopping	\$4.7	3%
Other services	-	-
Other goods	\$3.7	3%
Total	\$146.1	100%

Table 3. Total Annual Craft Spending (not including purchases of boats) by Power and Sailboat Owners Registered in the Mississippi 4th CD

Category	Total (\$ Millions)	Percentage
Slip	\$16.4	14%
Loan Payments	\$37.0	31%
Replacement Motors	\$1.7	1%
Replacement Trailers	\$0.4	0%
Insurance	\$11.1	9%
Repairs	\$24.2	20%
Accessories	\$24.1	20%
Taxes	\$5.1	4%
Total	\$120.1	100%

Table 4. Economic Significance of Trip Spending and Annual Craft Spending by Power and Sailboats Registered in the Mississippi 4th CD

	Trip Spending	Annual Craft Spending	Total
Direct Effects			
Sales (\$ Millions)	\$123.2	\$76.4	\$199.6
Jobs	1,288.0	878.4	2,166.4
Labor Income (\$ Millions)	\$37.0	\$29.6	\$66.6
Value Added (\$ Millions)	\$59.4	\$49.4	\$108.8
Total Effects			
Sales (\$ Millions)	\$330.9	\$193.7	\$524.6
Jobs	2,735.4	1,743.3	4,478.7
Labor Income (\$ Millions)	\$101.3	\$68.4	\$169.7
Value Added (\$ Millions)	\$171.1	\$114.0	\$285.1

Table 5. Economic Significance of Power and Sailboats Registered in the Mississippi 4th CD

Sector/Spending category	Sales (\$ Millions)	Jobs	Labor Income (\$Millions)	Value Added (\$Millions)
Direct Effects				
Lodging	\$5.7	70.7	\$2.3	\$4.0
Marina Services	\$28.5	366.0	\$10.0	\$17.9
Restaurant	\$26.5	525.1	\$9.0	\$12.7
Recreation & Entertainment	\$6.4	82.3	\$2.2	\$4.0
Repair & Maintenance	\$24.2	302.0	\$8.9	\$12.6
Insurance & Credit	\$13.5	98.4	\$5.8	\$12.4
Gas Service	\$13.6	161.0	\$6.5	\$10.3
Other Retail Trade	\$19.7	368.5	\$9.6	\$15.5
Wholesale Trade	\$13.0	83.4	\$5.6	\$9.9
Other Local Production of Goods	\$48.5	108.8	\$6.6	\$9.3
Total Direct Effects	\$199.6	2,166.4	\$66.6	\$108.8
Secondary Effects	\$325.0	2,312.3	\$103.1	\$176.3
Total Effects	\$524.6	4,478.7	\$169.7	\$285.1