

The Minnesota 1st Congressional District

Table 1. The Minnesota 1st Congressional District Description

Area (square miles)	13,322
Navigable Waterbody (square miles)	250
Total Population (2007)	634,302
Population Density (per square mile) (2007)	47
Persons 18+ (2007)	490,754
Number of Households (2007)	258,524

Table 2. Registered Boats Owned by Residents Residing in the Minnesota 1st Congressional District

	1st CD	State Total
Number of Registered Boats	61,053	688,292
Type of Registered Boats		
Power Boats	55,897	626,255
Outboards	47,736	536,893
Inboards	1,016	13,329
Stern Drives	6,912	73,175
Jet Boats	233	2,858
Personal Watercraft	4,084	45,108
Sailboats	1,072	16,929
Size of Registered Boats		
≤ 15'	23,933	272,023
16'-24'	35,874	398,946
25'-39'	1,107	15,781
40' +	139	1,542
Per Capita Ownership of Registered Boats		
All Population	96/1000	133/1000
Persons 18 +	124/1000	182/1000
Households	236/1000	334/1000

Table 3. Boating-related Businesses Based on NAICS Codes

Category	1st CD	State Total
Boat Building		
No. of Businesses	5	26
No. of Employees	310	1,693
Total Sales (\$ Millions)	\$49.4	\$197.8
Motors & Engines Mfg.		
No. of Businesses	-	1
No. of Employees	-	1
Total Sales (\$ Millions)	-	\$0.1
Accessories & Supplies Mfg.		
No. of Businesses	2	26
No. of Employees	10	307
Total Sales (\$ Millions)	\$0.7	\$75.8
Dealers & Wholesalers		
No. of Businesses	20	230
No. of Employees	114	1,464
Total Sales (\$ Millions)	\$16.7	\$311.4
Boating Services		
No. of Businesses	9	127
No. of Employees	28	536
Total Sales (\$ Millions)	\$1.8	\$37.7

Figure 1. Location of the Minnesota 1st Congressional District

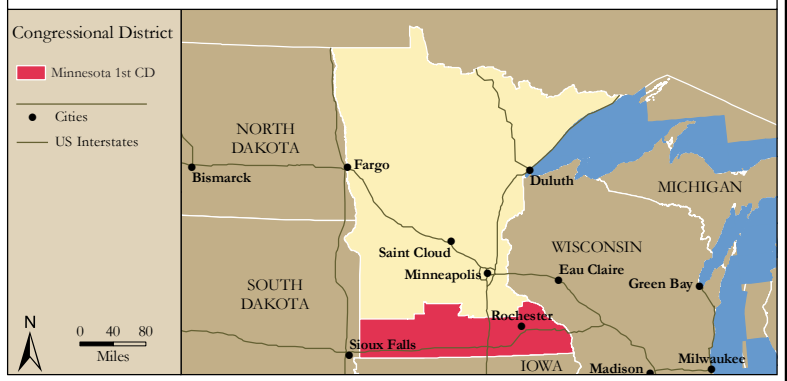


Figure 2. Navigable Waters of the Minnesota 1st Congressional District

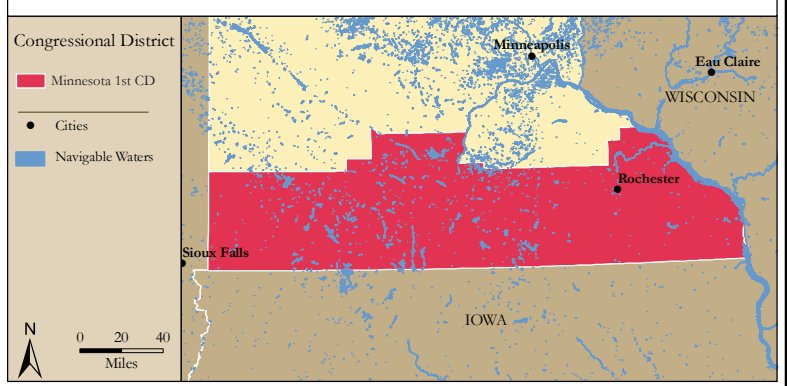


Figure 3. Number of Registered Boats by Zipcode within the Minnesota 1st Congressional District

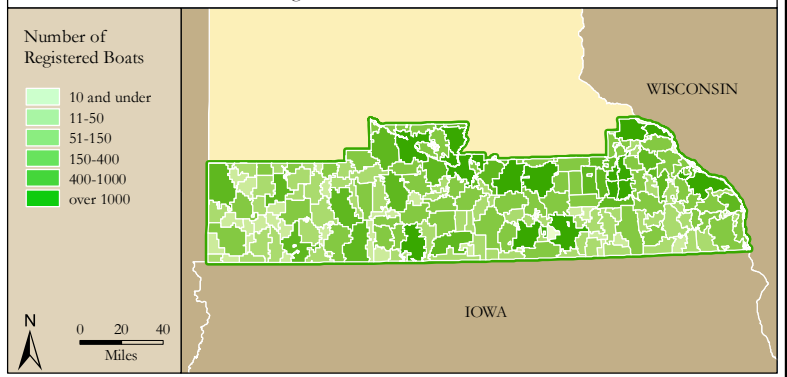
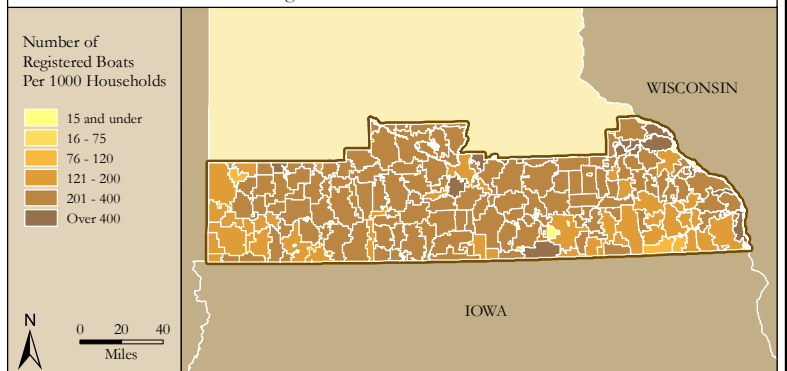


Figure 4. Per Capita (Household) Ownership of Registered Boats by Zipcode within the Minnesota 1st Congressional District



Economic Significance of Boating

Table 1. Craft and Trip Expenses by Power and Sailboats Registered in the Minnesota 1st Congressional District

Category	Boat Type and Size								Total
	Power <15'	Power 16' - 24'	Power 25' - 39'	Power 40'+	Sail <15'	Sail 16' - 24'	Sail 25' - 39'	Sail 40+	
Number of boats (Thousands of boats)	19.3	35.5	1.0	0.1	0.6	0.4	0.1	0.0	57.0
Annual craft spending (\$ per boat per year)	\$457.9	\$1,655.6	\$7,464.6	\$25,299.0	\$488.7	\$1,830.2	\$7,439.8	\$18,328.8	
Total craft spending (\$ Millions)	\$8.8	\$58.8	\$7.4	\$3.2	\$0.3	\$0.6	\$0.9	\$0.2	\$80.3
Total boat days (Thousands of days)	313.6	889.4	30.3	5.6	11.3	6.9	3.7	0.5	1,261.3
Total trip spending (\$ per boat per year)	\$935.9	\$2,148.4	\$4,574.4	\$8,039.6	\$1,009.7	\$1,009.7	\$1,963.9	\$5,204.7	
Total trip spending (\$ Millions)	\$18.0	\$76.3	\$4.5	\$1.0	\$0.6	\$0.4	\$0.2	\$0.1	\$101.1
Total craft & trip spending (\$ Millions)	\$26.8	\$135.1	\$11.9	\$4.3	\$0.9	\$1.0	\$1.1	\$0.3	\$181.4

Table 2. Total Spending on Boat Trips by Power and Sailboat Owners Registered in the Minnesota 1st CD

Category	Total (\$ Millions)	Percentage
Lodging	\$4.4	4%
Marina services	\$7.7	8%
Restaurant	\$18.1	18%
Groceries	\$18.7	18%
Boat fuel	\$22.8	23%
Auto fuel	\$19.6	19%
Repair & Maintenance	-	-
Marine supplies	-	-
Recreation & Entertainment	\$4.2	4%
Shopping	\$3.1	3%
Other services	-	-
Other goods	\$2.6	3%
Total	\$101.1	100%

Table 3. Total Annual Craft Spending (not including purchases of boats) by Power and Sailboat Owners Registered in the Minnesota 1st CD

Category	Total (\$ Millions)	Percentage
Slip	\$10.4	13%
Loan Payments	\$25.5	32%
Replacement Motors	\$1.2	2%
Replacement Trailers	\$0.3	0%
Insurance	\$7.5	9%
Repairs	\$16.0	20%
Accessories	\$15.9	20%
Taxes	\$3.5	4%
Total	\$80.3	100%

Table 4. Economic Significance of Trip Spending and Annual Craft Spending by Power and Sailboats Registered in the Minnesota 1st CD

	Trip Spending	Annual Craft Spending	Total
Direct Effects			
Sales (\$ Millions)	\$84.9	\$50.3	\$135.2
Jobs	884.7	576.5	1,461.2
Labor Income (\$ Millions)	\$25.6	\$19.5	\$45.0
Value Added (\$ Millions)	\$40.9	\$32.6	\$73.5
Total Effects			
Sales (\$ Millions)	\$228.2	\$127.4	\$355.6
Jobs	1,883.2	1,144.9	3,028.2
Labor Income (\$ Millions)	\$69.9	\$45.0	\$114.9
Value Added (\$ Millions)	\$118.0	\$75.1	\$193.1

Table 5. Economic Significance of Power and Sailboats Registered in the Minnesota 1st CD

Sector/Spending category	Sales (\$ Millions)	Jobs	Labor Income (\$Millions)	Value Added (\$Millions)
Direct Effects				
Lodging	\$4.4	54.2	\$1.7	\$3.1
Marina Services	\$18.1	232.2	\$6.3	\$11.4
Restaurant	\$18.1	359.5	\$6.2	\$8.7
Recreation & Entertainment	\$4.2	54.5	\$1.5	\$2.7
Repair & Maintenance	\$16.0	199.7	\$5.9	\$8.3
Insurance & Credit	\$9.2	66.6	\$3.9	\$8.4
Gas Service	\$9.4	112.2	\$4.5	\$7.2
Other Retail Trade	\$13.4	249.9	\$6.5	\$10.5
Wholesale Trade	\$9.0	57.4	\$3.8	\$6.8
Other Local Production of Goods	\$33.4	74.9	\$4.6	\$6.4
Total Direct Effects	\$135.2	1,461.2	\$45.0	\$73.5
Secondary Effects	\$220.4	1,567.0	\$69.9	\$119.5
Total Effects	\$355.6	3,028.2	\$114.9	\$193.1

The Minnesota 2nd Congressional District

Table 1. The Minnesota 2nd Congressional District Description

Area (square miles)	3,035
Navigable Waterbody (square miles)	165
Total Population (2007)	725,688
Population Density (per square mile) (2007)	230
Persons 18+ (2007)	536,927
Number of Households (2007)	265,234

Table 2. Registered Boats Owned by Residents Residing in the Minnesota 2nd Congressional District

	2nd CD	State Total
Number of Registered Boats	78,943	688,292
Type of Registered Boats		
Power Boats	70,486	626,255
Outboards	56,721	536,893
Inboards	1,999	13,329
Stern Drives	11,291	73,175
Jet Boats	475	2,858
Personal Watercraft	6,672	45,108
Sailboats	1,785	16,929

Size of Registered Boats		
≤ 15'	28,605	272,023
16'-24'	47,755	398,946
25'-39'	2,320	15,781
40' +	263	1,542

Per Capita Ownership of Registered Boats		
All Population	109/1000	133/1000
Persons 18 +	147/1000	182/1000
Households	298/1000	334/1000

Table 3. Boating-related Businesses Based on NAICS Codes

Category	2nd CD	State Total
Boat Building		
No. of Businesses	1	26
No. of Employees	3	1,693
Total Sales (\$ Millions)	\$0.1	\$197.8
Motors & Engines Mfg.		
No. of Businesses	-	1
No. of Employees	-	1
Total Sales (\$ Millions)	-	\$0.1
Accessories & Supplies Mfg.		
No. of Businesses	2	26
No. of Employees	7	307
Total Sales (\$ Millions)	\$0.9	\$75.8
Dealers & Wholesalers		
No. of Businesses	22	230
No. of Employees	175	1,464
Total Sales (\$ Millions)	\$65.9	\$311.4
Boating Services		
No. of Businesses	16	127
No. of Employees	49	536
Total Sales (\$ Millions)	\$3.5	\$37.7

Figure 1. Location of the Minnesota 2nd Congressional District

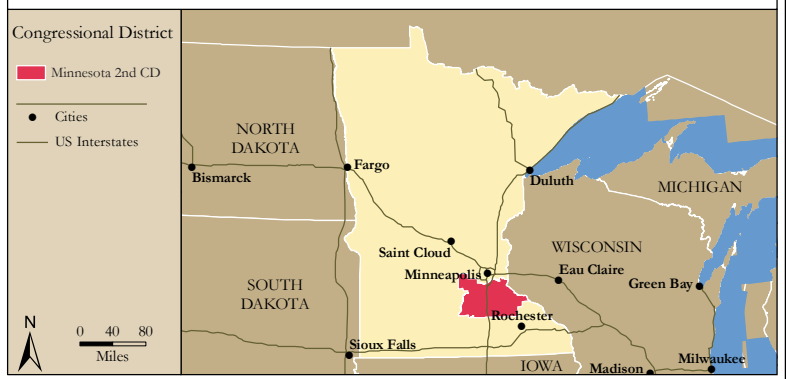


Figure 2. Navigable Waters of the Minnesota 2nd Congressional District

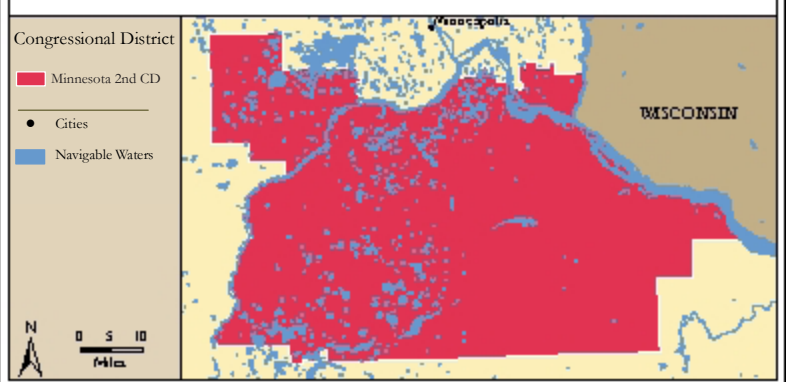


Figure 3. Number of Registered Boats by Zipcode within the Minnesota 2nd Congressional District

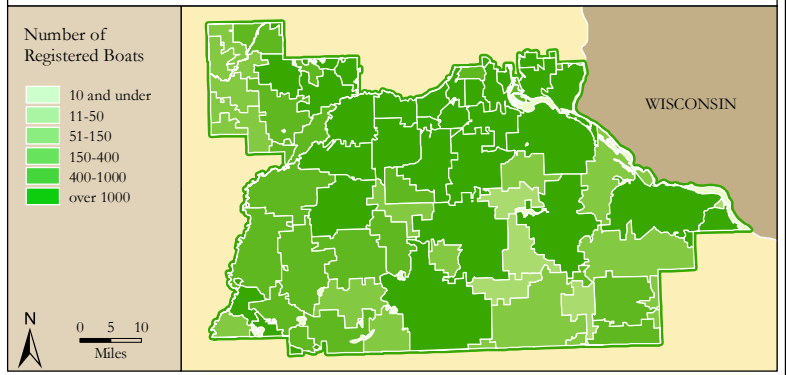
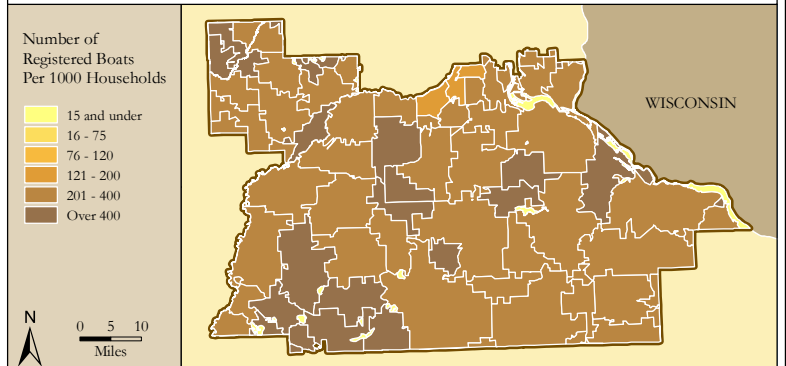


Figure 4. Per Capita (Household) Ownership of Registered Boats by Zipcode within the Minnesota 2nd Congressional District



Economic Significance of Boating

Table 1. Craft and Trip Expenses by Power and Sailboats Registered in the Minnesota 2nd Congressional District

Category	Boat Type and Size								Total
	Power <15'	Power 16' - 24'	Power 25' - 39'	Power 40'+	Sail <15'	Sail 16' - 24'	Sail 25' - 39'	Sail 40+	
Number of boats (Thousands of boats)	21.0	47.1	2.1	0.2	0.9	0.7	0.2	0.0	72.3
Annual craft spending (\$ per boat per year)	\$457.9	\$1,655.6	\$7,464.6	\$25,299.0	\$488.7	\$1,830.2	\$7,439.8	\$18,328.8	
Total craft spending (\$ Millions)	\$9.6	\$78.0	\$15.9	\$6.2	\$0.4	\$1.2	\$1.5	\$0.3	\$113.1
Total boat days (Thousands of days)	342.1	1,179.4	65.2	10.7	17.7	12.6	6.1	0.8	1,634.7
Total trip spending (\$ per boat per year)	\$935.9	\$2,148.4	\$4,574.4	\$8,039.6	\$1,009.7	\$1,009.7	\$1,963.9	\$5,204.7	
Total trip spending (\$ Millions)	\$19.7	\$101.2	\$9.7	\$2.0	\$0.9	\$0.7	\$0.4	\$0.1	\$134.6
Total craft & trip spending (\$ Millions)	\$29.3	\$179.2	\$25.6	\$8.2	\$1.4	\$1.9	\$1.8	\$0.4	\$247.7

Table 2. Total Spending on Boat Trips by Power and Sailboat Owners Registered in the Minnesota 2nd CD

Category	Total (\$ Millions)	Percentage
Lodging	\$5.7	4%
Marina services	\$10.4	8%
Restaurant	\$24.3	18%
Groceries	\$24.8	18%
Boat fuel	\$31.1	23%
Auto fuel	\$25.3	19%
Repair & Maintenance	-	-
Marine supplies	-	-
Recreation & Entertainment	\$5.5	4%
Shopping	\$4.0	3%
Other services	-	-
Other goods	\$3.4	3%
Total	\$134.6	100%

Table 3. Total Annual Craft Spending (not including purchases of boats) by Power and Sailboat Owners Registered in the Minnesota 2nd CD

Category	Total (\$ Millions)	Percentage
Slip	\$15.2	13%
Loan Payments	\$36.5	32%
Replacement Motors	\$1.6	1%
Replacement Trailers	\$0.4	0%
Insurance	\$10.4	9%
Repairs	\$22.4	20%
Accessories	\$21.8	19%
Taxes	\$4.8	4%
Total	\$113.1	100%

Table 4. Economic Significance of Trip Spending and Annual Craft Spending by Power and Sailboats Registered in the Minnesota 2nd CD

	Trip Spending	Annual Craft Spending	Total
Direct Effects			
Sales (\$ Millions)	\$113.5	\$70.5	\$184.0
Jobs	1,179.1	809.8	1,988.9
Labor Income (\$ Millions)	\$34.0	\$27.3	\$61.3
Value Added (\$ Millions)	\$54.5	\$45.7	\$100.2
Total Effects			
Sales (\$ Millions)	\$304.9	\$178.7	\$483.6
Jobs	2,511.4	1,607.4	4,118.8
Labor Income (\$ Millions)	\$93.2	\$63.1	\$156.3
Value Added (\$ Millions)	\$157.4	\$105.3	\$262.7

Table 5. Economic Significance of Power and Sailboats Registered in the Minnesota 2nd CD

Sector/Spending category	Sales (\$ Millions)	Jobs	Labor Income (\$Millions)	Value Added (\$Millions)
Direct Effects				
Lodging	\$5.7	71.0	\$2.3	\$4.1
Marina Services	\$25.5	328.0	\$8.9	\$16.1
Restaurant	\$24.3	481.9	\$8.3	\$11.7
Recreation & Entertainment	\$5.5	71.1	\$1.9	\$3.5
Repair & Maintenance	\$22.4	279.9	\$8.3	\$11.6
Insurance & Credit	\$12.8	92.7	\$5.5	\$11.7
Gas Service	\$12.6	149.5	\$6.0	\$9.6
Other Retail Trade	\$18.0	337.3	\$8.8	\$14.2
Wholesale Trade	\$12.0	77.0	\$5.2	\$9.1
Other Local Production of Goods	\$45.1	100.4	\$6.1	\$8.7
Total Direct Effects	\$184.0	1,988.9	\$61.3	\$100.2
Secondary Effects	\$299.6	2,129.9	\$95.0	\$162.5
Total Effects	\$483.6	4,118.8	\$156.3	\$262.7

The Minnesota 3rd Congressional District

Table 1. The Minnesota 3rd Congressional District Description

Area (square miles)	468
Navigable Waterbody (square miles)	59
Total Population (2007)	636,974
Population Density (per square mile) (2007)	1,241
Persons 18+ (2007)	475,539
Number of Households (2007)	247,968

Table 2. Registered Boats Owned by Residents Residing in the Minnesota 3rd Congressional District

	3rd CD	State Total
Number of Registered Boats	79,578	688,292
Type of Registered Boats		
Power Boats	68,125	626,255
Outboards	50,327	536,893
Inboards	3,027	13,329
Stern Drives	14,359	73,175
Jet Boats	412	2,858
Personal Watercraft	8,305	45,108
Sailboats	3,148	16,929
Size of Registered Boats		
≤ 15'	28,764	272,023
16'-24'	46,405	398,946
25'-39'	4,119	15,781
40' +	290	1,542
Per Capita Ownership of Registered Boats		
All Population	125/1000	133/1000
Persons 18 +	167/1000	182/1000
Households	321/1000	334/1000

Table 3. Boating-related Businesses Based on NAICS Codes

Category	3rd CD	State Total
Boat Building		
No. of Businesses	2	26
No. of Employees	-	1,693
Total Sales (\$ Millions)	-	\$197.8
Motors & Engines Mfg.		
No. of Businesses	-	1
No. of Employees	-	1
Total Sales (\$ Millions)	-	\$0.1
Accessories & Supplies Mfg.		
No. of Businesses	4	26
No. of Employees	39	307
Total Sales (\$ Millions)	\$2.1	\$75.8
Dealers & Wholesalers		
No. of Businesses	28	230
No. of Employees	220	1,464
Total Sales (\$ Millions)	\$40.3	\$311.4
Boating Services		
No. of Businesses	17	127
No. of Employees	107	536
Total Sales (\$ Millions)	\$4.6	\$37.7

Figure 1. Location of the Minnesota 3rd Congressional District



Figure 2. Navigable Waters of the Minnesota 3rd Congressional District

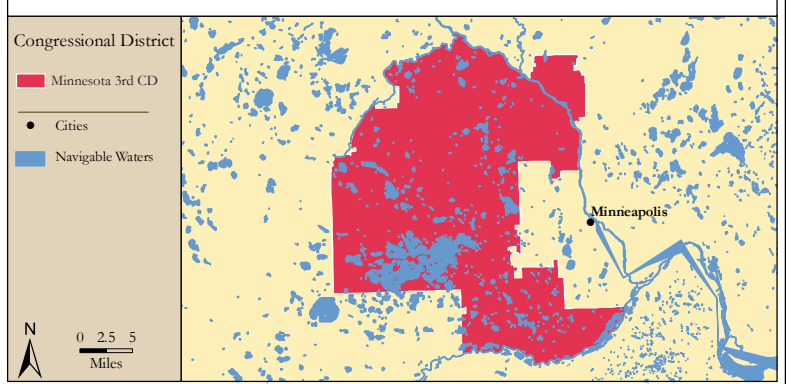


Figure 3. Number of Registered Boats by Zipcode within the Minnesota 3rd Congressional District

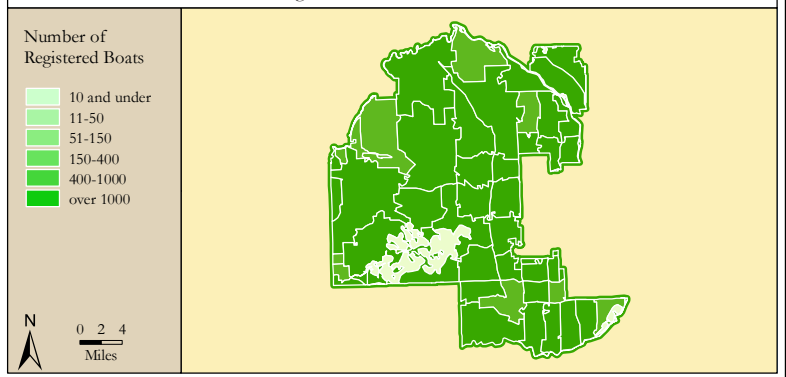
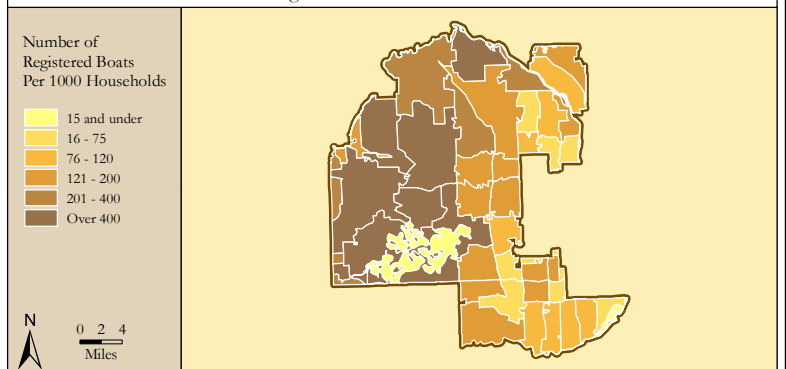


Figure 4. Per Capita (Household) Ownership of Registered Boats by Zipcode within the Minnesota 3rd Congressional District



Economic Significance of Boating

Table 1. Craft and Trip Expenses by Power and Sailboats Registered in the Minnesota 3rd Congressional District

Category	Boat Type and Size								Total
	Power <15'	Power 16' - 24'	Power 25' - 39'	Power 40'+	Sail <15'	Sail 16' - 24'	Sail 25' - 39'	Sail 40+	
Number of boats (Thousands of boats)	18.9	45.2	3.8	0.3	1.6	1.2	0.3	0.0	71.3
Annual craft spending (\$ per boat per year)	\$457.9	\$1,655.6	\$7,464.6	\$25,299.0	\$488.7	\$1,830.2	\$7,439.8	\$18,328.8	
Total craft spending (\$ Millions)	\$8.6	\$74.9	\$28.2	\$6.4	\$0.8	\$2.2	\$2.6	\$0.7	\$124.3
Total boat days (Thousands of days)	307.5	1,132.1	115.8	11.0	30.3	23.0	10.8	1.7	1,632.3
Total trip spending (\$ per boat per year)	\$935.9	\$2,148.4	\$4,574.4	\$8,039.6	\$1,009.7	\$1,009.7	\$1,963.9	\$5,204.7	
Total trip spending (\$ Millions)	\$17.7	\$97.1	\$17.3	\$2.0	\$1.6	\$1.2	\$0.7	\$0.2	\$137.8
Total craft & trip spending (\$ Millions)	\$26.3	\$172.0	\$45.4	\$8.4	\$2.4	\$3.4	\$3.2	\$0.9	\$262.0

Table 2. Total Spending on Boat Trips by Power and Sailboat Owners Registered in the Minnesota 3rd CD

Category	Total (\$ Millions)	Percentage
Lodging	\$5.6	4%
Marina services	\$11.0	8%
Restaurant	\$25.3	18%
Groceries	\$25.1	18%
Boat fuel	\$32.8	24%
Auto fuel	\$24.9	18%
Repair & Maintenance	-	-
Marine supplies	-	-
Recreation & Entertainment	\$5.6	4%
Shopping	\$4.1	3%
Other services	-	-
Other goods	\$3.5	3%
Total	\$137.8	100%

Table 3. Total Annual Craft Spending (not including purchases of boats) by Power and Sailboat Owners Registered in the Minnesota 3rd CD

Category	Total (\$ Millions)	Percentage
Slip	\$17.6	14%
Loan Payments	\$40.3	32%
Replacement Motors	\$1.6	1%
Replacement Trailers	\$0.4	0%
Insurance	\$11.2	9%
Repairs	\$24.5	20%
Accessories	\$23.5	19%
Taxes	\$5.1	4%
Total	\$124.3	100%

Table 4. Economic Significance of Trip Spending and Annual Craft Spending by Power and Sailboats Registered in the Minnesota 3rd CD

	Trip Spending	Annual Craft Spending	Total
Direct Effects			
Sales (\$ Millions)	\$116.8	\$77.6	\$194.4
Jobs	1,212.5	893.3	2,105.8
Labor Income (\$ Millions)	\$34.9	\$30.0	\$64.9
Value Added (\$ Millions)	\$55.9	\$50.2	\$106.1
Total Effects			
Sales (\$ Millions)	\$313.8	\$196.6	\$510.4
Jobs	2,581.8	1,771.8	4,353.6
Labor Income (\$ Millions)	\$95.8	\$69.4	\$165.2
Value Added (\$ Millions)	\$161.8	\$115.8	\$277.6

Table 5. Economic Significance of Power and Sailboats Registered in the Minnesota 3rd CD

Sector/Spending category	Sales (\$ Millions)	Jobs	Labor Income (\$Millions)	Value Added (\$Millions)
Direct Effects				
Lodging	\$5.6	69.7	\$2.2	\$4.0
Marina Services	\$28.6	367.3	\$10.0	\$18.0
Restaurant	\$25.3	501.1	\$8.6	\$12.1
Recreation & Entertainment	\$5.6	71.5	\$1.9	\$3.5
Repair & Maintenance	\$24.5	306.7	\$9.1	\$12.8
Insurance & Credit	\$13.8	100.0	\$5.9	\$12.6
Gas Service	\$12.9	152.7	\$6.2	\$9.8
Other Retail Trade	\$18.8	353.2	\$9.2	\$14.8
Wholesale Trade	\$12.4	79.7	\$5.4	\$9.5
Other Local Production of Goods	\$46.9	103.9	\$6.4	\$9.0
Total Direct Effects	\$194.4	2,105.8	\$64.9	\$106.1
Secondary Effects	\$316.0	2,247.8	\$100.3	\$171.5
Total Effects	\$510.4	4,353.6	\$165.2	\$277.6

The Minnesota 4th Congressional District

Table 1. The Minnesota 4th Congressional District Description

Area (square miles)	202
Navigable Waterbody (square miles)	21
Total Population (2007)	600,606
Population Density (per square mile) (2007)	2,733
Persons 18+ (2007)	454,889
Number of Households (2007)	241,183

Table 2. Registered Boats Owned by Residents Residing in the Minnesota 4th Congressional District

	4th CD	State Total
Number of Registered Boats	52,146	688,292
Type of Registered Boats		
Power Boats	46,473	626,255
Outboards	39,209	536,893
Inboards	1,271	13,329
Stern Drives	5,725	73,175
Jet Boats	268	2,858
Personal Watercraft	3,187	45,108
Sailboats	2,486	16,929
Size of Registered Boats		
≤ 15'	21,047	272,023
16'-24'	29,334	398,946
25'-39'	1,528	15,781
40' +	237	1,542
Per Capita Ownership of Registered Boats		
All Population	87/1000	133/1000
Persons 18 +	115/1000	182/1000
Households	216/1000	334/1000

Table 3. Boating-related Businesses Based on NAICS Codes

Category	4th CD	State Total
Boat Building		
No. of Businesses	3	26
No. of Employees	13	1,693
Total Sales (\$ Millions)	\$1.0	\$197.8
Motors & Engines Mfg.		
No. of Businesses	-	1
No. of Employees	-	1
Total Sales (\$ Millions)	-	\$0.1
Accessories & Supplies Mfg.		
No. of Businesses	-	26
No. of Employees	-	307
Total Sales (\$ Millions)	-	\$75.8
Dealers & Wholesalers		
No. of Businesses	9	230
No. of Employees	50	1,464
Total Sales (\$ Millions)	\$9.5	\$311.4
Boating Services		
No. of Businesses	8	127
No. of Employees	37	536
Total Sales (\$ Millions)	\$2.8	\$37.7

Figure 1. Location of the Minnesota 4th Congressional District

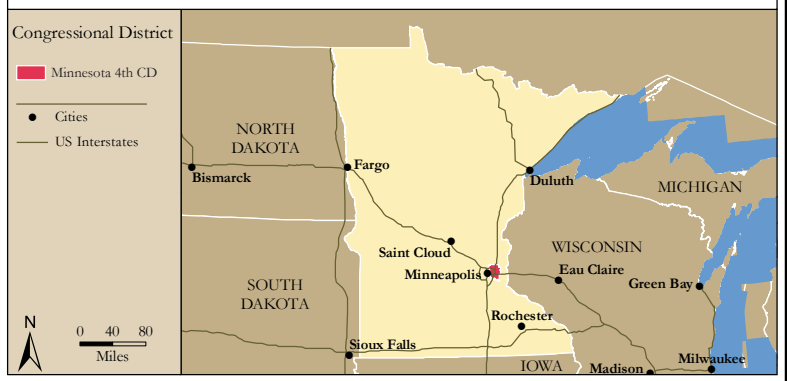


Figure 2. Navigable Waters of the Minnesota 4th Congressional District

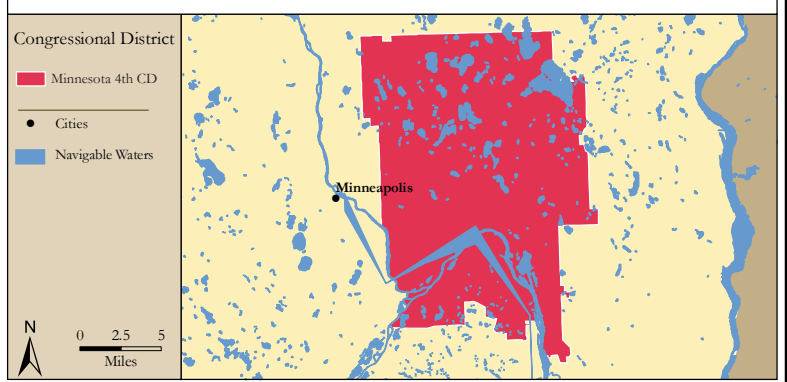


Figure 3. Number of Registered Boats by Zipcode within the Minnesota 4th Congressional District

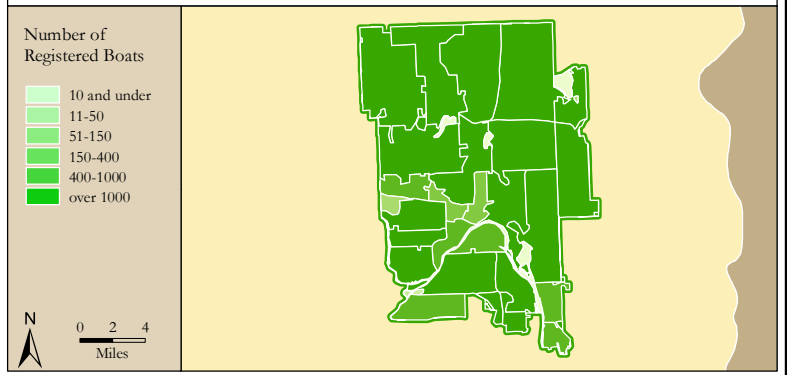
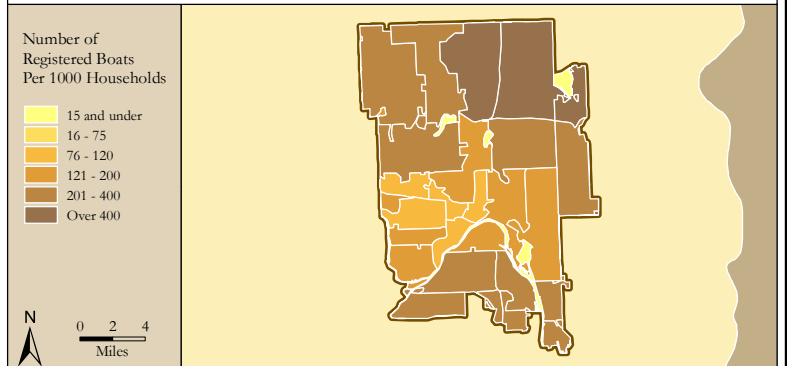


Figure 4. Per Capita (Household) Ownership of Registered Boats by Zipcode within the Minnesota 4th Congressional District



Economic Significance of Boating

Table 1. Craft and Trip Expenses by Power and Sailboats Registered in the Minnesota 4th Congressional District

Category	Boat Type and Size								Total
	Power <15'	Power 16' - 24'	Power 25' - 39'	Power 40'+	Sail <15'	Sail 16' - 24'	Sail 25' - 39'	Sail 40+	
Number of boats (Thousands of boats)	16.5	28.5	1.3	0.2	1.3	0.9	0.3	0.0	49.0
Annual craft spending (\$ per boat per year)	\$457.9	\$1,655.6	\$7,464.6	\$25,299.0	\$488.7	\$1,830.2	\$7,439.8	\$18,328.8	
Total craft spending (\$ Millions)	\$7.6	\$47.1	\$9.5	\$5.5	\$0.7	\$1.6	\$1.9	\$0.3	\$74.2
Total boat days (Thousands of days)	269.0	712.8	38.8	9.5	25.8	16.8	8.2	0.9	1,081.8
Total trip spending (\$ per boat per year)	\$935.9	\$2,148.4	\$4,574.4	\$8,039.6	\$1,009.7	\$1,009.7	\$1,963.9	\$5,204.7	
Total trip spending (\$ Millions)	\$15.5	\$61.2	\$5.8	\$1.8	\$1.3	\$0.9	\$0.5	\$0.1	\$87.0
Total craft & trip spending (\$ Millions)	\$23.0	\$108.3	\$15.2	\$7.3	\$2.0	\$2.5	\$2.5	\$0.4	\$161.2

Table 2. Total Spending on Boat Trips by Power and Sailboat Owners Registered in the Minnesota 4th CD

Category	Total (\$ Millions)	Percentage
Lodging	\$3.6	4%
Marina services	\$6.8	8%
Restaurant	\$15.9	18%
Groceries	\$16.0	18%
Boat fuel	\$19.7	23%
Auto fuel	\$16.4	19%
Repair & Maintenance	-	-
Marine supplies	-	-
Recreation & Entertainment	\$3.6	4%
Shopping	\$2.7	3%
Other services	-	-
Other goods	\$2.2	3%
Total	\$87.0	100%

Table 3. Total Annual Craft Spending (not including purchases of boats) by Power and Sailboat Owners Registered in the Minnesota 4th CD

Category	Total (\$ Millions)	Percentage
Slip	\$10.3	14%
Loan Payments	\$23.4	32%
Replacement Motors	\$1.0	1%
Replacement Trailers	\$0.2	0%
Insurance	\$6.8	9%
Repairs	\$14.8	20%
Accessories	\$14.5	20%
Taxes	\$3.2	4%
Total	\$74.2	100%

Table 4. Economic Significance of Trip Spending and Annual Craft Spending by Power and Sailboats Registered in the Minnesota 4th CD

	Trip Spending	Annual Craft Spending	Total
Direct Effects			
Sales (\$ Millions)	\$73.4	\$46.8	\$120.1
Jobs	766.8	537.8	1,304.6
Labor Income (\$ Millions)	\$22.1	\$18.1	\$40.1
Value Added (\$ Millions)	\$35.3	\$30.3	\$65.6
Total Effects			
Sales (\$ Millions)	\$197.2	\$118.5	\$315.7
Jobs	1,629.7	1,067.0	2,696.7
Labor Income (\$ Millions)	\$60.4	\$41.8	\$102.2
Value Added (\$ Millions)	\$101.9	\$69.8	\$171.7

Table 5. Economic Significance of Power and Sailboats Registered in the Minnesota 4th CD

Sector/Spending category	Sales (\$ Millions)	Jobs	Labor Income (\$Millions)	Value Added (\$Millions)
Direct Effects				
Lodging	\$3.6	45.2	\$1.5	\$2.6
Marina Services	\$17.1	219.4	\$6.0	\$10.8
Restaurant	\$15.9	315.0	\$5.4	\$7.6
Recreation & Entertainment	\$3.6	46.7	\$1.3	\$2.3
Repair & Maintenance	\$14.8	184.3	\$5.5	\$7.7
Insurance & Credit	\$8.4	60.7	\$3.6	\$7.7
Gas Service	\$8.1	95.6	\$3.9	\$6.1
Other Retail Trade	\$11.9	222.1	\$5.8	\$9.3
Wholesale Trade	\$7.8	50.0	\$3.4	\$5.9
Other Local Production of Goods	\$29.0	65.6	\$4.0	\$5.6
Total Direct Effects	\$120.1	1,304.6	\$40.1	\$65.6
Secondary Effects	\$195.6	1,392.1	\$62.1	\$106.1
Total Effects	\$315.7	2,696.7	\$102.2	\$171.7

The Minnesota 5th Congressional District

Table 1. The Minnesota 5th Congressional District Description

Area (square miles)	124
Navigable Waterbody (square miles)	6
Total Population (2007)	607,861
Population Density (per square mile) (2007)	4,690
Persons 18+ (2007)	479,835
Number of Households (2007)	263,361

Table 2. Registered Boats Owned by Residents Residing in the Minnesota 5th Congressional District

	5th CD	State Total
Number of Registered Boats	33,148	688,292
Type of Registered Boats		
Power Boats	29,432	626,255
Outboards	24,812	536,893
Inboards	834	13,329
Stern Drives	3,658	73,175
Jet Boats	128	2,858
Personal Watercraft	1,686	45,108
Sailboats	2,030	16,929
Size of Registered Boats		
≤ 15'	13,911	272,023
16'-24'	18,108	398,946
25'-39'	959	15,781
40' +	170	1,542
Per Capita Ownership of Registered Boats		
All Population	55/1000	133/1000
Persons 18 +	69/1000	182/1000
Households	126/1000	334/1000

Table 3. Boating-related Businesses Based on NAICS Codes

Category	5th CD	State Total
Boat Building		
No. of Businesses	1	26
No. of Employees	2	1,693
Total Sales (\$ Millions)	\$0.1	\$197.8
Motors & Engines Mfg.		
No. of Businesses	-	1
No. of Employees	-	1
Total Sales (\$ Millions)	-	\$0.1
Accessories & Supplies Mfg.		
No. of Businesses	1	26
No. of Employees	2	307
Total Sales (\$ Millions)	\$0.1	\$75.8
Dealers & Wholesalers		
No. of Businesses	10	230
No. of Employees	69	1,464
Total Sales (\$ Millions)	\$19.6	\$311.4
Boating Services		
No. of Businesses	3	127
No. of Employees	4	536
Total Sales (\$ Millions)	\$0.2	\$37.7

Figure 1. Location of the Minnesota 5th Congressional District



Figure 2. Navigable Waters of the Minnesota 5th Congressional District

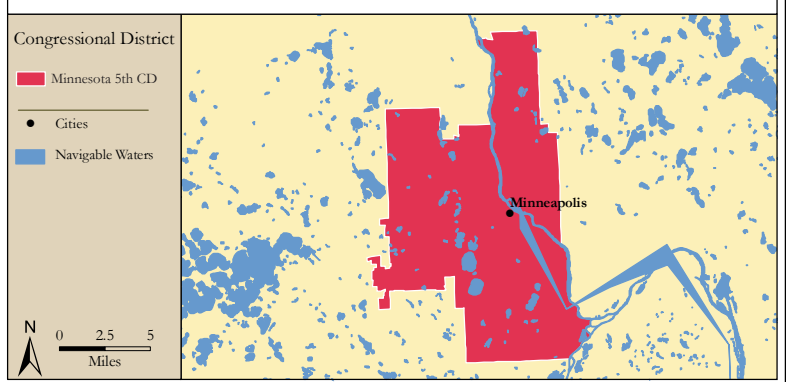


Figure 3. Number of Registered Boats by Zipcode within the Minnesota 5th Congressional District

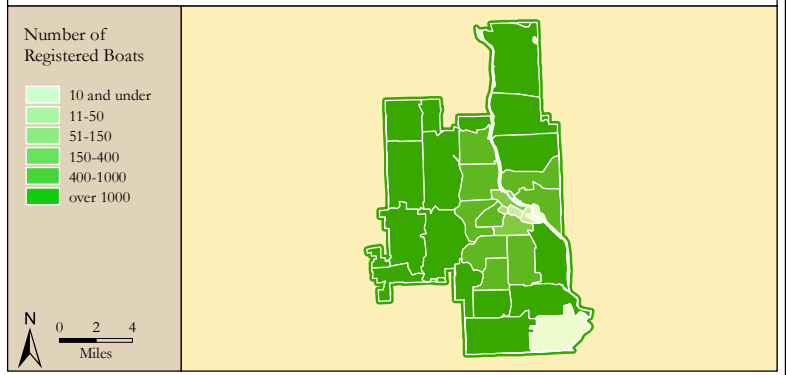
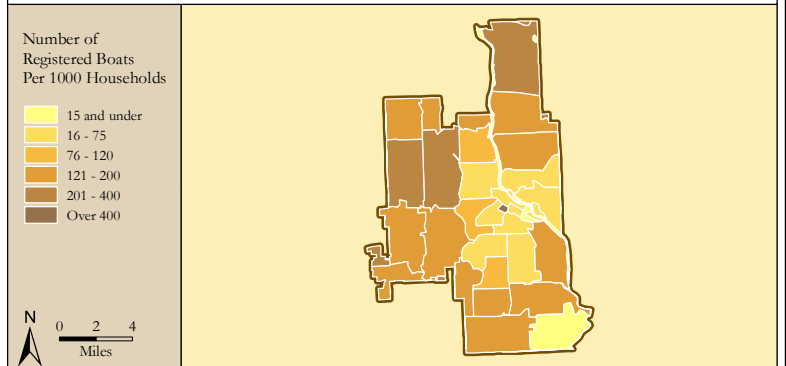


Figure 4. Per Capita (Household) Ownership of Registered Boats by Zipcode within the Minnesota 5th Congressional District



Economic Significance of Boating

Table 1. Craft and Trip Expenses by Power and Sailboats Registered in the Minnesota 5th Congressional District

Category	Boat Type and Size								Total
	Power <15'	Power 16' - 24'	Power 25' - 39'	Power 40'+	Sail <15'	Sail 16' - 24'	Sail 25' - 39'	Sail 40+	
Number of boats (Thousands of boats)	11.2	17.3	0.8	0.1	1.0	0.8	0.2	0.0	31.5
Annual craft spending (\$ per boat per year)	\$457.9	\$1,655.6	\$7,464.6	\$25,299.0	\$488.7	\$1,830.2	\$7,439.8	\$18,328.8	
Total craft spending (\$ Millions)	\$5.1	\$28.7	\$5.7	\$3.7	\$0.5	\$1.5	\$1.5	\$0.4	\$47.0
Total boat days (Thousands of days)	182.6	433.3	23.4	6.3	19.5	15.5	6.1	1.1	687.9
Total trip spending (\$ per boat per year)	\$935.9	\$2,148.4	\$4,574.4	\$8,039.6	\$1,009.7	\$1,009.7	\$1,963.9	\$5,204.7	
Total trip spending (\$ Millions)	\$10.5	\$37.2	\$3.5	\$1.2	\$1.0	\$0.8	\$0.4	\$0.1	\$54.7
Total craft & trip spending (\$ Millions)	\$15.6	\$65.8	\$9.2	\$4.9	\$1.5	\$2.3	\$1.8	\$0.6	\$101.7

Table 2. Total Spending on Boat Trips by Power and Sailboat Owners Registered in the Minnesota 5th CD

Category	Total (\$ Millions)	Percentage
Lodging	\$2.3	4%
Marina services	\$4.3	8%
Restaurant	\$10.1	18%
Groceries	\$10.0	18%
Boat fuel	\$12.2	22%
Auto fuel	\$10.3	19%
Repair & Maintenance	-	-
Marine supplies	-	-
Recreation & Entertainment	\$2.3	4%
Shopping	\$1.7	3%
Other services	-	-
Other goods	\$1.4	3%
Total	\$54.7	100%

Table 3. Total Annual Craft Spending (not including purchases of boats) by Power and Sailboat Owners Registered in the Minnesota 5th CD

Category	Total (\$ Millions)	Percentage
Slip	\$6.6	14%
Loan Payments	\$14.6	31%
Replacement Motors	\$0.6	1%
Replacement Trailers	\$0.2	0%
Insurance	\$4.3	9%
Repairs	\$9.4	20%
Accessories	\$9.3	20%
Taxes	\$2.0	4%
Total	\$47.0	100%

Table 4. Economic Significance of Trip Spending and Annual Craft Spending by Power and Sailboats Registered in the Minnesota 5th CD

	Trip Spending	Annual Craft Spending	Total
Direct Effects			
Sales (\$ Millions)	\$46.1	\$29.8	\$75.9
Jobs	483.6	343.6	827.1
Labor Income (\$ Millions)	\$13.9	\$11.5	\$25.4
Value Added (\$ Millions)	\$22.2	\$19.3	\$41.5
Total Effects			
Sales (\$ Millions)	\$124.0	\$75.6	\$199.6
Jobs	1,026.6	681.3	1,707.9
Labor Income (\$ Millions)	\$38.0	\$26.7	\$64.7
Value Added (\$ Millions)	\$64.1	\$44.5	\$108.6

Table 5. Economic Significance of Power and Sailboats Registered in the Minnesota 5th CD

Sector/Spending category	Sales (\$ Millions)	Jobs	Labor Income (\$Millions)	Value Added (\$Millions)
Direct Effects				
Lodging	\$2.3	28.2	\$0.9	\$1.6
Marina Services	\$10.9	140.5	\$3.8	\$6.9
Restaurant	\$10.1	199.3	\$3.4	\$4.8
Recreation & Entertainment	\$2.3	29.6	\$0.8	\$1.5
Repair & Maintenance	\$9.4	117.1	\$3.5	\$4.9
Insurance & Credit	\$5.3	38.4	\$2.3	\$4.8
Gas Service	\$5.0	59.8	\$2.4	\$3.8
Other Retail Trade	\$7.5	141.1	\$3.7	\$5.9
Wholesale Trade	\$4.9	31.6	\$2.1	\$3.7
Other Local Production of Goods	\$18.2	41.5	\$2.5	\$3.5
Total Direct Effects	\$75.9	827.1	\$25.4	\$41.5
Secondary Effects	\$123.7	880.8	\$39.3	\$67.1
Total Effects	\$199.6	1,707.9	\$64.7	\$108.6

The Minnesota 6th Congressional District

Table 1. The Minnesota 6th Congressional District Description

Area (square miles)	3,081
Navigable Waterbody (square miles)	277
Total Population (2007)	734,639
Population Density (per square mile) (2007)	227
Persons 18+ (2007)	547,787
Number of Households (2007)	263,231

Table 2. Registered Boats Owned by Residents Residing in the Minnesota 6th Congressional District

	6th CD	State Total
Number of Registered Boats	114,714	688,292
Type of Registered Boats		
Power Boats	104,299	626,255
Outboards	89,952	536,893
Inboards	2,005	13,329
Stern Drives	11,746	73,175
Jet Boats	596	2,858
Personal Watercraft	8,170	45,108
Sailboats	2,245	16,929

Size of Registered Boats		
≤ 15'	43,634	272,023
16'-24'	68,493	398,946
25'-39'	2,356	15,781
40' +	231	1,542

Per Capita Ownership of Registered Boats		
All Population	156/1000	133/1000
Persons 18 +	209/1000	182/1000
Households	436/1000	334/1000

Table 3. Boating-related Businesses Based on NAICS Codes

Category	6th CD	State Total
Boat Building		
No. of Businesses	6	26
No. of Employees	132	1,693
Total Sales (\$ Millions)	\$32.2	\$197.8
Motors & Engines Mfg.		
No. of Businesses	-	1
No. of Employees	-	1
Total Sales (\$ Millions)	-	\$0.1
Accessories & Supplies Mfg.		
No. of Businesses	4	26
No. of Employees	7	307
Total Sales (\$ Millions)	\$0.4	\$75.8
Dealers & Wholesalers		
No. of Businesses	38	230
No. of Employees	261	1,464
Total Sales (\$ Millions)	\$46.5	\$311.4
Boating Services		
No. of Businesses	22	127
No. of Employees	123	536
Total Sales (\$ Millions)	\$10.5	\$37.7

Figure 1. Location of the Minnesota 6th Congressional District

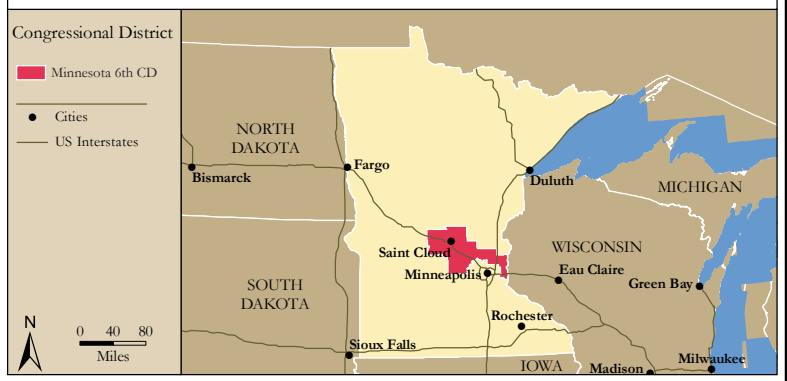


Figure 2. Navigable Waters of the Minnesota 6th Congressional District

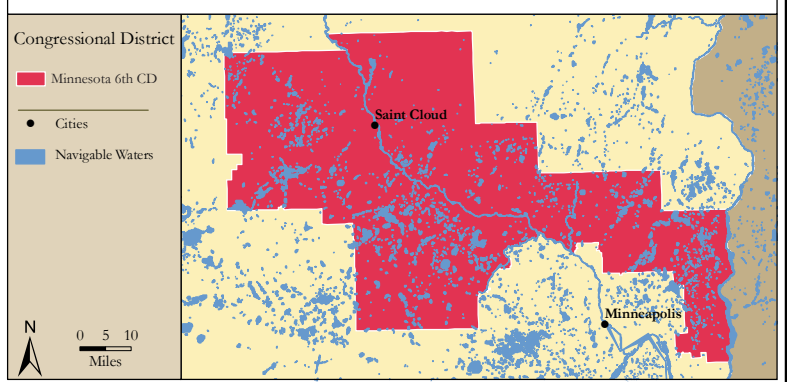


Figure 3. Number of Registered Boats by Zipcode within the Minnesota 6th Congressional District

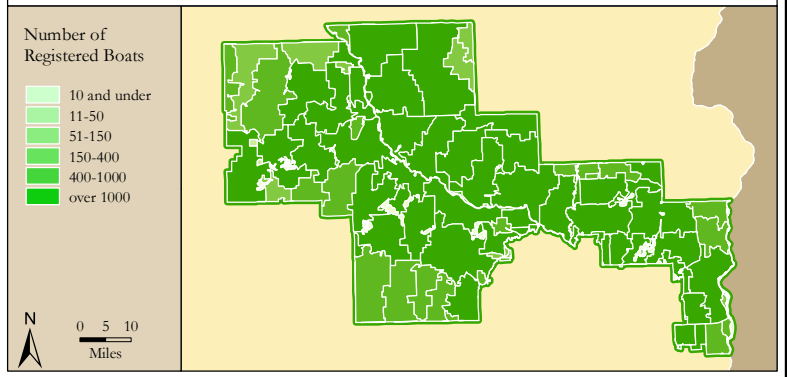
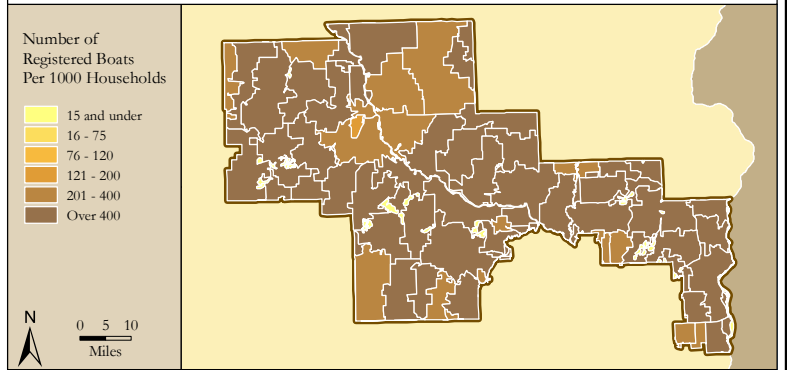


Figure 4. Per Capita (Household) Ownership of Registered Boats by Zipcode within the Minnesota 6th Congressional District



Economic Significance of Boating

Table 1. Craft and Trip Expenses by Power and Sailboats Registered in the Minnesota 6th Congressional District

Category	Boat Type and Size								Total
	Power <15'	Power 16' - 24'	Power 25' - 39'	Power 40'+	Sail <15'	Sail 16' - 24'	Sail 25' - 39'	Sail 40+	
Number of boats (Thousands of boats)	34.3	67.7	2.2	0.2	1.2	0.8	0.2	0.0	106.5
Annual craft spending (\$ per boat per year)	\$457.9	\$1,655.6	\$7,464.6	\$25,299.0	\$488.7	\$1,830.2	\$7,439.8	\$18,328.8	
Total craft spending (\$ Millions)	\$15.7	\$112.0	\$16.1	\$5.4	\$0.6	\$1.5	\$1.5	\$0.3	\$153.1
Total boat days (Thousands of days)	558.0	1,694.2	66.1	9.2	23.0	16.1	6.3	0.9	2,373.8
Total trip spending (\$ per boat per year)	\$935.9	\$2,148.4	\$4,574.4	\$8,039.6	\$1,009.7	\$1,009.7	\$1,963.9	\$5,204.7	
Total trip spending (\$ Millions)	\$32.1	\$145.4	\$9.9	\$1.7	\$1.2	\$0.8	\$0.4	\$0.1	\$191.5
Total craft & trip spending (\$ Millions)	\$47.8	\$257.4	\$26.0	\$7.1	\$1.8	\$2.4	\$1.9	\$0.4	\$344.7

Table 2. Total Spending on Boat Trips by Power and Sailboat Owners Registered in the Minnesota 6th CD

Category	Total (\$ Millions)	Percentage
Lodging	\$8.3	4%
Marina services	\$14.5	8%
Restaurant	\$34.4	18%
Groceries	\$35.4	18%
Boat fuel	\$43.4	23%
Auto fuel	\$36.9	19%
Repair & Maintenance	-	-
Marine supplies	-	-
Recreation & Entertainment	\$8.0	4%
Shopping	\$5.8	3%
Other services	-	-
Other goods	\$4.9	3%
Total	\$191.5	100%

Table 3. Total Annual Craft Spending (not including purchases of boats) by Power and Sailboat Owners Registered in the Minnesota 6th CD

Category	Total (\$ Millions)	Percentage
Slip	\$19.9	13%
Loan Payments	\$48.8	32%
Replacement Motors	\$2.3	1%
Replacement Trailers	\$0.5	0%
Insurance	\$14.3	9%
Repairs	\$30.5	20%
Accessories	\$30.2	20%
Taxes	\$6.6	4%
Total	\$153.1	100%

Table 4. Economic Significance of Trip Spending and Annual Craft Spending by Power and Sailboats Registered in the Minnesota 6th CD

	Trip Spending	Annual Craft Spending	Total
Direct Effects			
Sales (\$ Millions)	\$161.0	\$95.9	\$256.8
Jobs	1,675.7	1,099.0	2,774.6
Labor Income (\$ Millions)	\$48.4	\$37.1	\$85.5
Value Added (\$ Millions)	\$77.5	\$62.1	\$139.6
Total Effects			
Sales (\$ Millions)	\$432.5	\$242.9	\$675.4
Jobs	3,567.6	2,182.4	5,750.0
Labor Income (\$ Millions)	\$132.4	\$85.8	\$218.2
Value Added (\$ Millions)	\$223.5	\$143.1	\$366.6

Table 5. Economic Significance of Power and Sailboats Registered in the Minnesota 6th CD

Sector/Spending category	Sales (\$ Millions)	Jobs	Labor Income (\$Millions)	Value Added (\$Millions)
Direct Effects				
Lodging	\$8.3	102.7	\$3.3	\$5.9
Marina Services	\$34.5	442.9	\$12.1	\$21.7
Restaurant	\$34.4	682.0	\$11.7	\$16.5
Recreation & Entertainment	\$8.0	102.7	\$2.8	\$5.0
Repair & Maintenance	\$30.5	380.4	\$11.3	\$15.8
Insurance & Credit	\$17.5	126.8	\$7.5	\$16.0
Gas Service	\$17.9	212.7	\$8.6	\$13.6
Other Retail Trade	\$25.4	473.9	\$12.3	\$19.9
Wholesale Trade	\$17.0	108.7	\$7.3	\$12.9
Other Local Production of Goods	\$63.5	142.0	\$8.7	\$12.2
Total Direct Effects	\$256.8	2,774.6	\$85.5	\$139.6
Secondary Effects	\$418.5	2,975.3	\$132.7	\$227.0
Total Effects	\$675.4	5,750.0	\$218.2	\$366.6

The Minnesota 7th Congressional District

Table 1. The Minnesota 7th Congressional District Description

Area (square miles)	31,796
Navigable Waterbody (square miles)	4,944
Total Population (2007)	622,767
Population Density (per square mile) (2007)	18
Persons 18+ (2007)	483,460
Number of Households (2007)	257,188

Table 2. Registered Boats Owned by Residents Residing in the Minnesota 7th Congressional District

	7th CD	State Total
Number of Registered Boats	109,033	688,292
Type of Registered Boats		
Power Boats	100,406	626,255
Outboards	90,370	536,893
Inboards	1,245	13,329
Stern Drives	8,456	73,175
Jet Boats	335	2,858
Personal Watercraft	6,889	45,108
Sailboats	1,738	16,929

Size of Registered Boats

Size	7th CD	State Total
≤ 15'	44,438	272,023
16'-24'	63,554	398,946
25'-39'	1,005	15,781
40' +	36	1,542

Per Capita Ownership of Registered Boats

Category	7th CD	State Total
All Population	175/1000	133/1000
Persons 18 +	226/1000	182/1000
Households	424/1000	334/1000

Table 3. Boating-related Businesses Based on NAICS Codes

Category	7th CD	State Total
Boat Building		
No. of Businesses	2	26
No. of Employees	2	1,693
Total Sales (\$ Millions)	\$0.1	\$197.8
Motors & Engines Mfg.		
No. of Businesses	1	1
No. of Employees	1	1
Total Sales (\$ Millions)	\$0.1	\$0.1
Accessories & Supplies Mfg.		
No. of Businesses	4	26
No. of Employees	147	307
Total Sales (\$ Millions)	\$62.1	\$75.8
Dealers & Wholesalers		
No. of Businesses	24	230
No. of Employees	146	1,464
Total Sales (\$ Millions)	\$31.2	\$311.4
Boating Services		
No. of Businesses	7	127
No. of Employees	50	536
Total Sales (\$ Millions)	\$6.5	\$37.7

Figure 1. Location of the Minnesota 7th Congressional District

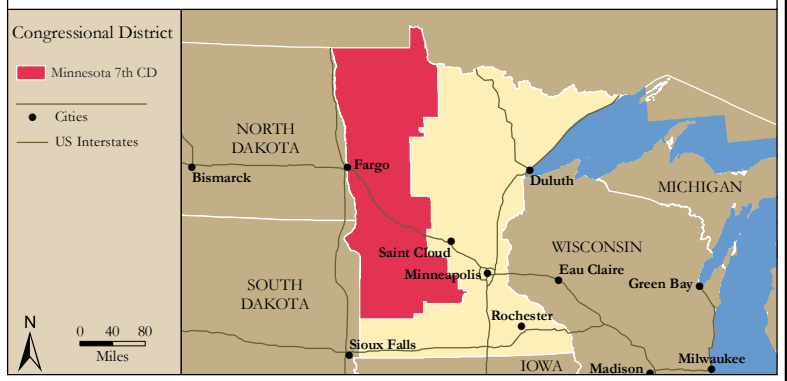


Figure 2. Navigable Waters of the Minnesota 7th Congressional District

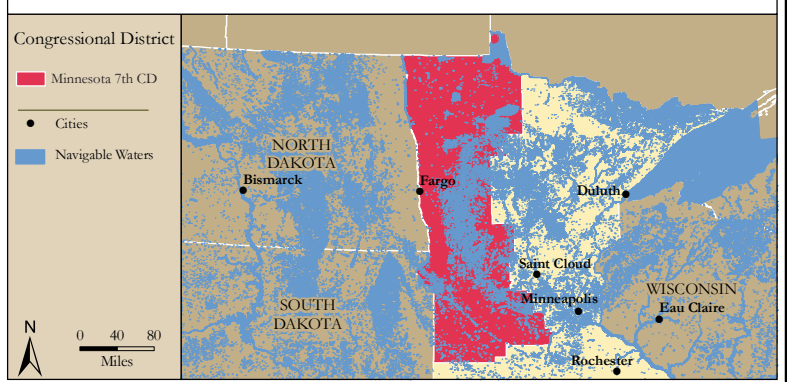


Figure 3. Number of Registered Boats by Zipcode within the Minnesota 7th Congressional District

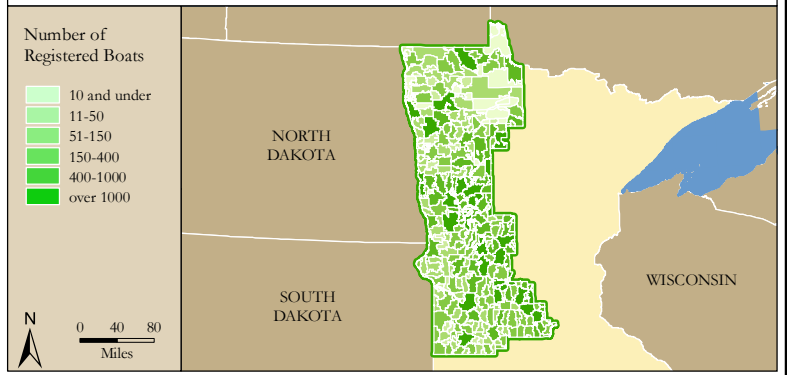
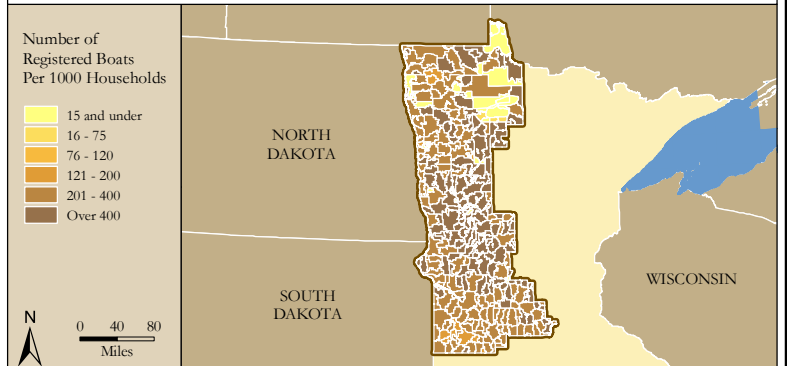


Figure 4. Per Capita (Household) Ownership of Registered Boats by Zipcode within the Minnesota 7th Congressional District



Economic Significance of Boating

Table 1. Craft and Trip Expenses by Power and Sailboats Registered in the Minnesota 7th Congressional District

Category	Boat Type and Size								Total
	Power <15'	Power 16' - 24'	Power 25' - 39'	Power 40'+	Sail <15'	Sail 16' - 24'	Sail 25' - 39'	Sail 40+	
Number of boats (Thousands of boats)	36.6	62.9	0.9	0.0	1.0	0.7	0.1	0.0	102.1
Annual craft spending (\$ per boat per year)	\$457.9	\$1,655.6	\$7,464.6	\$25,299.0	\$488.7	\$1,830.2	\$7,439.8	\$18,328.8	
Total craft spending (\$ Millions)	\$16.8	\$104.1	\$6.9	\$0.8	\$0.5	\$1.3	\$0.6	\$0.1	\$131.0
Total boat days (Thousands of days)	595.6	1,574.3	28.2	1.4	18.6	13.2	2.7	0.1	2,234.2
Total trip spending (\$ per boat per year)	\$935.9	\$2,148.4	\$4,574.4	\$8,039.6	\$1,009.7	\$1,009.7	\$1,963.9	\$5,204.7	
Total trip spending (\$ Millions)	\$34.2	\$135.1	\$4.2	\$0.3	\$1.0	\$0.7	\$0.2	\$0.0	\$175.6
Total craft & trip spending (\$ Millions)	\$51.0	\$239.2	\$11.1	\$1.1	\$1.4	\$1.9	\$0.8	\$0.1	\$306.6

Table 2. Total Spending on Boat Trips by Power and Sailboat Owners Registered in the Minnesota 7th CD

Category	Total (\$ Millions)	Percentage
Lodging	\$7.7	4%
Marina services	\$13.1	7%
Restaurant	\$31.3	18%
Groceries	\$32.6	19%
Boat fuel	\$38.8	22%
Auto fuel	\$34.8	20%
Repair & Maintenance	-	-
Marine supplies	-	-
Recreation & Entertainment	\$7.5	4%
Shopping	\$5.4	3%
Other services	-	-
Other goods	\$4.5	3%
Total	\$175.6	100%

Table 3. Total Annual Craft Spending (not including purchases of boats) by Power and Sailboat Owners Registered in the Minnesota 7th CD

Category	Total (\$ Millions)	Percentage
Slip	\$16.3	12%
Loan Payments	\$41.0	31%
Replacement Motors	\$2.1	2%
Replacement Trailers	\$0.5	0%
Insurance	\$12.5	10%
Repairs	\$26.2	20%
Accessories	\$26.6	20%
Taxes	\$5.7	4%
Total	\$131.0	100%

Table 4. Economic Significance of Trip Spending and Annual Craft Spending by Power and Sailboats Registered in the Minnesota 7th CD

	Trip Spending	Annual Craft Spending	Total
Direct Effects			
Sales (\$ Millions)	\$147.0	\$82.4	\$229.4
Jobs	1,533.9	943.2	2,477.1
Labor Income (\$ Millions)	\$44.3	\$32.0	\$76.3
Value Added (\$ Millions)	\$71.0	\$53.4	\$124.4
Total Effects			
Sales (\$ Millions)	\$395.0	\$208.8	\$603.9
Jobs	3,264.1	1,874.3	5,138.3
Labor Income (\$ Millions)	\$121.1	\$73.8	\$194.9
Value Added (\$ Millions)	\$204.4	\$123.0	\$327.5

Table 5. Economic Significance of Power and Sailboats Registered in the Minnesota 7th CD

Sector/Spending category	Sales (\$ Millions)	Jobs	Labor Income (\$Millions)	Value Added (\$Millions)
Direct Effects				
Lodging	\$7.7	96.1	\$3.1	\$5.5
Marina Services	\$29.4	377.3	\$10.3	\$18.5
Restaurant	\$31.3	620.8	\$10.7	\$15.0
Recreation & Entertainment	\$7.5	95.9	\$2.6	\$4.7
Repair & Maintenance	\$26.2	327.2	\$9.7	\$13.6
Insurance & Credit	\$15.1	110.0	\$6.5	\$13.9
Gas Service	\$16.4	194.9	\$7.9	\$12.5
Other Retail Trade	\$22.9	427.2	\$11.1	\$18.0
Wholesale Trade	\$15.4	98.7	\$6.6	\$11.7
Other Local Production of Goods	\$57.4	129.0	\$7.8	\$11.1
Total Direct Effects	\$229.4	2,477.1	\$76.3	\$124.4
Secondary Effects	\$374.5	2,661.2	\$118.6	\$203.0
Total Effects	\$603.9	5,138.3	\$194.9	\$327.5

The Minnesota 8th Congressional District

Table 1. The Minnesota 8th Congressional District Description

Area (square miles)	27,583
Navigable Waterbody (square miles)	8,916
Total Population (2007)	649,578
Population Density (per square mile) (2007)	22
Persons 18+ (2007)	512,825
Number of Households (2007)	271,082

Table 2. Registered Boats Owned by Residents Residing in the Minnesota 8th Congressional District

	8th CD	State Total
Number of Registered Boats	159,499	688,292
Type of Registered Boats		
Power Boats	150,973	626,255
Outboards	137,622	536,893
Inboards	1,929	13,329
Stern Drives	11,011	73,175
Jet Boats	411	2,858
Personal Watercraft	6,102	45,108
Sailboats	2,424	16,929

Size of Registered Boats		
≤ 15'	67,620	272,023
16'-24'	89,317	398,946
25'-39'	2,386	15,781
40' +	176	1,542

Per Capita Ownership of Registered Boats		
All Population	246/1000	133/1000
Persons 18 +	311/1000	182/1000
Households	588/1000	334/1000

Table 3. Boating-related Businesses Based on NAICS Codes

Category	8th CD	State Total
Boat Building		
No. of Businesses	6	26
No. of Employees	1,231	1,693
Total Sales (\$ Millions)	\$114.9	\$197.8
Motors & Engines Mfg.		
No. of Businesses	-	1
No. of Employees	-	1
Total Sales (\$ Millions)	-	\$0.1
Accessories & Supplies Mfg.		
No. of Businesses	9	26
No. of Employees	95	307
Total Sales (\$ Millions)	\$9.5	\$75.8
Dealers & Wholesalers		
No. of Businesses	79	230
No. of Employees	433	1,464
Total Sales (\$ Millions)	\$82.4	\$311.4
Boating Services		
No. of Businesses	45	127
No. of Employees	142	536
Total Sales (\$ Millions)	\$8.0	\$37.7

Figure 1. Location of the Minnesota 8th Congressional District

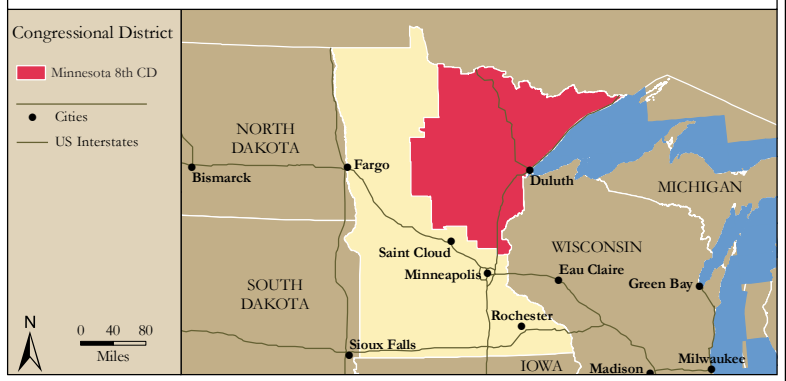


Figure 2. Navigable Waters of the Minnesota 8th Congressional District

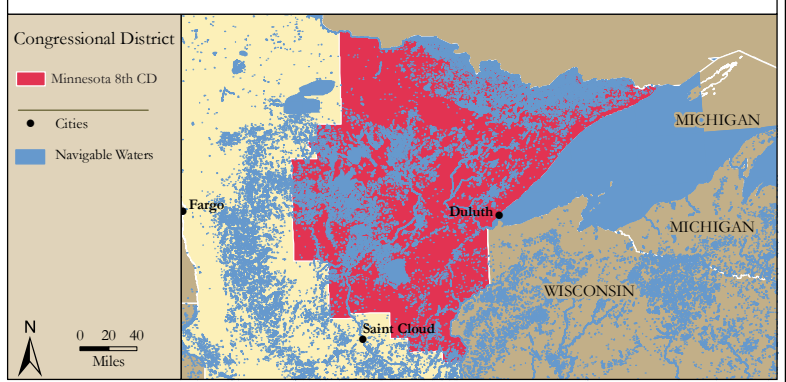


Figure 3. Number of Registered Boats by Zipcode within the Minnesota 8th Congressional District

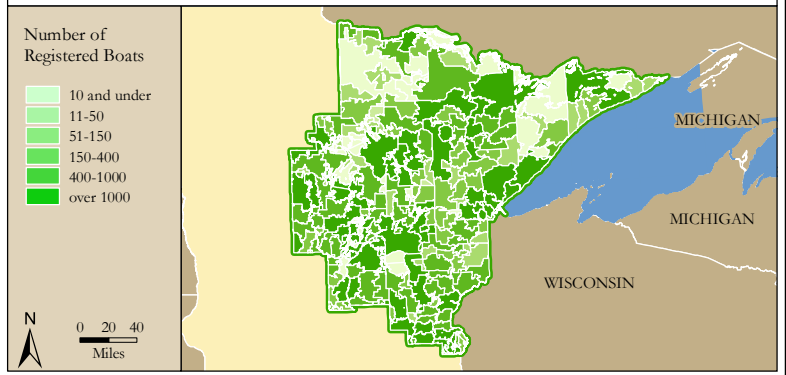
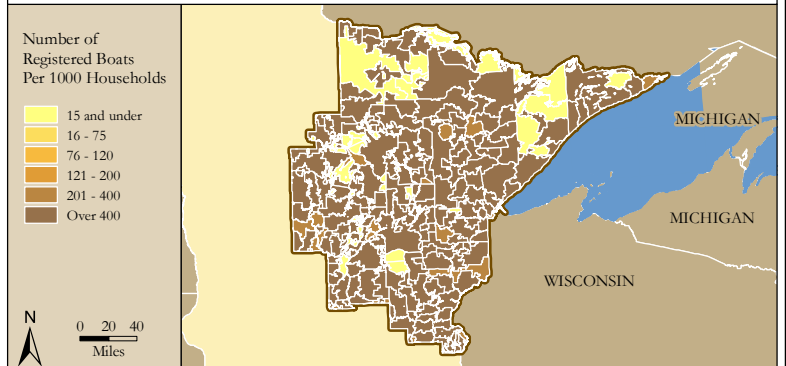


Figure 4. Per Capita (Household) Ownership of Registered Boats by Zipcode within the Minnesota 8th Congressional District



Economic Significance of Boating

Table 1. Craft and Trip Expenses by Power and Sailboats Registered in the Minnesota 8th Congressional District

Category	Boat Type and Size								Total
	Power <15'	Power 16' - 24'	Power 25' - 39'	Power 40'+	Sail <15'	Sail 16' - 24'	Sail 25' - 39'	Sail 40+	
Number of boats (Thousands of boats)	60.3	88.4	2.1	0.2	1.2	0.9	0.3	0.0	153.4
Annual craft spending (\$ per boat per year)	\$457.9	\$1,655.6	\$7,464.6	\$25,299.0	\$488.7	\$1,830.2	\$7,439.8	\$18,328.8	
Total craft spending (\$ Millions)	\$27.6	\$146.4	\$15.9	\$3.8	\$0.6	\$1.7	\$1.9	\$0.4	\$198.3
Total boat days (Thousands of days)	981.7	2,213.5	65.2	6.6	23.6	17.7	8.2	1.1	3,317.6
Total trip spending (\$ per boat per year)	\$935.9	\$2,148.4	\$4,574.4	\$8,039.6	\$1,009.7	\$1,009.7	\$1,963.9	\$5,204.7	
Total trip spending (\$ Millions)	\$56.4	\$189.9	\$9.7	\$1.2	\$1.2	\$0.9	\$0.5	\$0.1	\$260.1
Total craft & trip spending (\$ Millions)	\$84.0	\$336.3	\$25.6	\$5.1	\$1.8	\$2.6	\$2.5	\$0.6	\$458.4

Table 2. Total Spending on Boat Trips by Power and Sailboat Owners Registered in the Minnesota 8th CD

Category	Total (\$ Millions)	Percentage
Lodging	\$11.2	4%
Marina services	\$19.8	8%
Restaurant	\$46.6	18%
Groceries	\$47.9	18%
Boat fuel	\$57.8	22%
Auto fuel	\$51.0	20%
Repair & Maintenance	-	-
Marine supplies	-	-
Recreation & Entertainment	\$11.1	4%
Shopping	\$8.1	3%
Other services	-	-
Other goods	\$6.7	3%
Total	\$260.1	100%

Table 3. Total Annual Craft Spending (not including purchases of boats) by Power and Sailboat Owners Registered in the Minnesota 8th CD

Category	Total (\$ Millions)	Percentage
Slip	\$25.2	13%
Loan Payments	\$62.0	31%
Replacement Motors	\$3.1	2%
Replacement Trailers	\$0.7	0%
Insurance	\$18.8	9%
Repairs	\$39.7	20%
Accessories	\$40.2	20%
Taxes	\$8.6	4%
Total	\$198.3	100%

Table 4. Economic Significance of Trip Spending and Annual Craft Spending by Power and Sailboats Registered in the Minnesota 8th CD

	Trip Spending	Annual Craft Spending	Total
Direct Effects			
Sales (\$ Millions)	\$218.0	\$125.1	\$343.1
Jobs	2,275.9	1,432.8	3,708.7
Labor Income (\$ Millions)	\$65.7	\$48.5	\$114.2
Value Added (\$ Millions)	\$105.3	\$81.0	\$186.3
Total Effects			
Sales (\$ Millions)	\$585.8	\$316.9	\$902.8
Jobs	4,841.1	2,846.3	7,687.4
Labor Income (\$ Millions)	\$179.6	\$112.0	\$291.6
Value Added (\$ Millions)	\$303.1	\$186.7	\$489.8

Table 5. Economic Significance of Power and Sailboats Registered in the Minnesota 8th CD

Sector/Spending category	Sales (\$ Millions)	Jobs	Labor Income (\$Millions)	Value Added (\$Millions)
Direct Effects				
Lodging	\$11.2	139.1	\$4.5	\$7.9
Marina Services	\$45.0	578.0	\$15.7	\$28.3
Restaurant	\$46.6	922.1	\$15.8	\$22.3
Recreation & Entertainment	\$11.1	143.0	\$3.9	\$7.0
Repair & Maintenance	\$39.7	496.3	\$14.7	\$20.7
Insurance & Credit	\$22.8	165.8	\$9.8	\$20.9
Gas Service	\$24.3	288.2	\$11.6	\$18.4
Other Retail Trade	\$34.2	637.7	\$16.6	\$26.8
Wholesale Trade	\$22.9	146.7	\$9.8	\$17.4
Other Local Production of Goods	\$85.3	191.7	\$11.7	\$16.5
Total Direct Effects	\$343.1	3,708.7	\$114.2	\$186.3
Secondary Effects	\$559.7	3,978.7	\$177.3	\$303.5
Total Effects	\$902.8	7,687.4	\$291.6	\$489.8